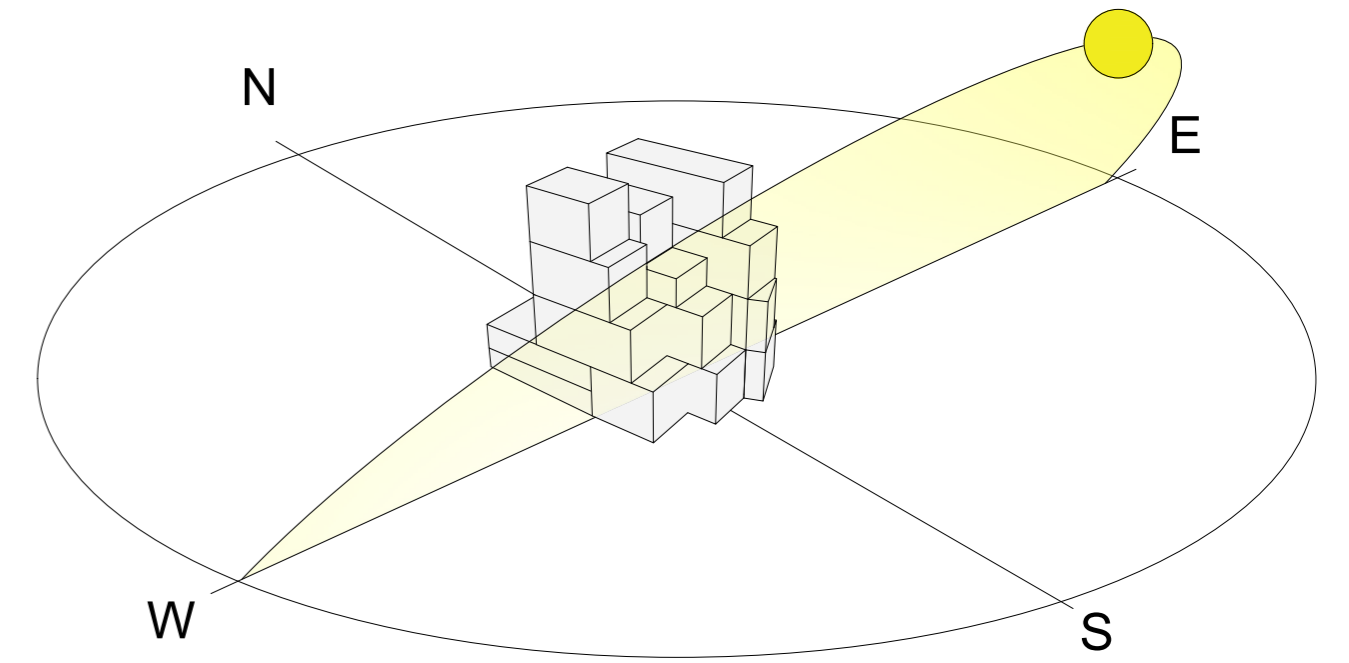
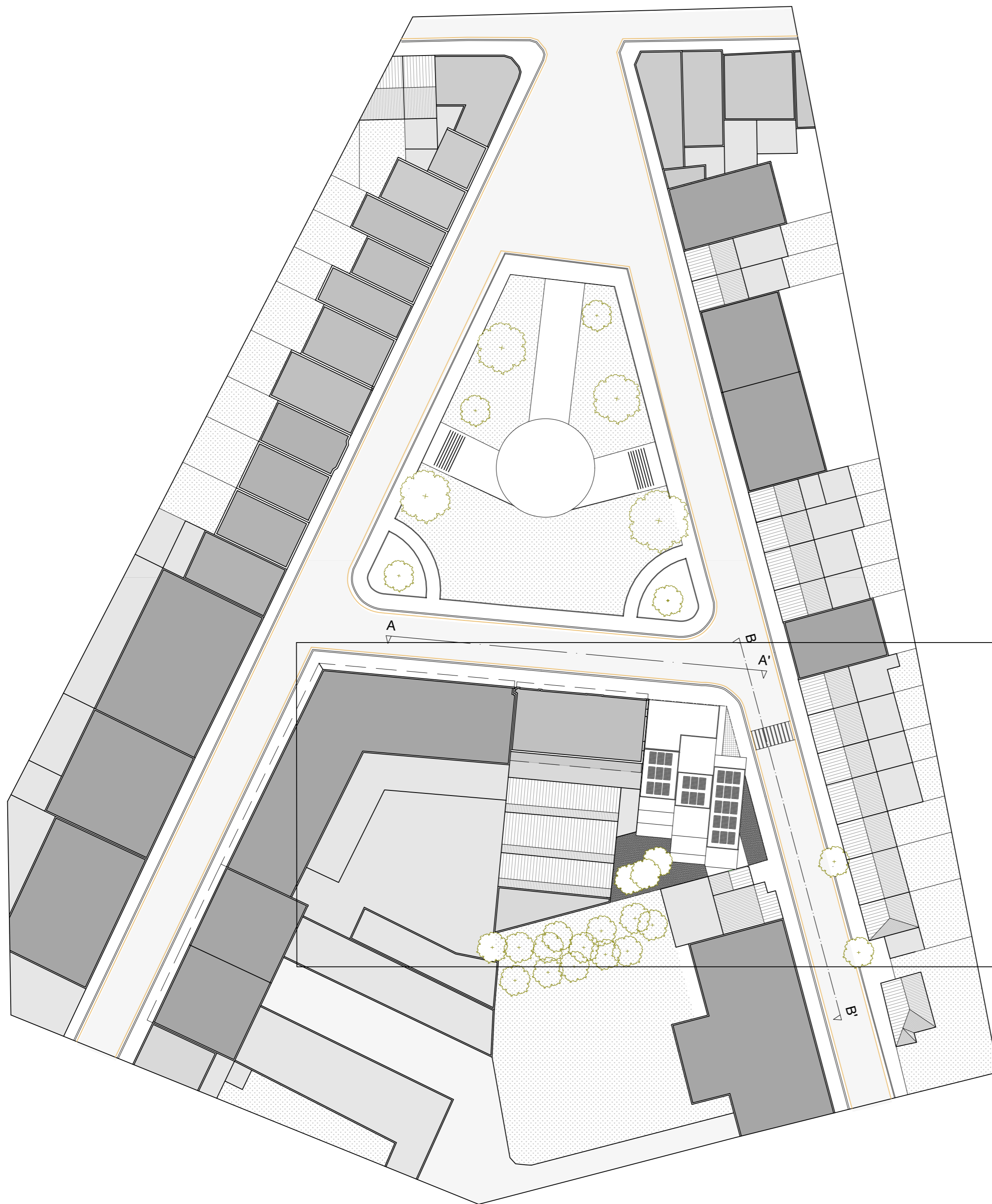


MODULHOUSES

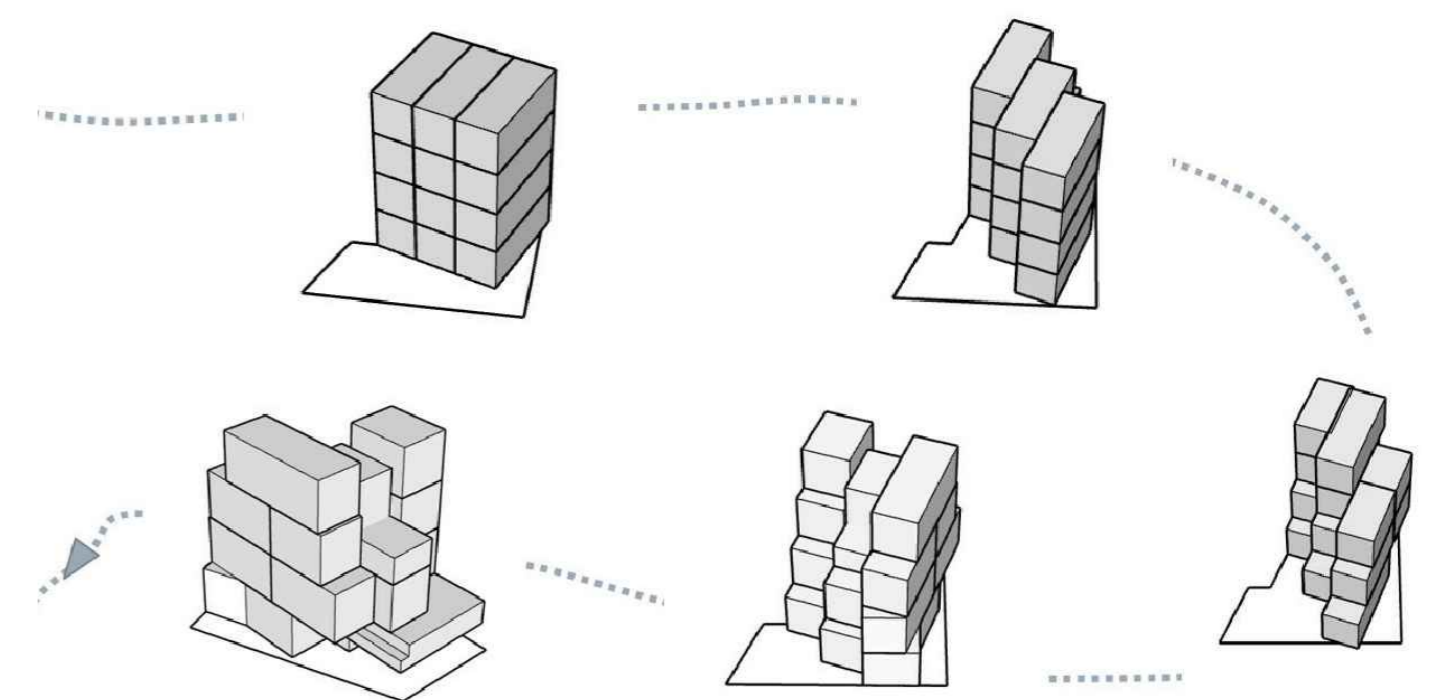
PLACE MATTEOTI



RUE LEOPOLD DUPUIS



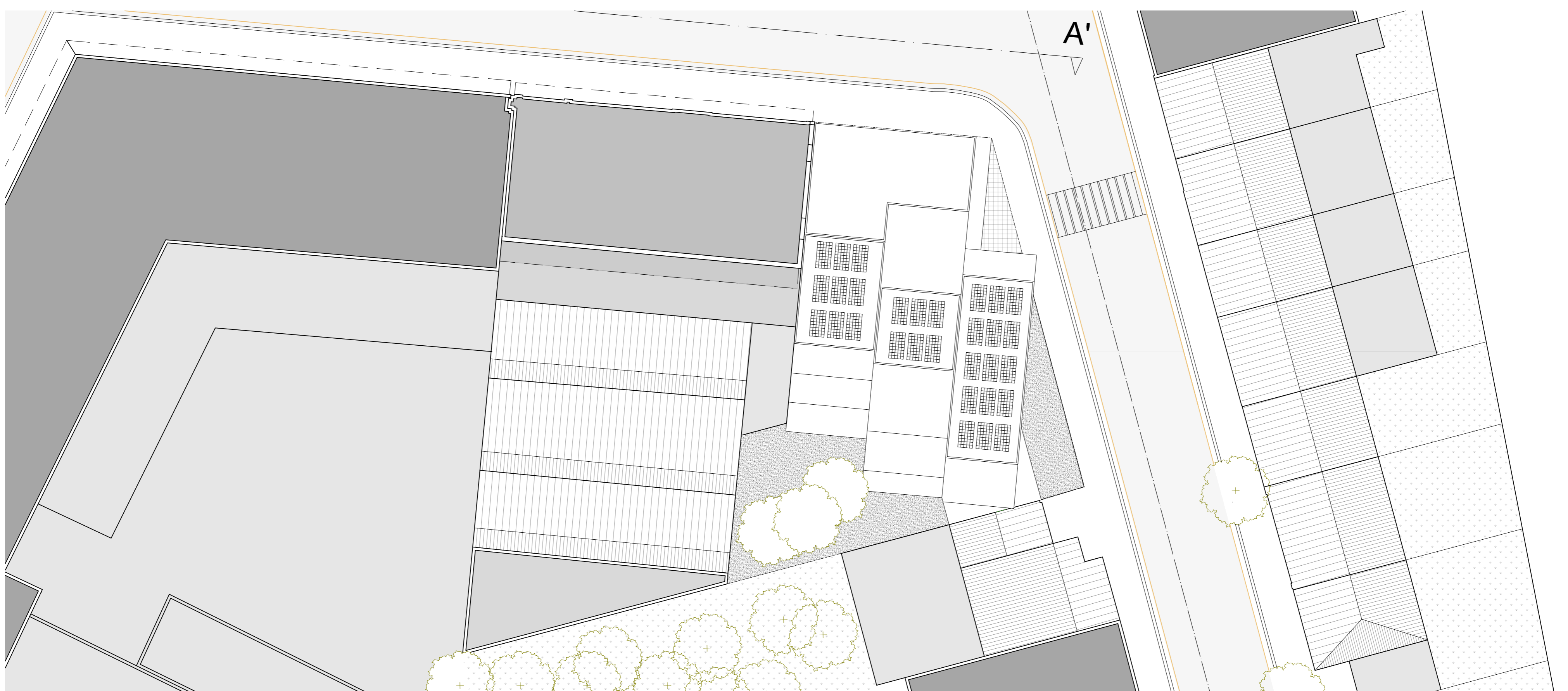
ENSOLEILLEMENT



FORME

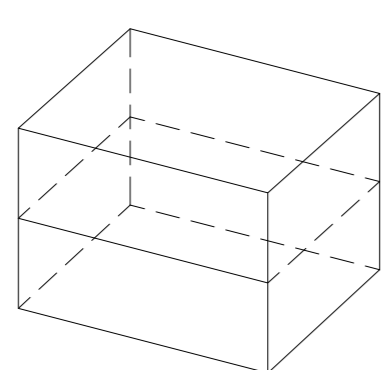
PLAN D'IMPLANTATION

1/500

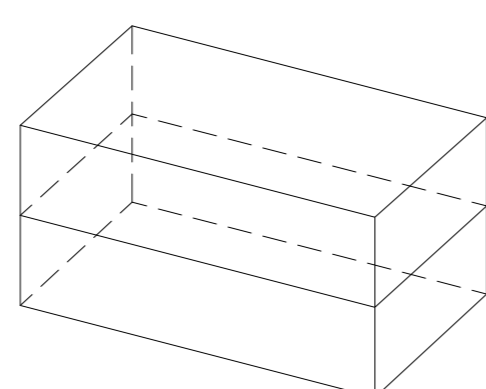


PLAN D'IMPLANTATION

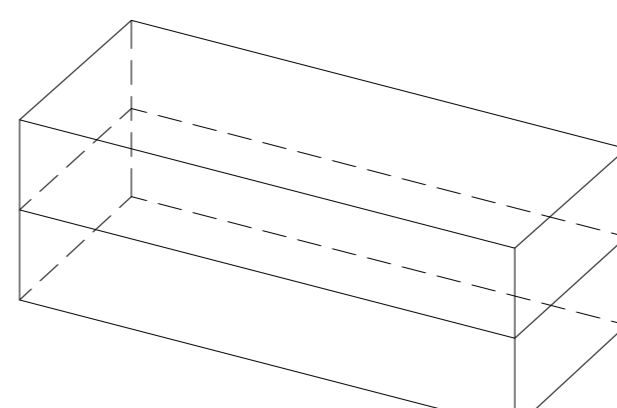
1/200



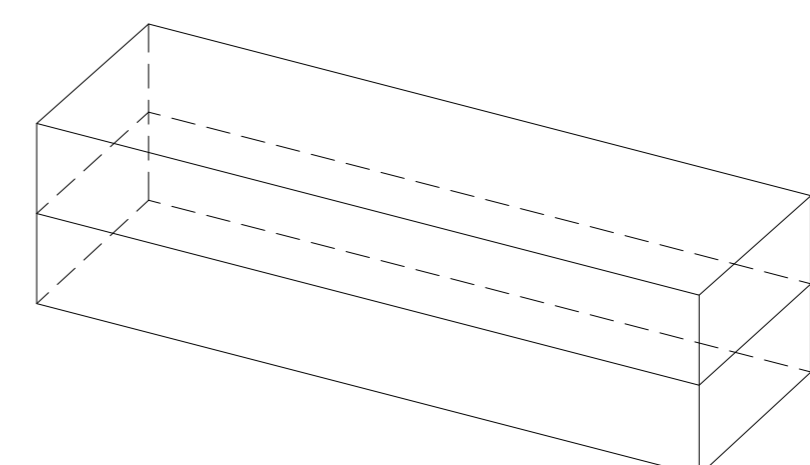
80 m²



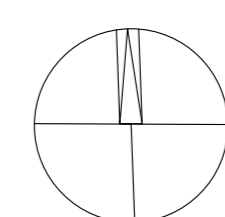
100 m²



120 m²

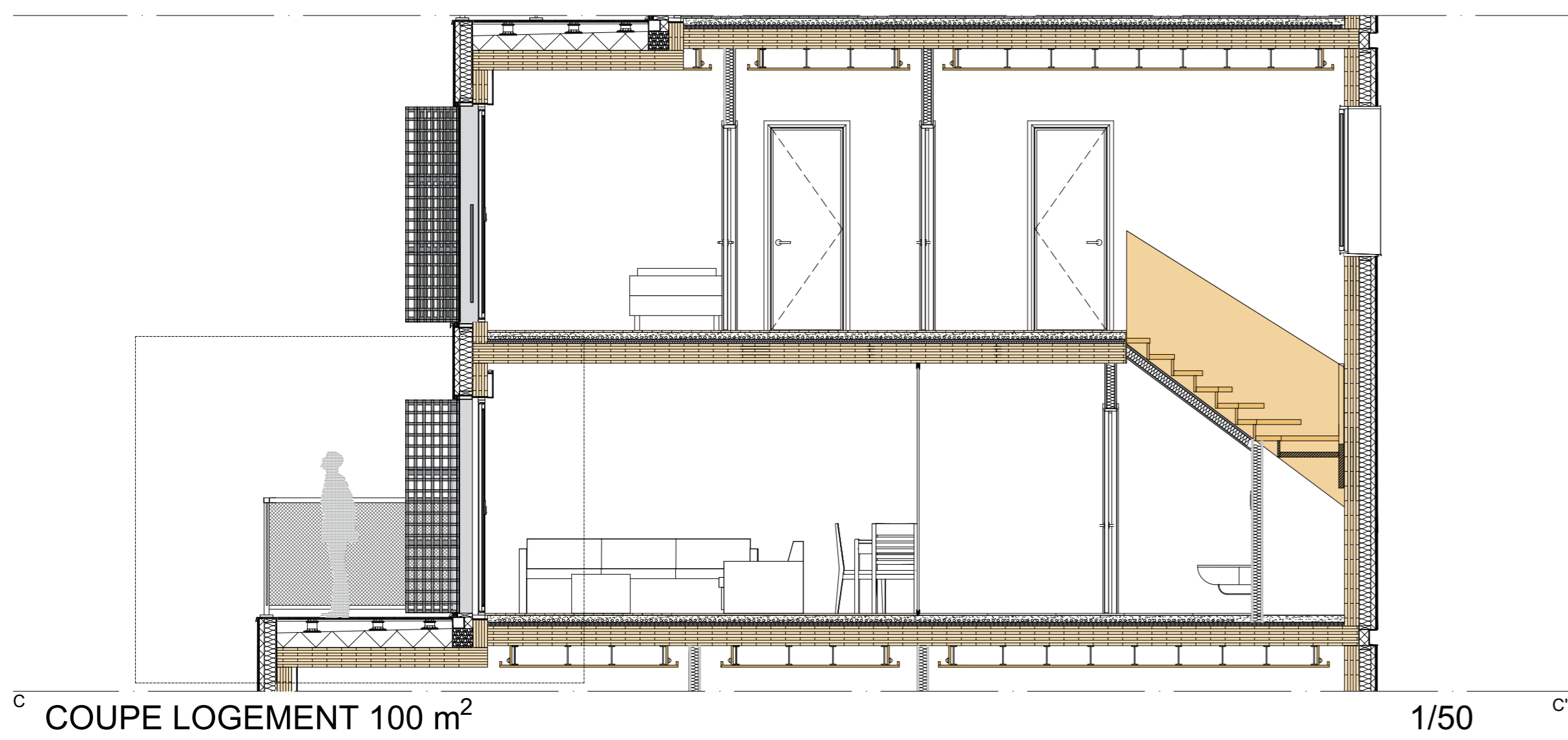
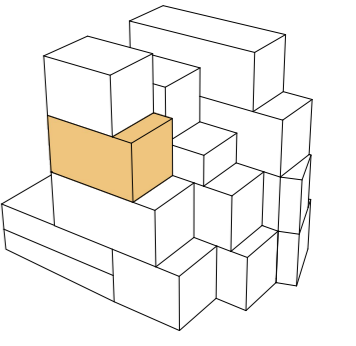


140 m²

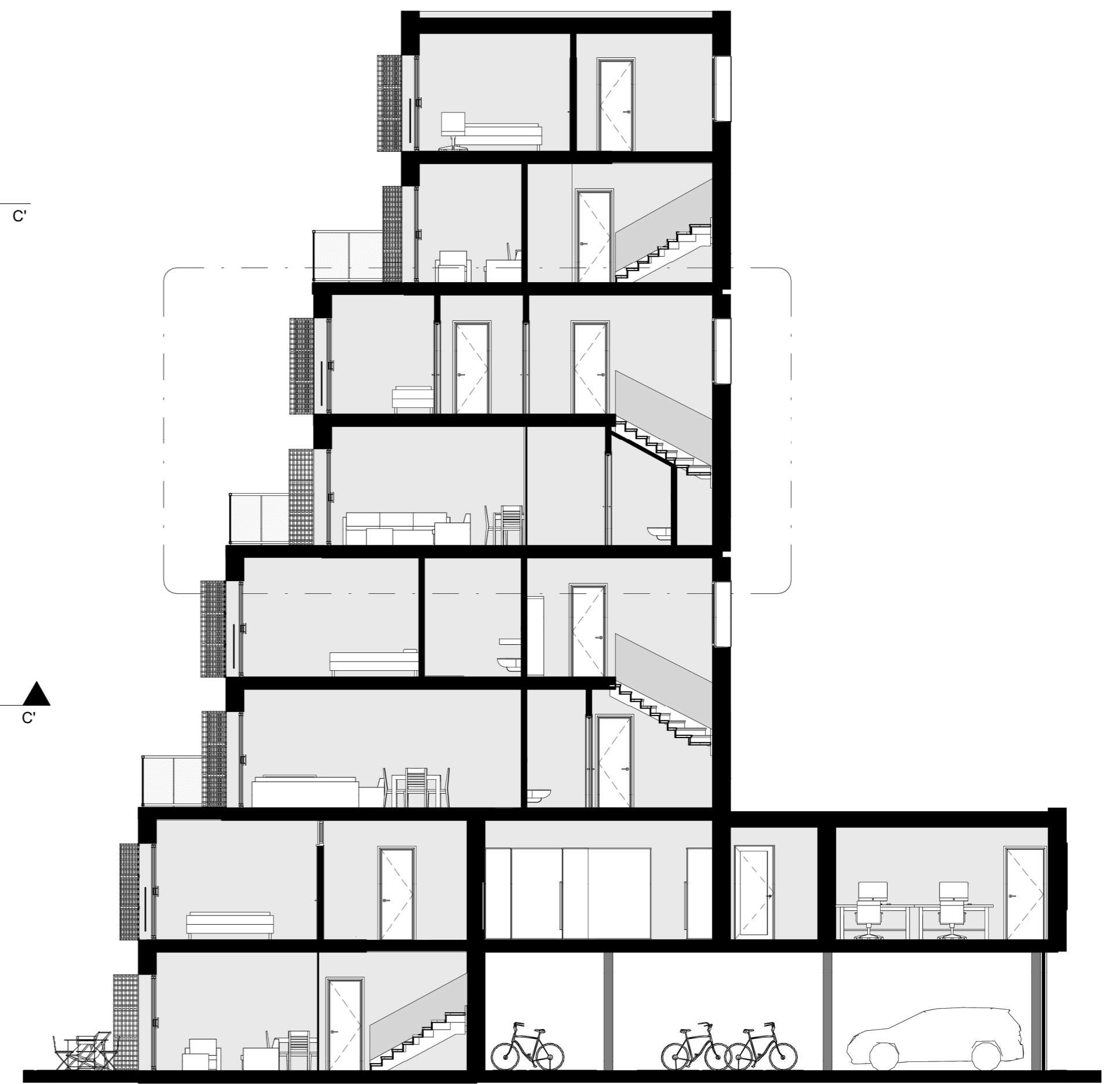


TECHNICITE

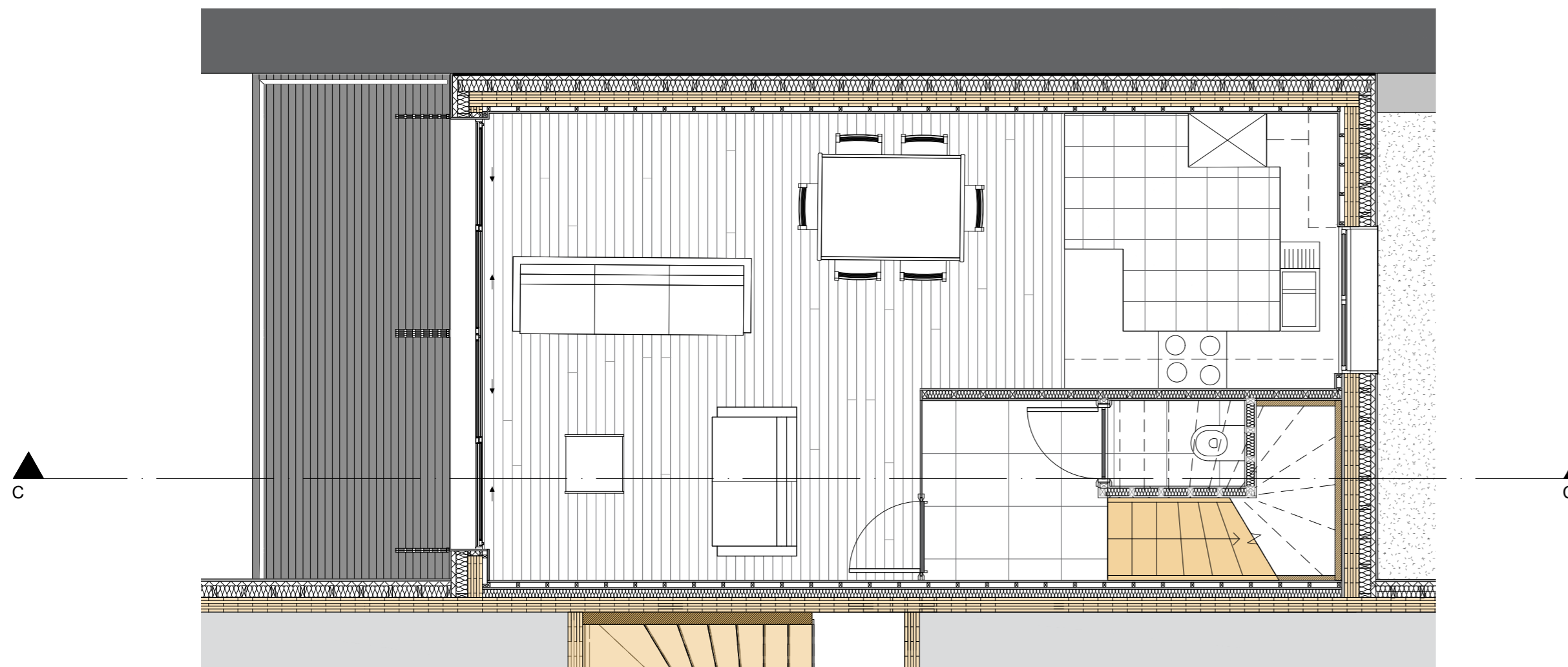
LOGEMENT 100 m²



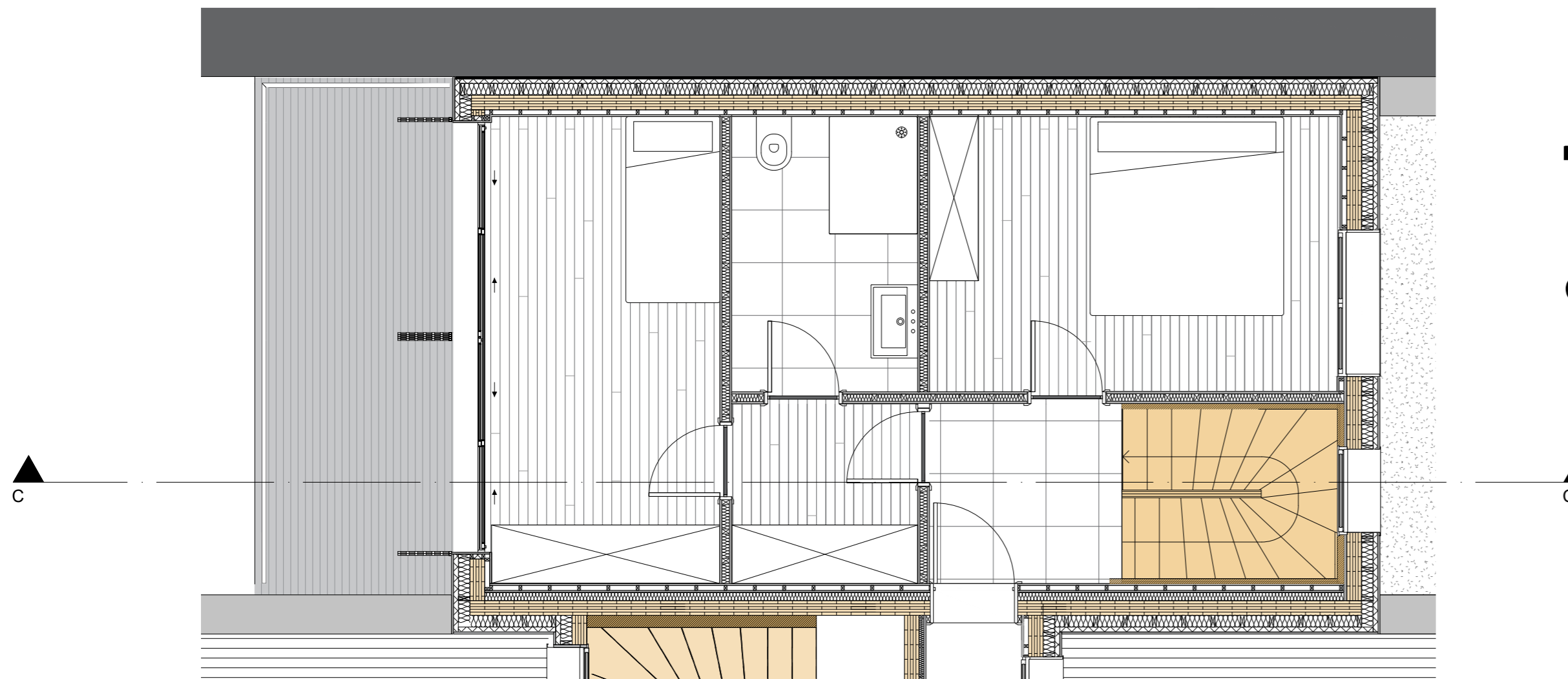
COUPE LOGEMENT 100 m² 1/50



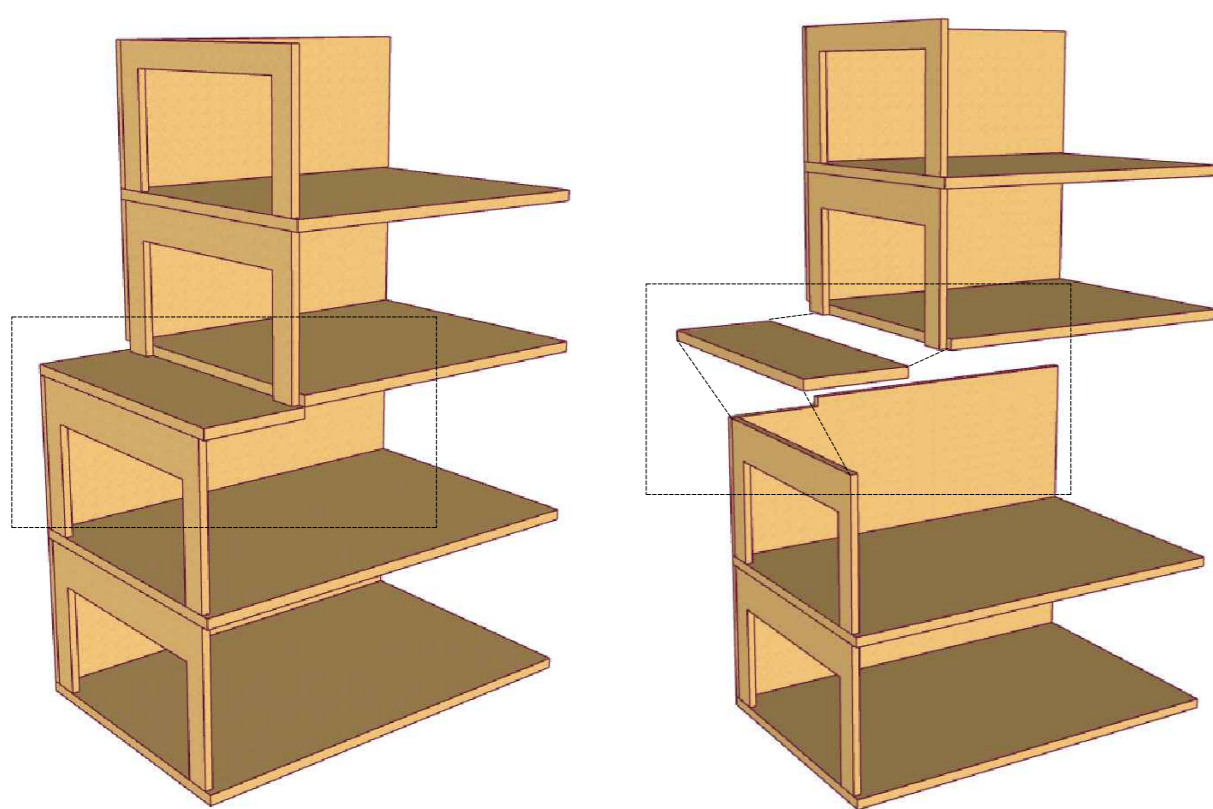
COUPE LONGITUDINALE 1/100



PLAN R+4 - NIV. 0 MODULE 1/50



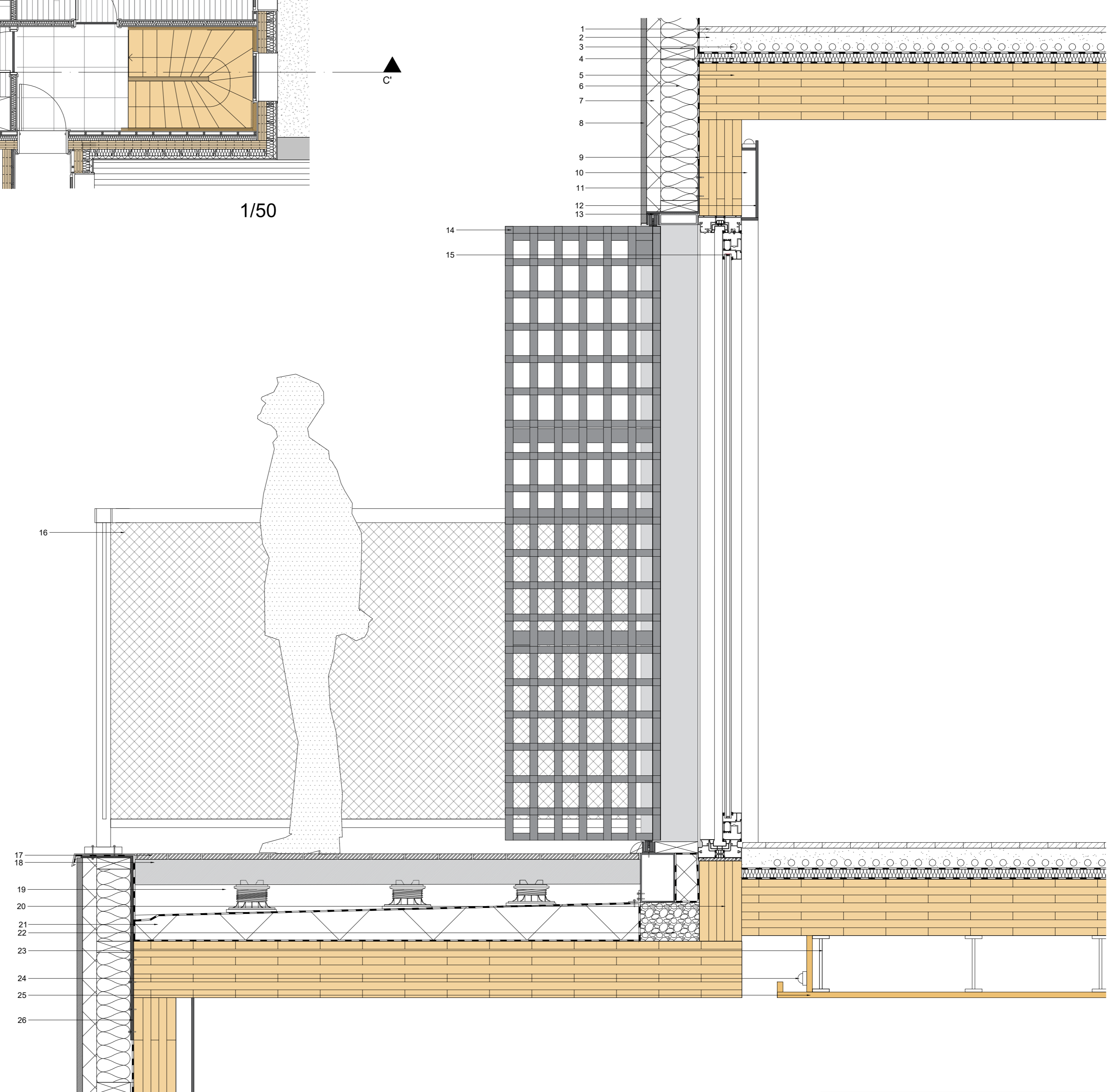
PLAN R+5 - NIV. 1 MODULE 1/50



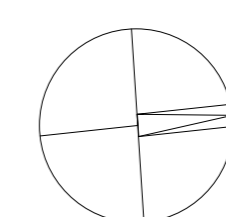
SCHEMA ASSEMBLAGE CLT

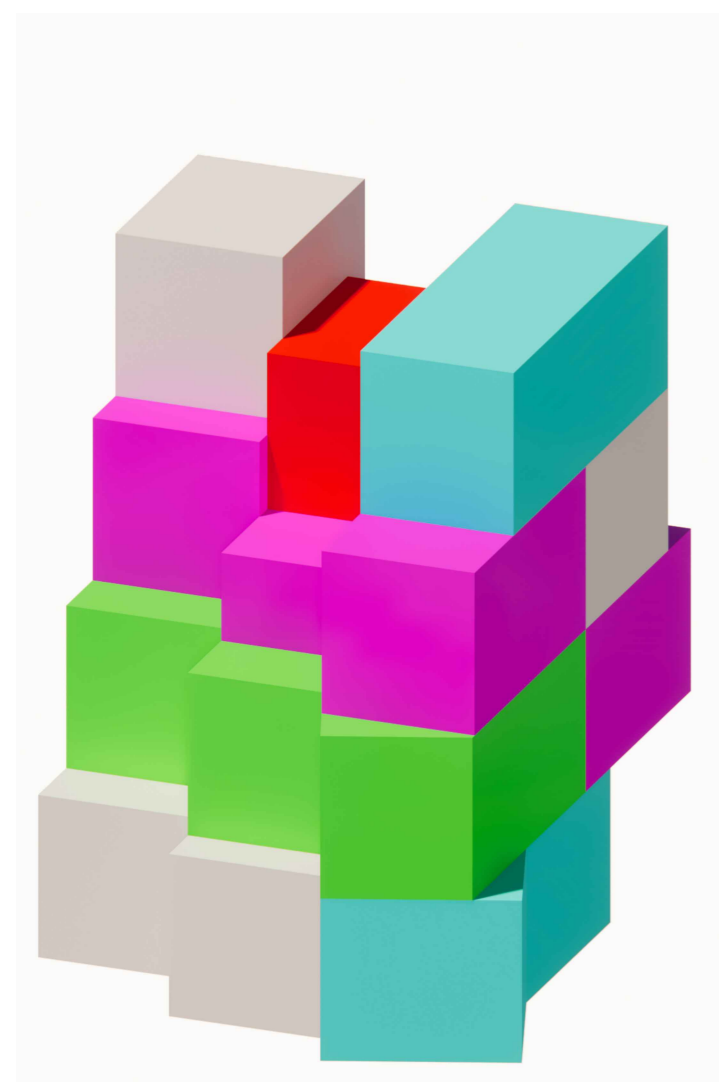
LEGENDE

- | | |
|---|---|
| 1. Plancher en chêne 20mm | 15. Chassis coulissant 2301 x 2120 mm |
| 2. Chappe technique | 16. Garde-corps grillagé blanc |
| 3. Serpentin chauffant | 17. Plancher terrasse type exotique 25 mm |
| 4. Isolation acoustique 30mm | 18. Lambourde 90mm |
| 5. Plancher CLT 200mm | 19. Plot d'ajusement |
| 6. Isolation souple laine de chanvre 120 mm | 20. Panneau CLT 150 mm |
| 7. Panneau fibre de bois Celit 3D 50 mm | 21. Isolation rigide liège 150-190 mm |
| 8. Enduit minérale | 22. Béton cellulaire |
| 9. Pare-vapeur | 23. Suspente acoustique |
| 10. Metal stud | 24. Eclairage type LED "blanc chaud" |
| 11. Console en acier | 25. Panneau faux plafond finition bois |
| 12. Plaque de plâtre + finition peinture 20mm | 26. Console |
| 13. Rail pour volets | |
| 14. Volet en bois déployable | |



DETAILS 1/10





- LEGENDE**
- 80 m²
 - 100 m²
 - 120 m²
 - 140 m²

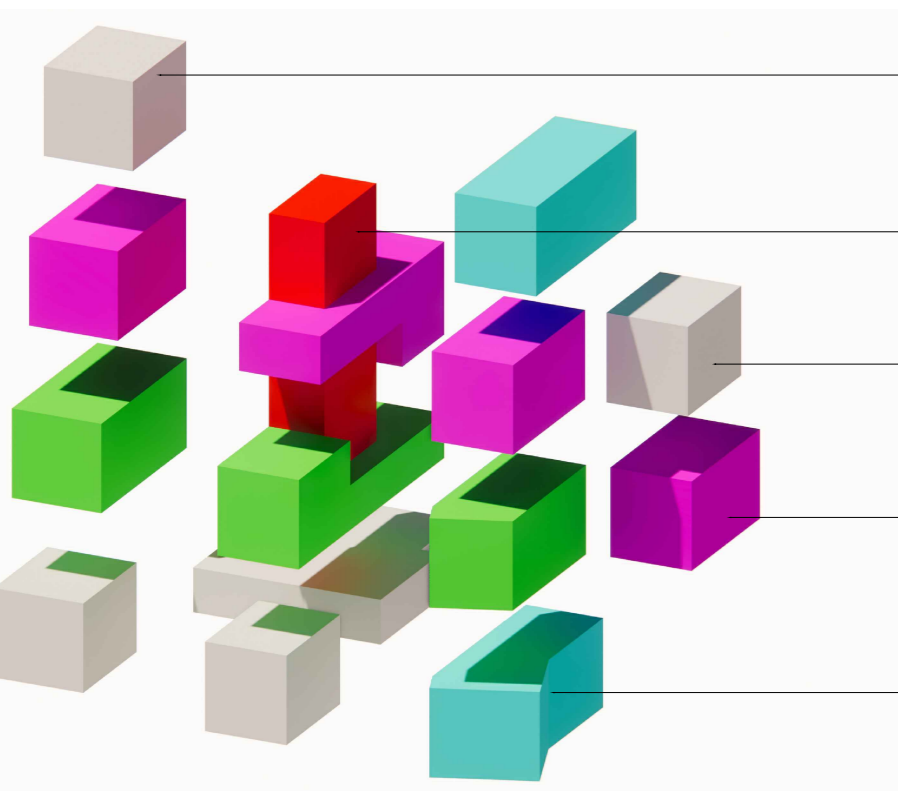
SCHEMA D'ASSEMBLAGE



B B' COUPE CONTEXTUELLE EST BB' 1/200

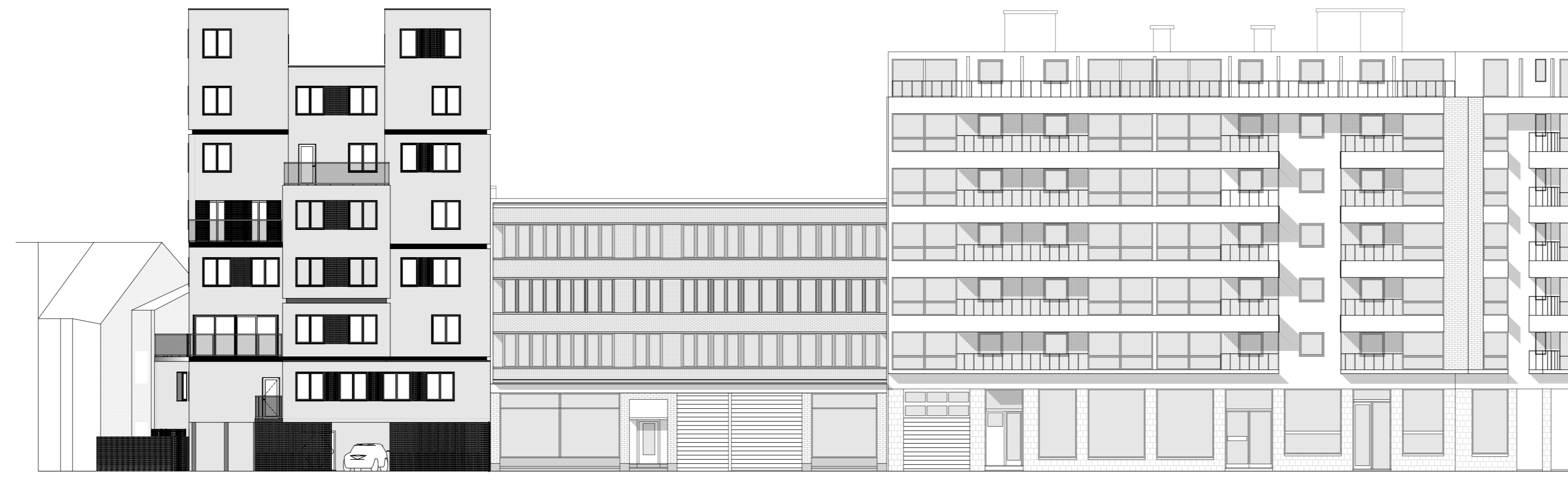


VUE FACADE SUD



SCHEMA ORGANISATIONNEL

- R+6 et R+7:**
Logements de 80m² et 140m²
- Circulation verticale**
Ascenseur et escalier
- R+4 et R+5**
3x logements de 100m²
1x logement de 80m²
- R+2 et R+3**
3x logements de 120m²
1x logement de 80m²
- RDC et R+1**
Parking vélos (26) et voitures (7)
Entrée commune
2x logements de 80m²
1x logement de 140m²
Bureau d'Architecture (R+1)



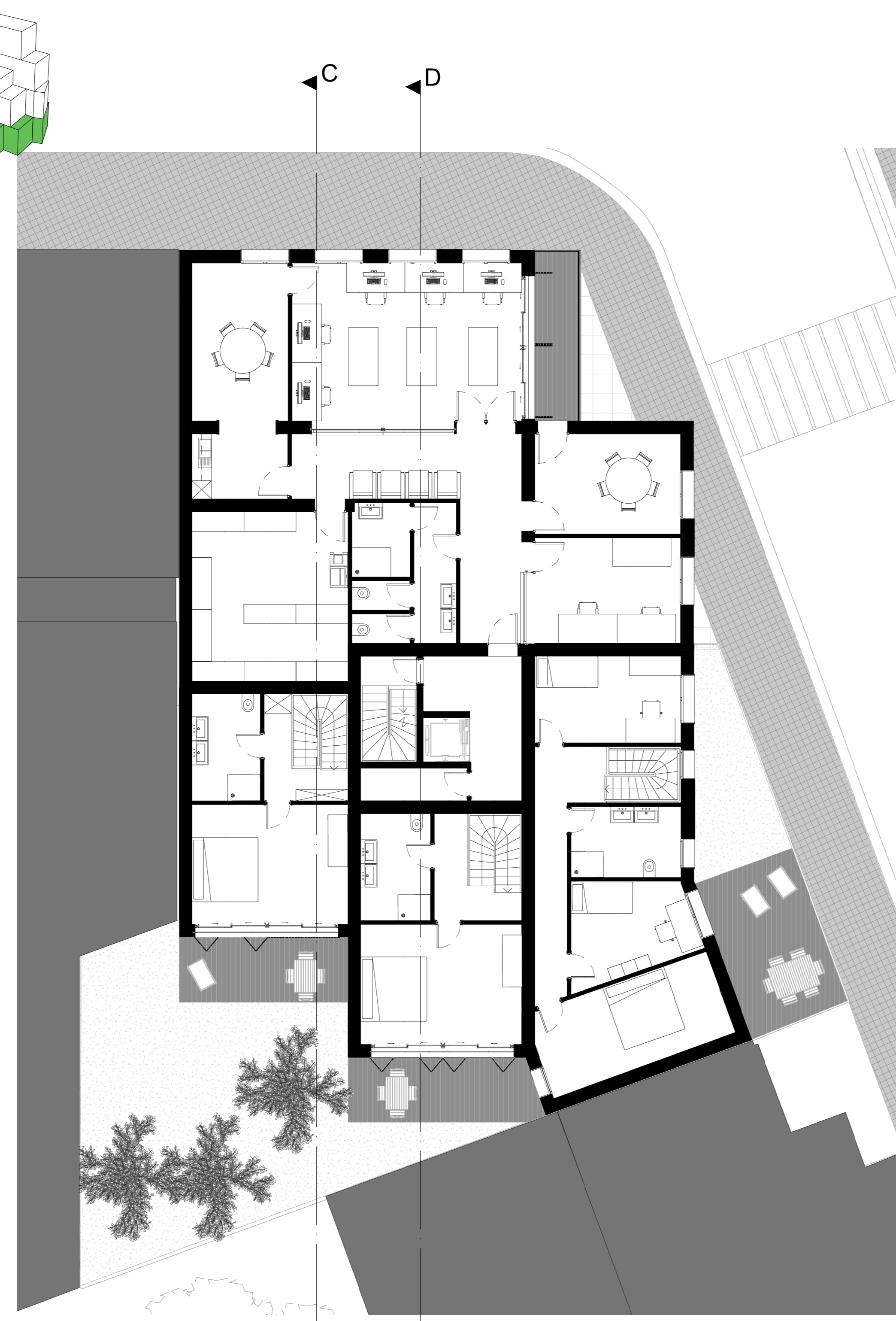
A A' COUPE CONTEXTUELLE NORD AA' 1/200



VUE FACADE EST



RDC 1/100



R+1 1/100



R+2 1/100

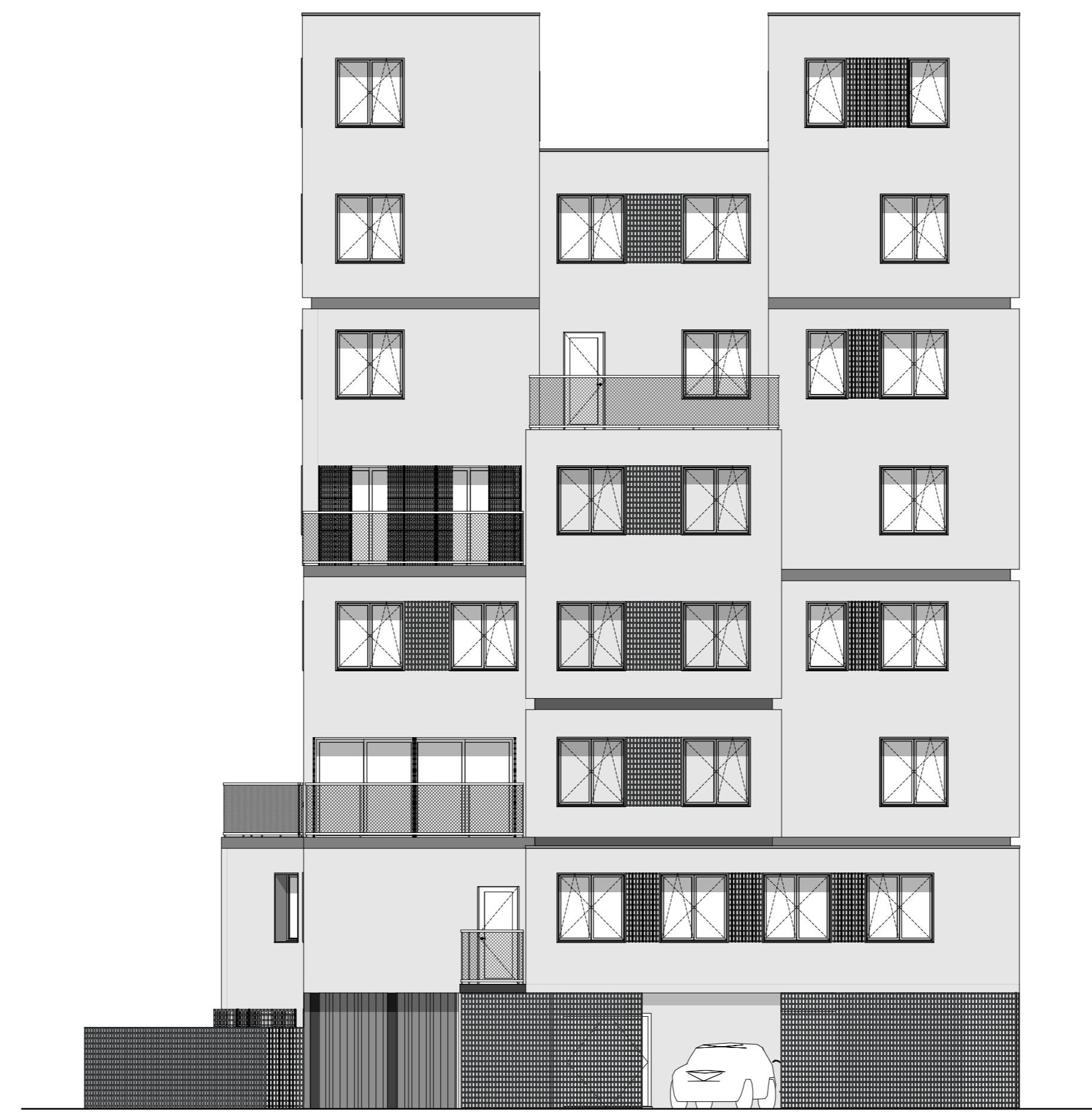


R+3 1/100



ELEVATION EST - RUE LEOPOLD DEPUIS

1/100



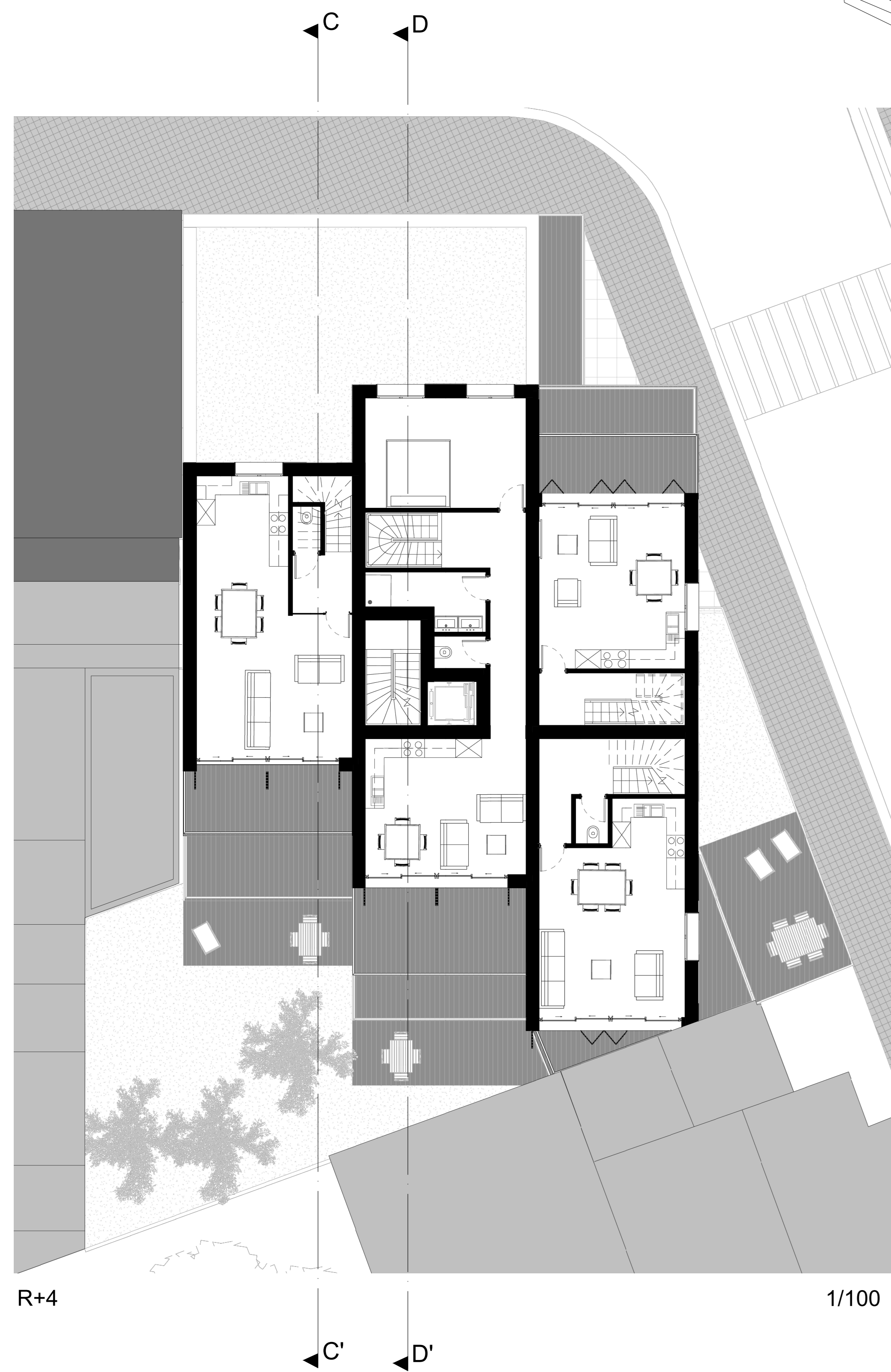
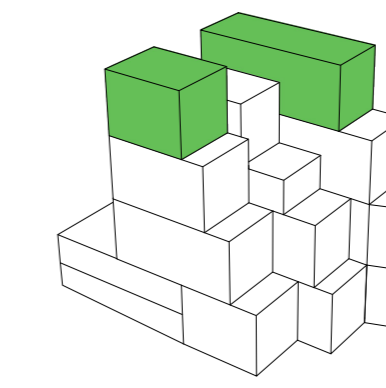
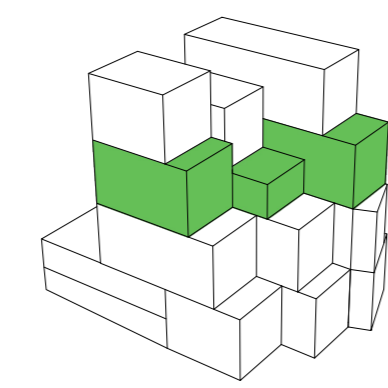
ELEVATION NORD - COTE PLACE MATTEOTI

1/100



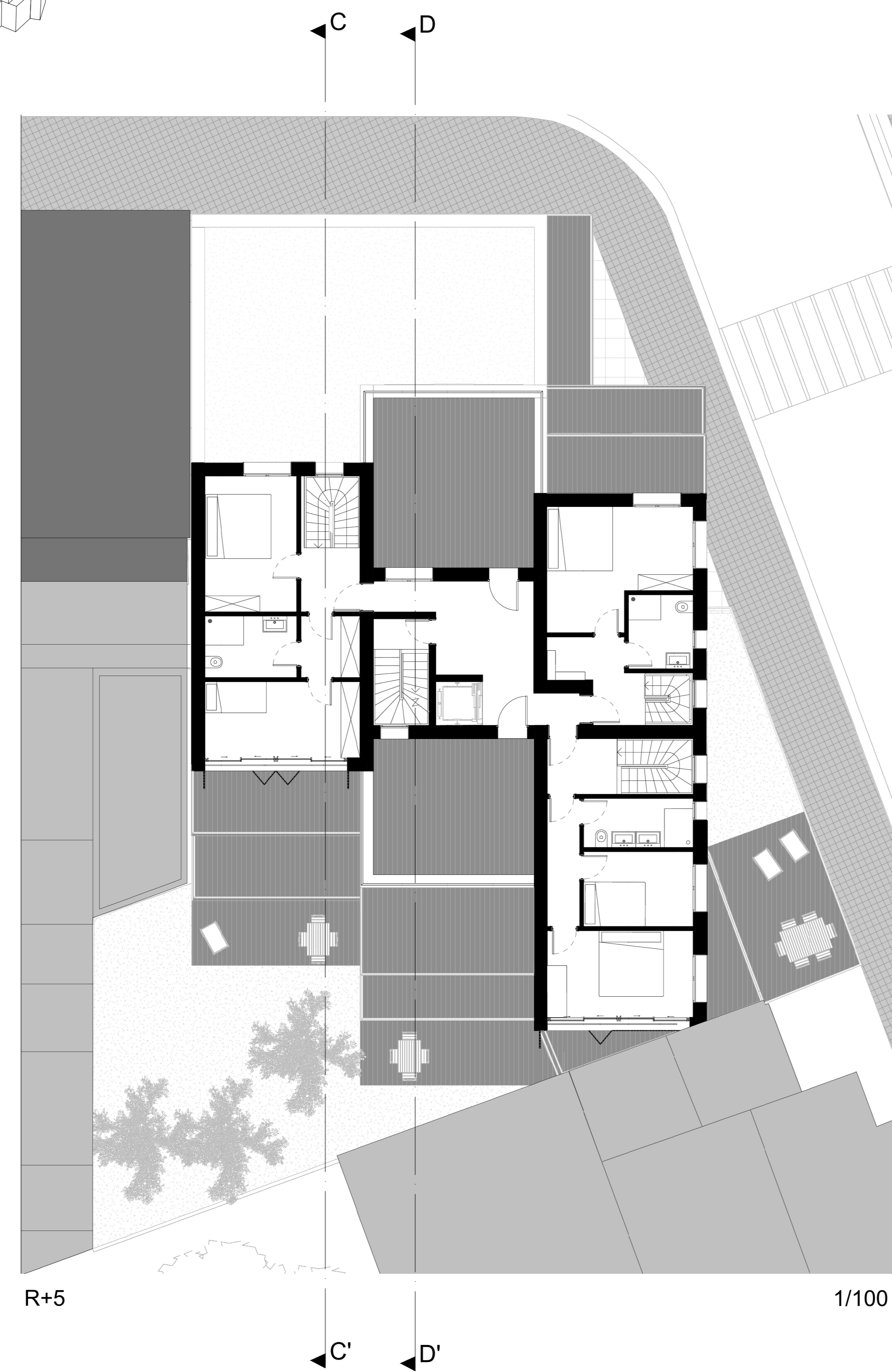
ELEVATION SUD

1/100



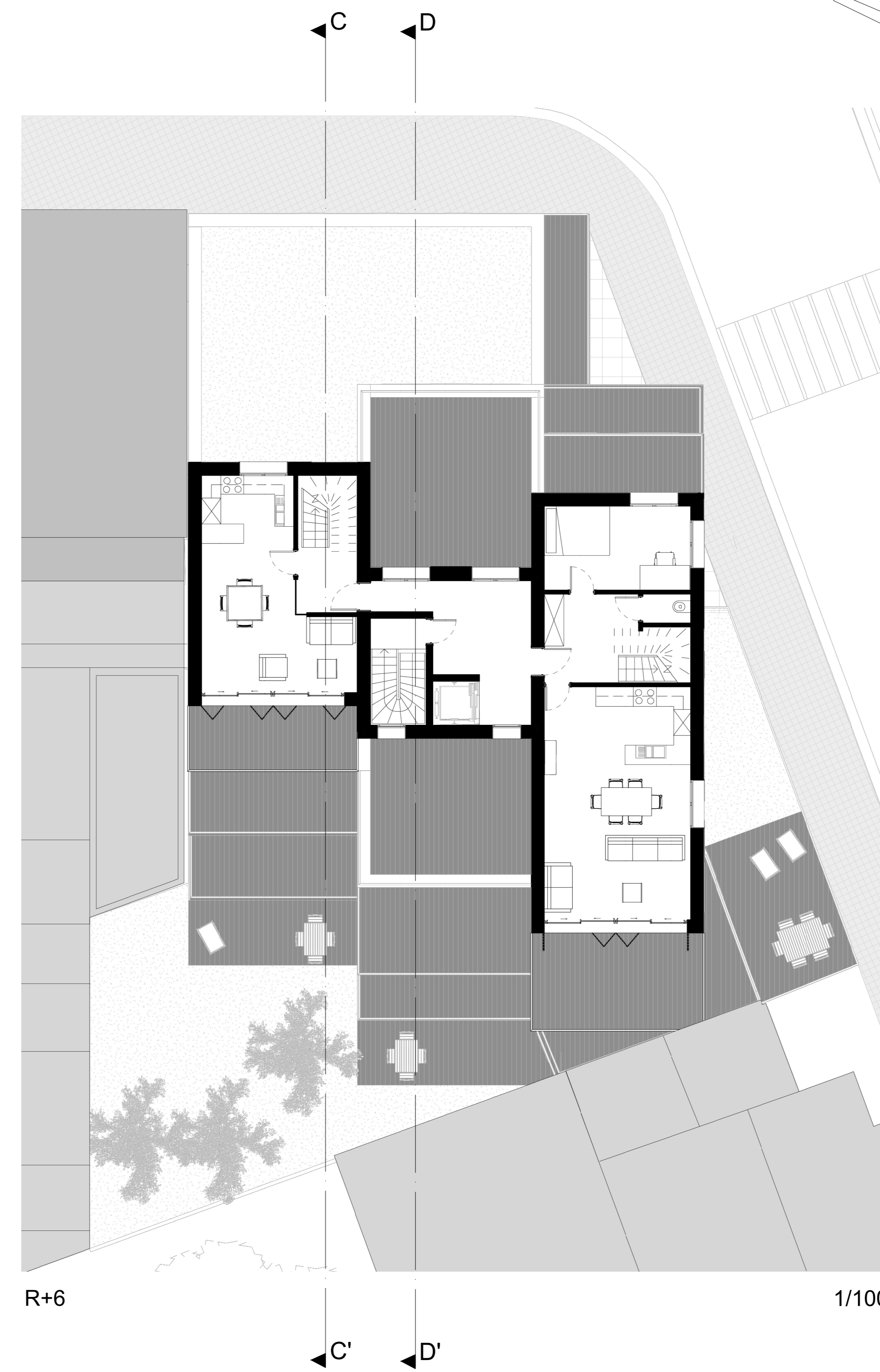
R+4

1/100



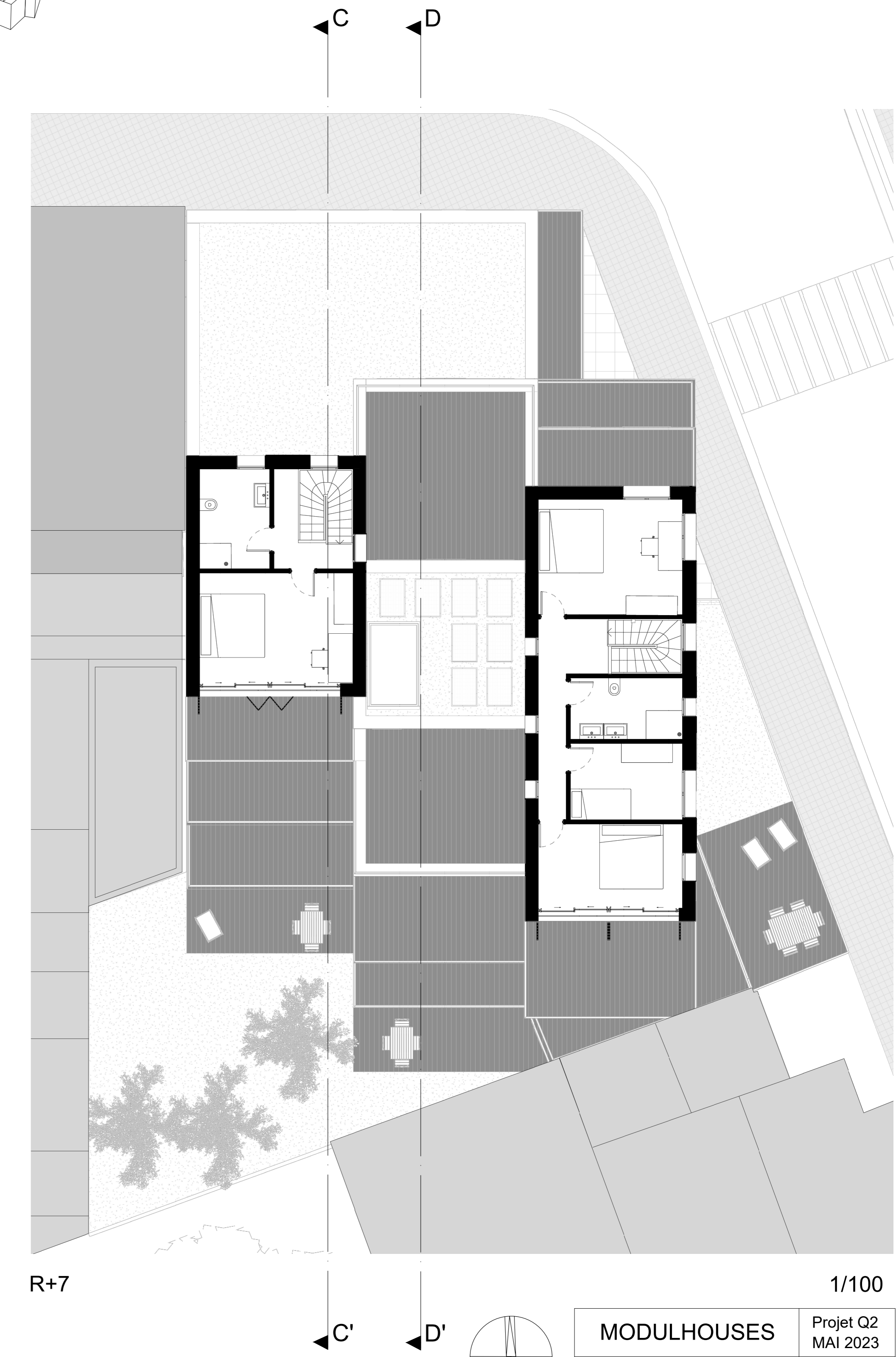
R+5

1/100



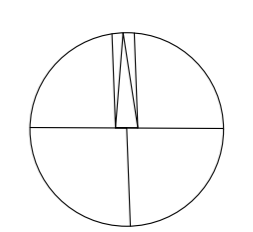
R+6

1/100

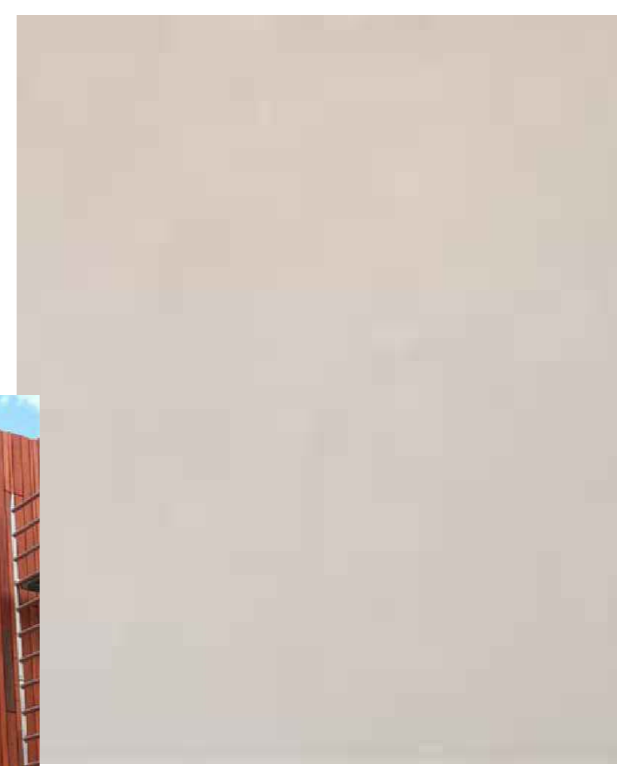
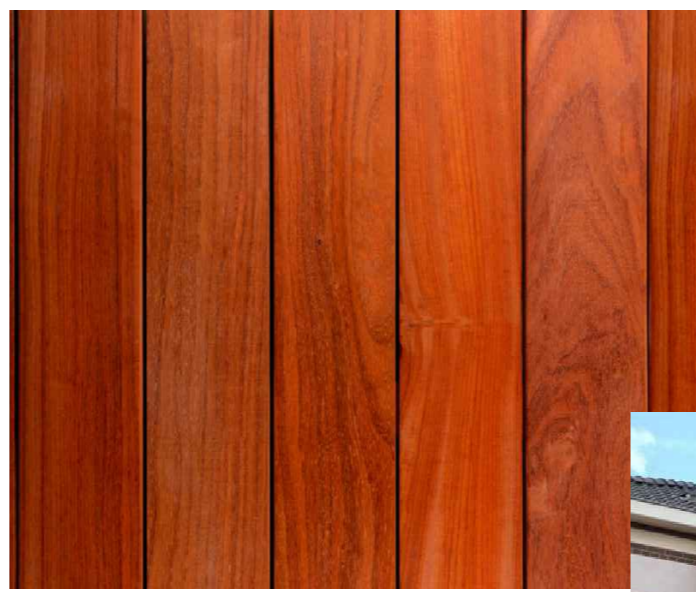


R+7

1/100

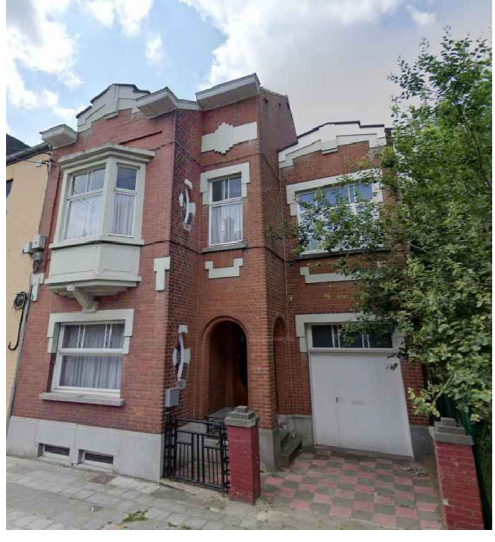


REVETEMENT EXTERIEUR



Enduit minéral
Bardage bois style
Padouk

CONTEXTE - COLORIMETRIE



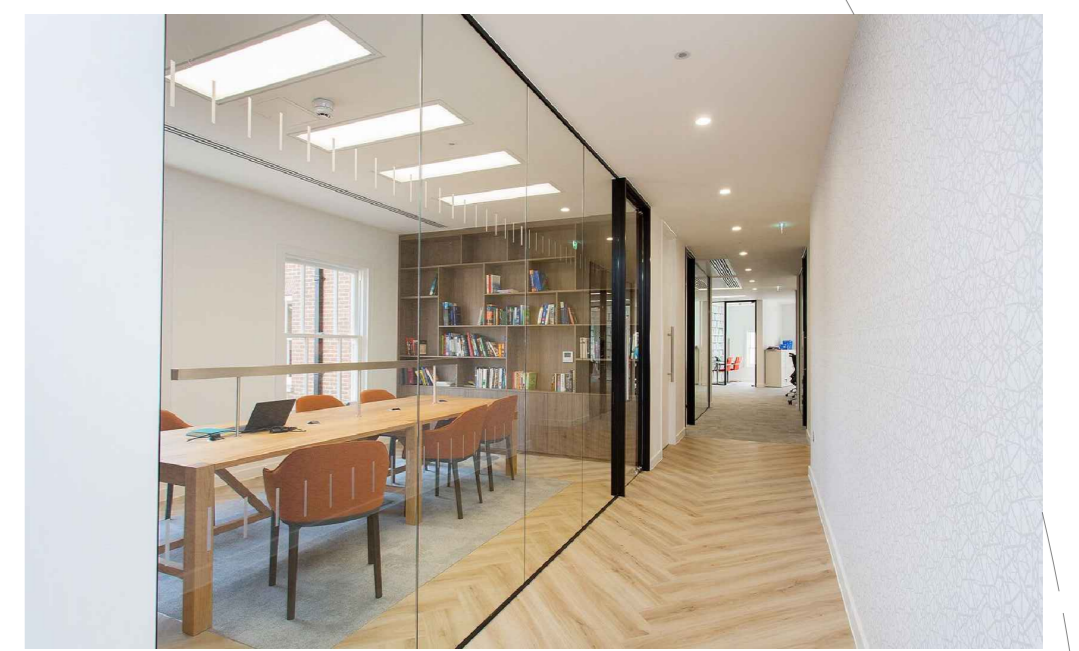
POSITION BARDAGE
RELIEF FACADE
GARDE-CORPS



FACADE NORD-EST

MOODBOARD

FACADE SUD-OUEST



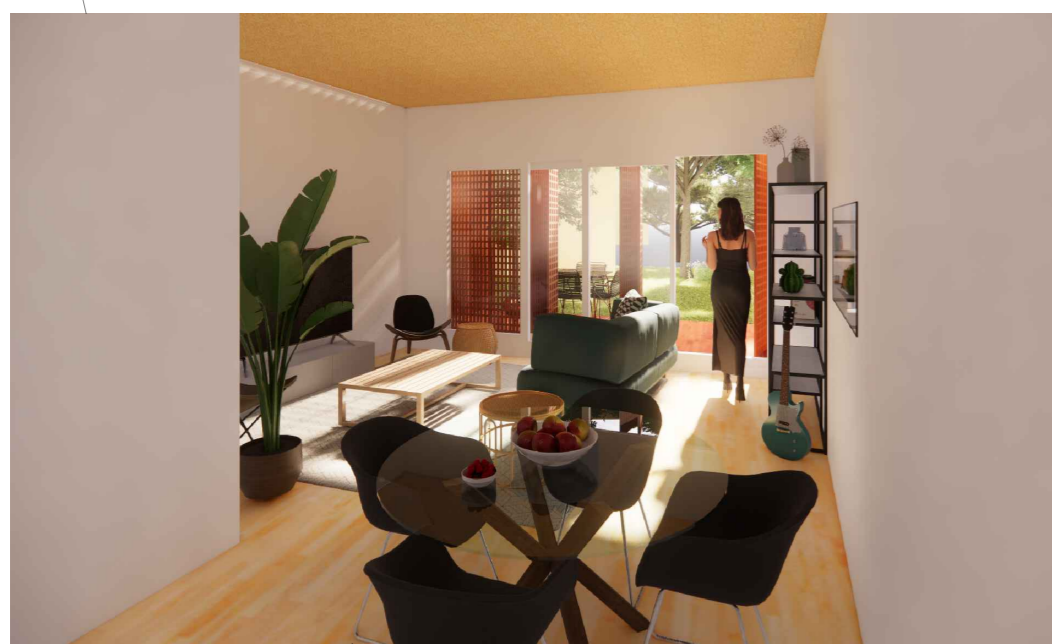
BUREAU D'ARCHITECTURE



TOITURE



Extensive et panneaux
photovoltaïques



Simulation 3D intérieur 80m²



Imposte



INTERIEUR



Volets en accordéon et
volets fixes

OUVERTURES



ENTREE ET PARKING

