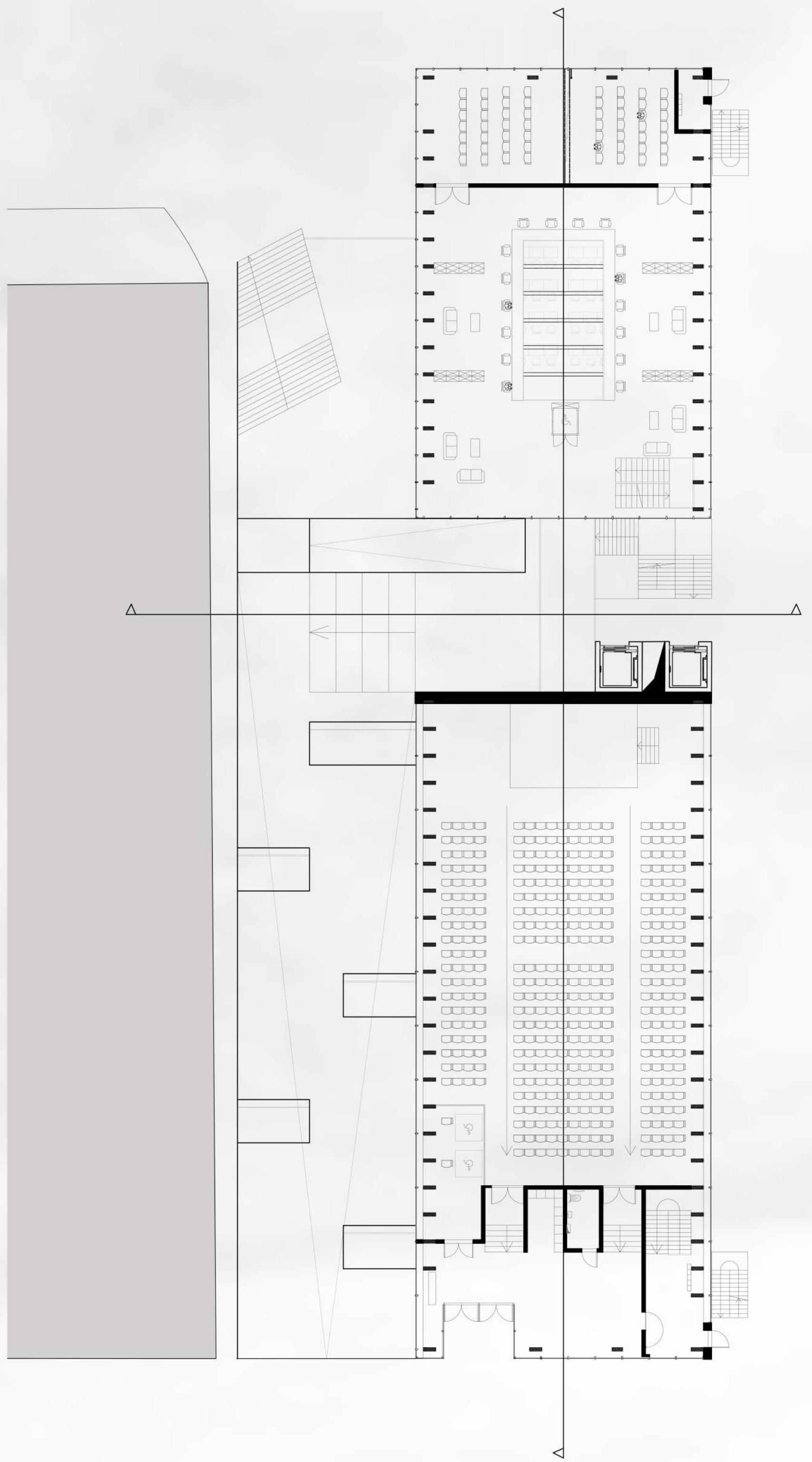
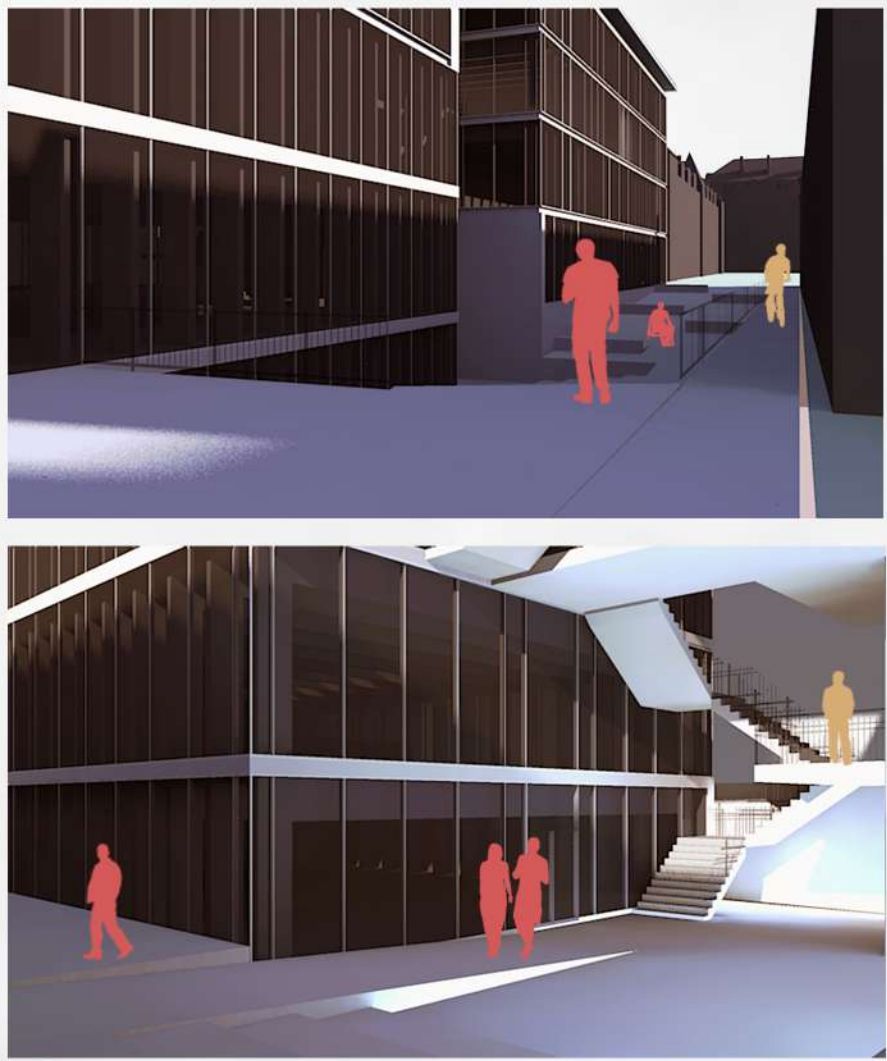
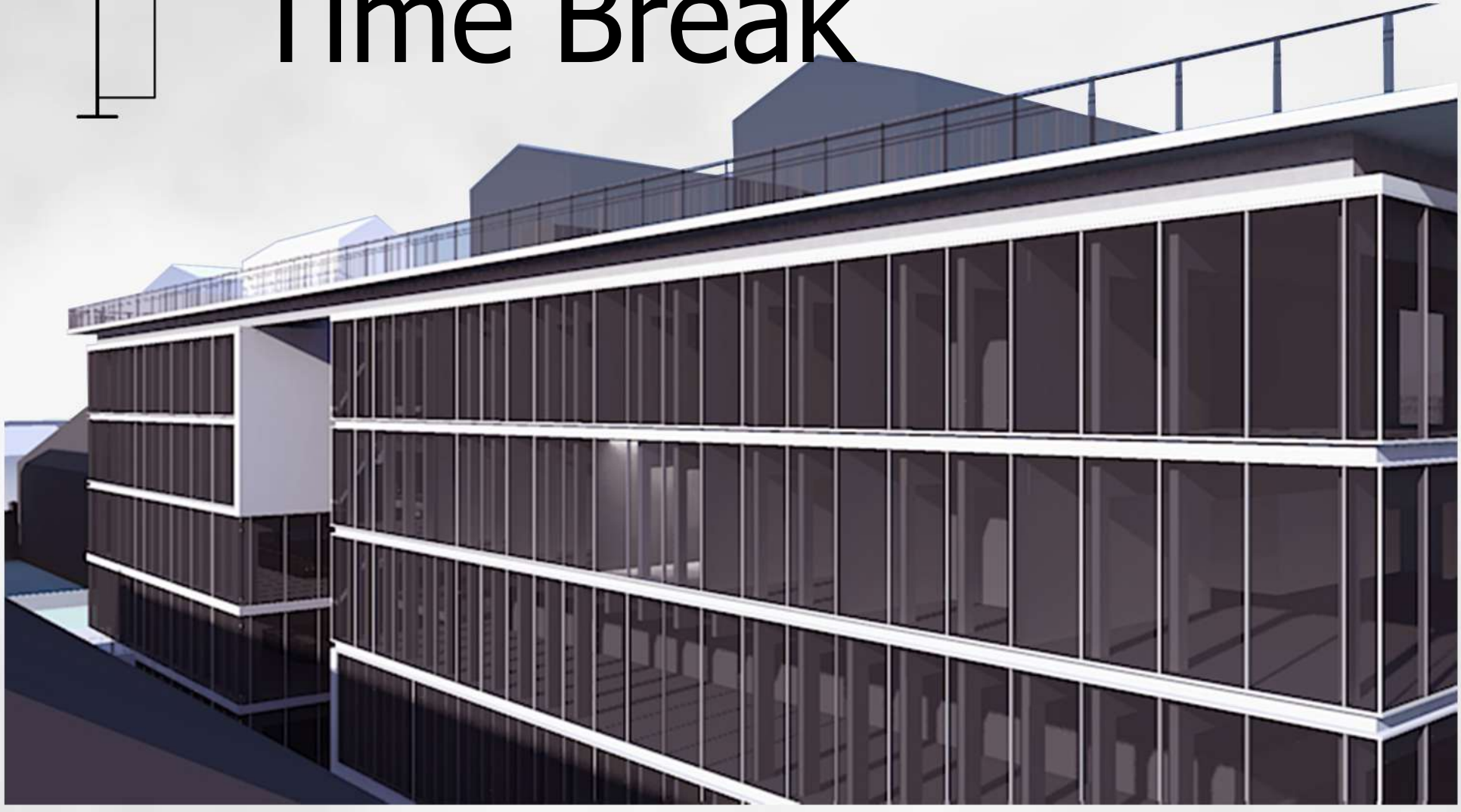
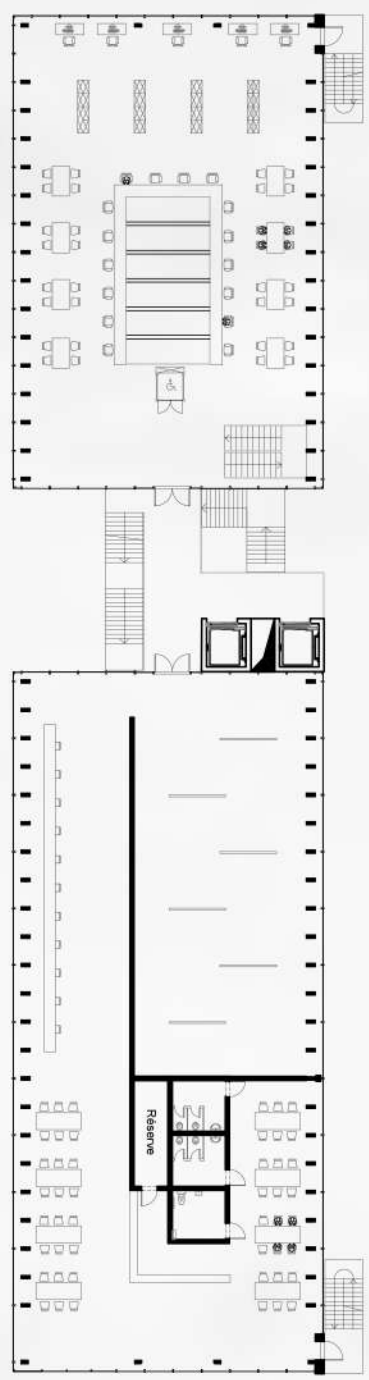


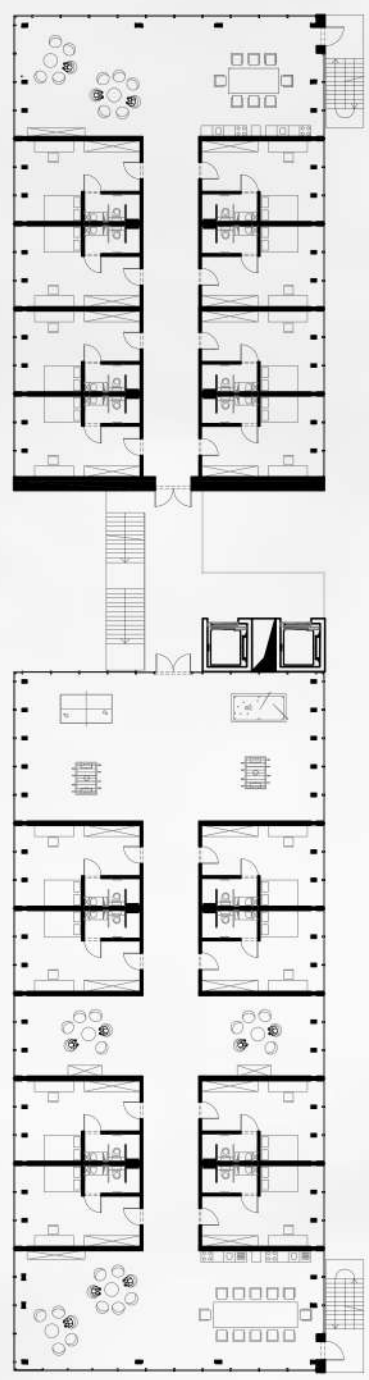
Time Break



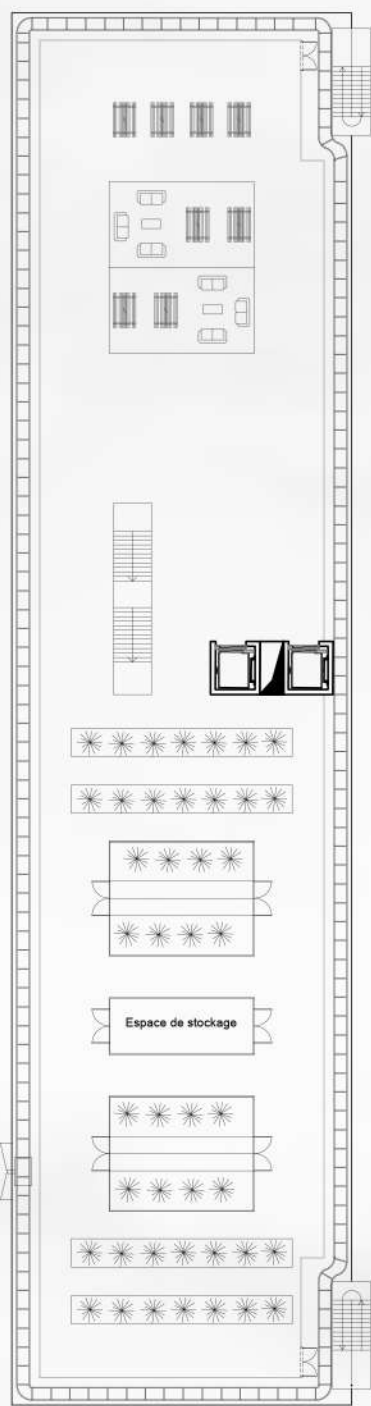
RDC



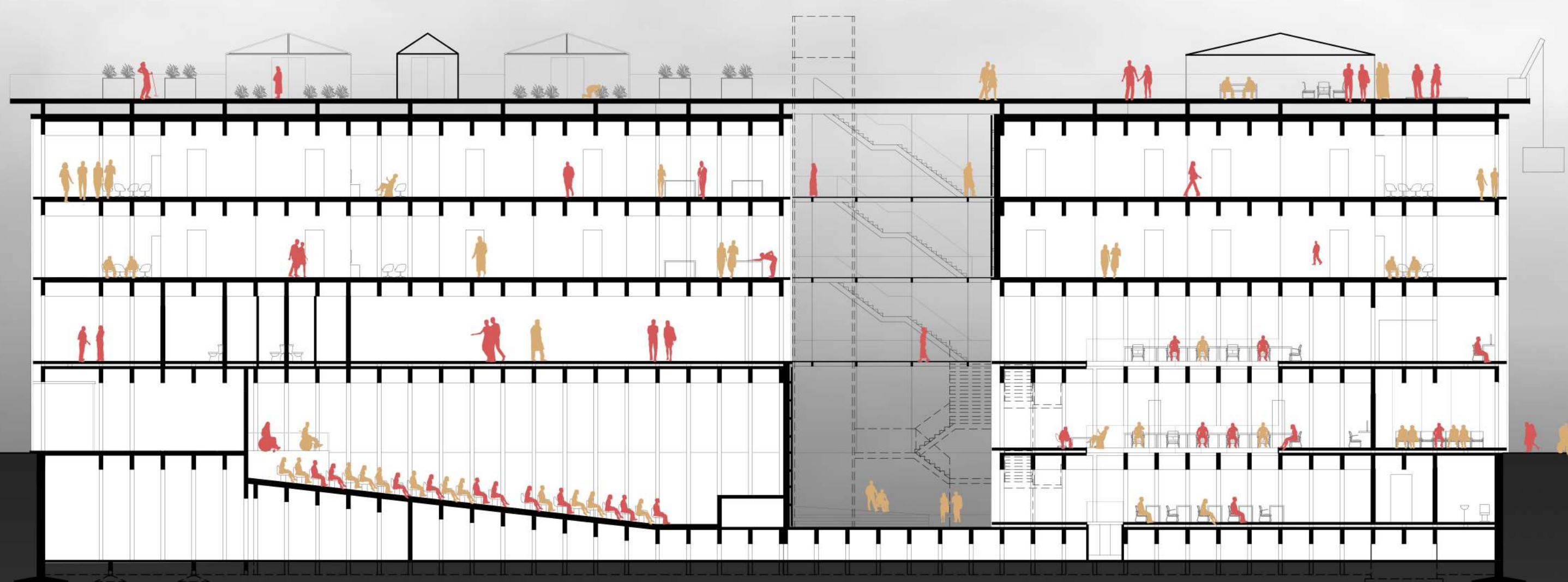
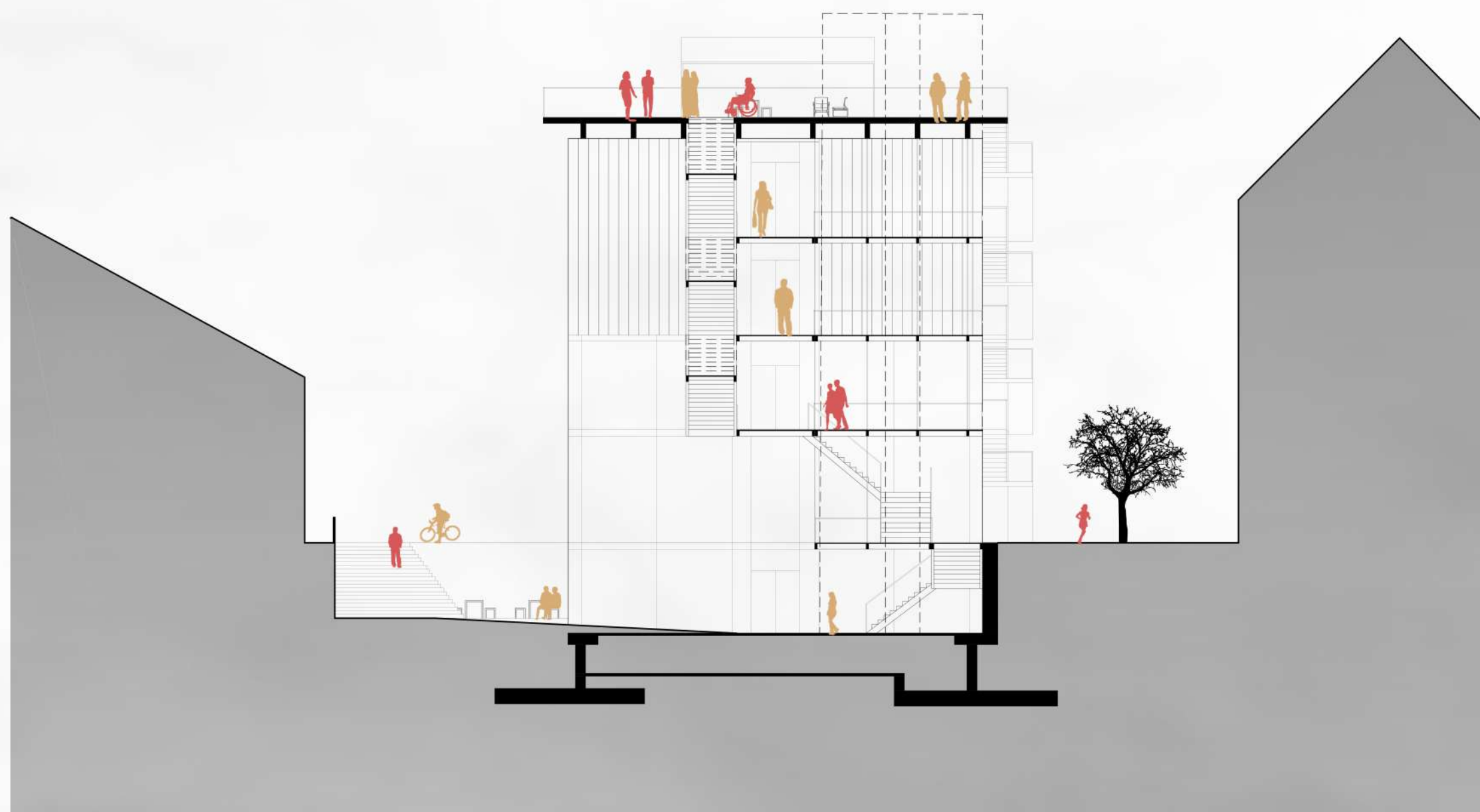
R + 1

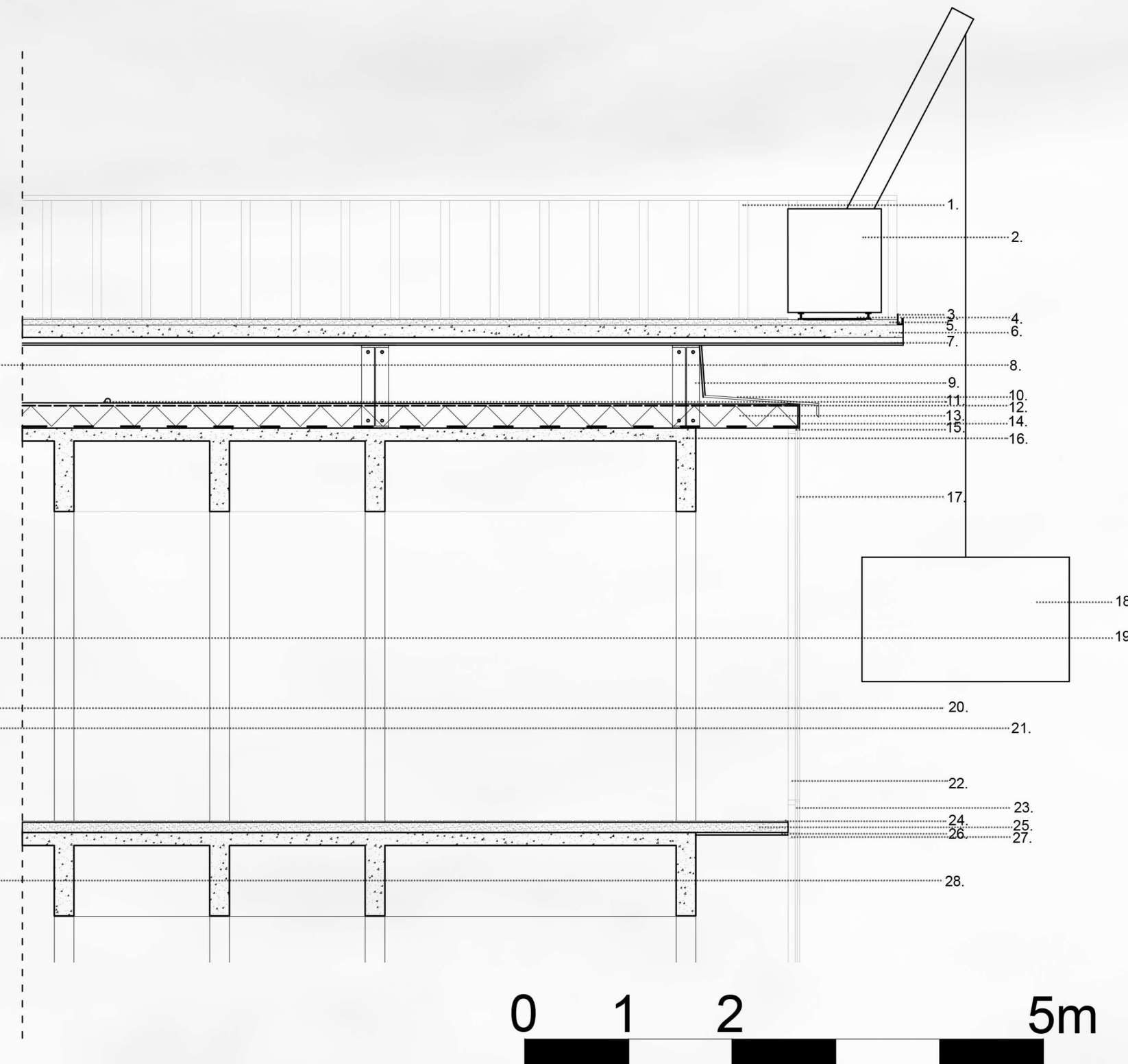
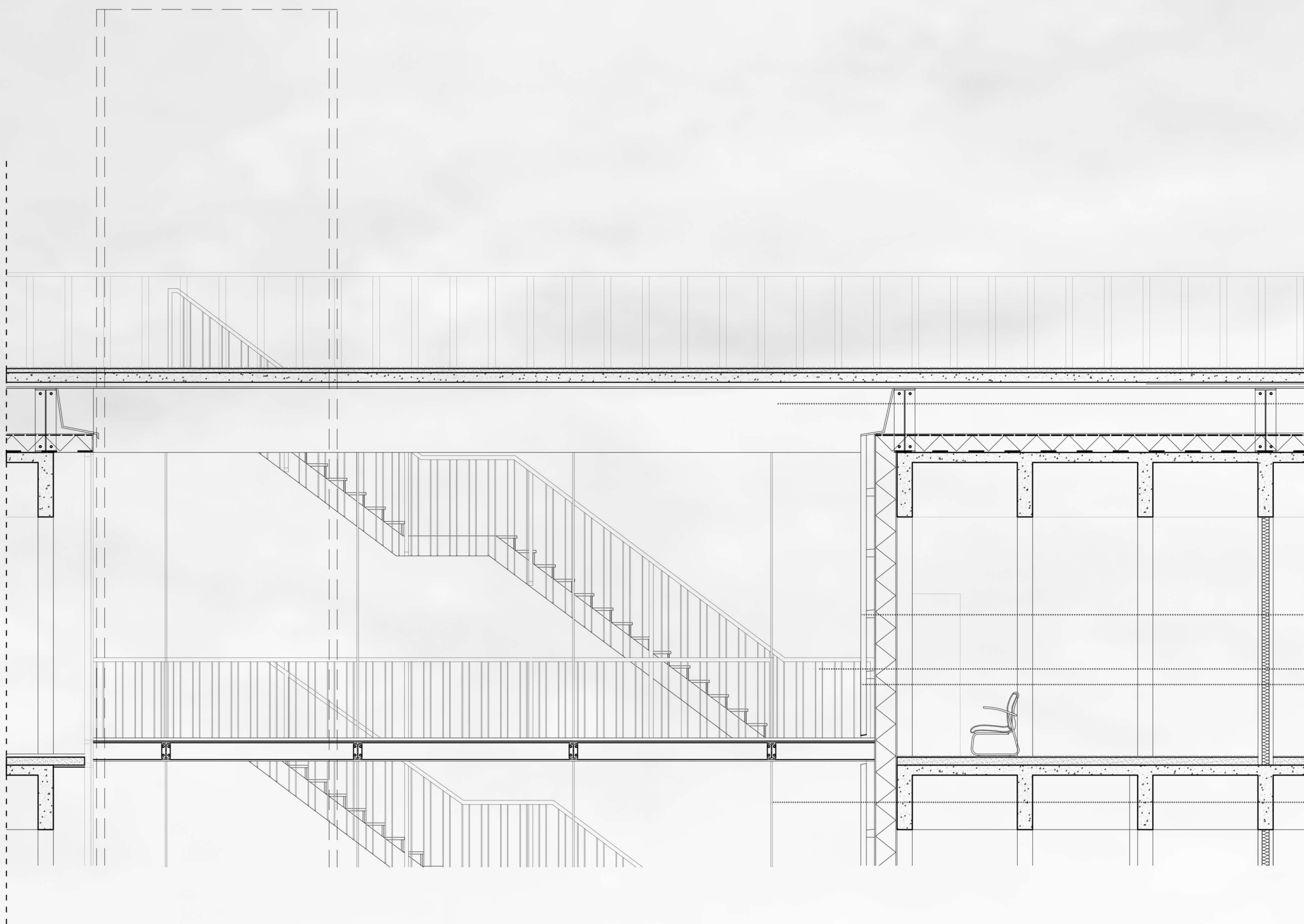
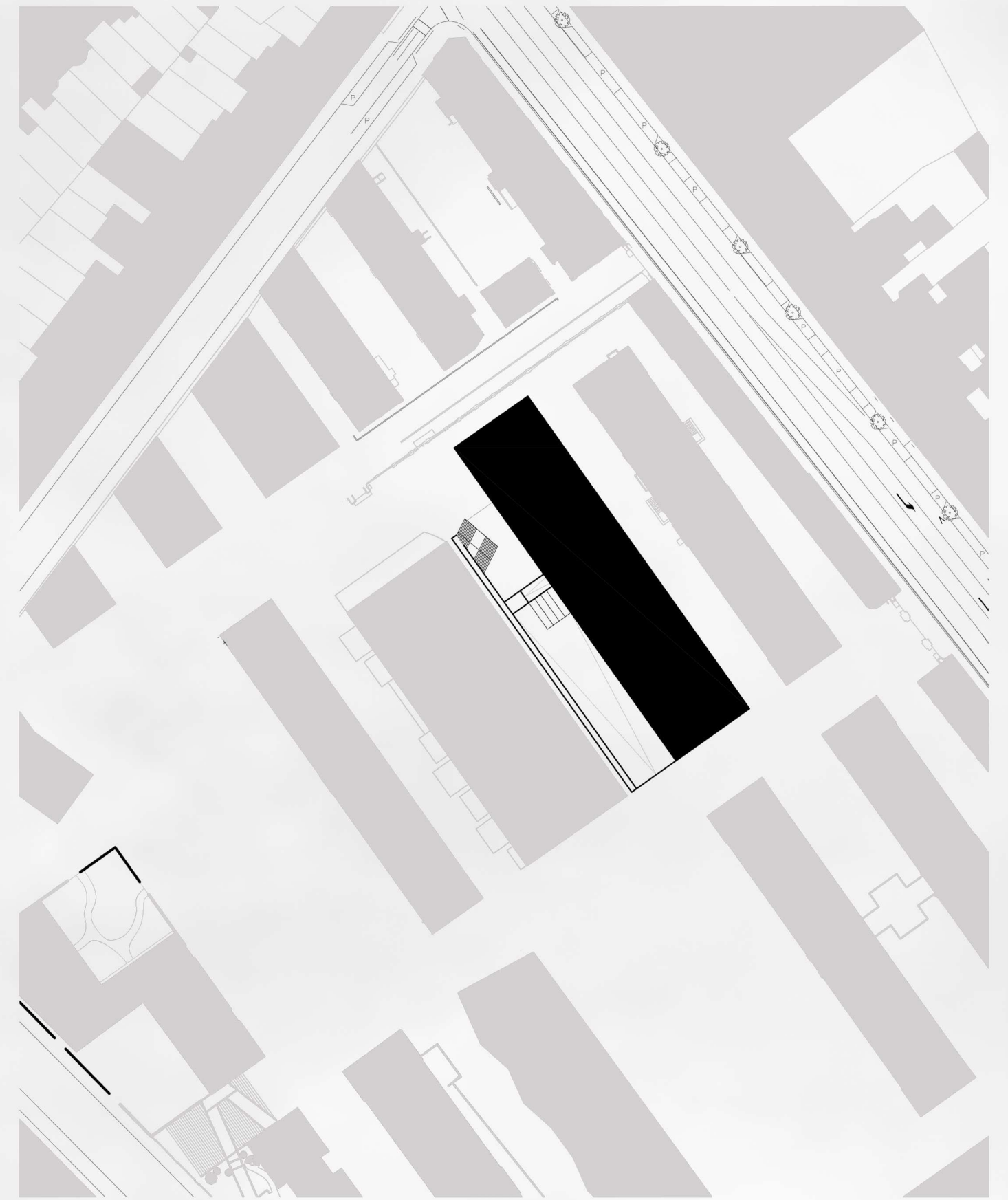


R + 2 / R + 3



R + 4





- | | | | | | | |
|------------------------------|---------------------------|----------------------------|-----------------------------|--------------------------|-------------------------|-------------------------|
| 1. Garde-corps en acier | 5. Chape | 9. Poutre transversale IPE | 13. Isolation rigide | 17. Mur rideau | 21. Bardage en acier | 25. Chape |
| 2. Mécanisme pour la nacelle | 6. Béton de pente | 10. Rejet d'eau | 14. Revêtement en aluminium | 18. Nacelle | 22. Montant mur rideau | 26. Revêtement plafond |
| 3. Chéneau | 7. Bac acier | 11. Evacuation des eaux | 15. Joint mur rideau | 19. Lattage horizontal | 23. Vitrage opaque | 27. Traverse mur rideau |
| 4. Rail | 8. Poutre longitudinale T | 12. Membrane d'étanchéité | 16. Dalle nervurée | 20. Garde-corps en acier | 24. Revêtement plancher | 28. Tirant |

