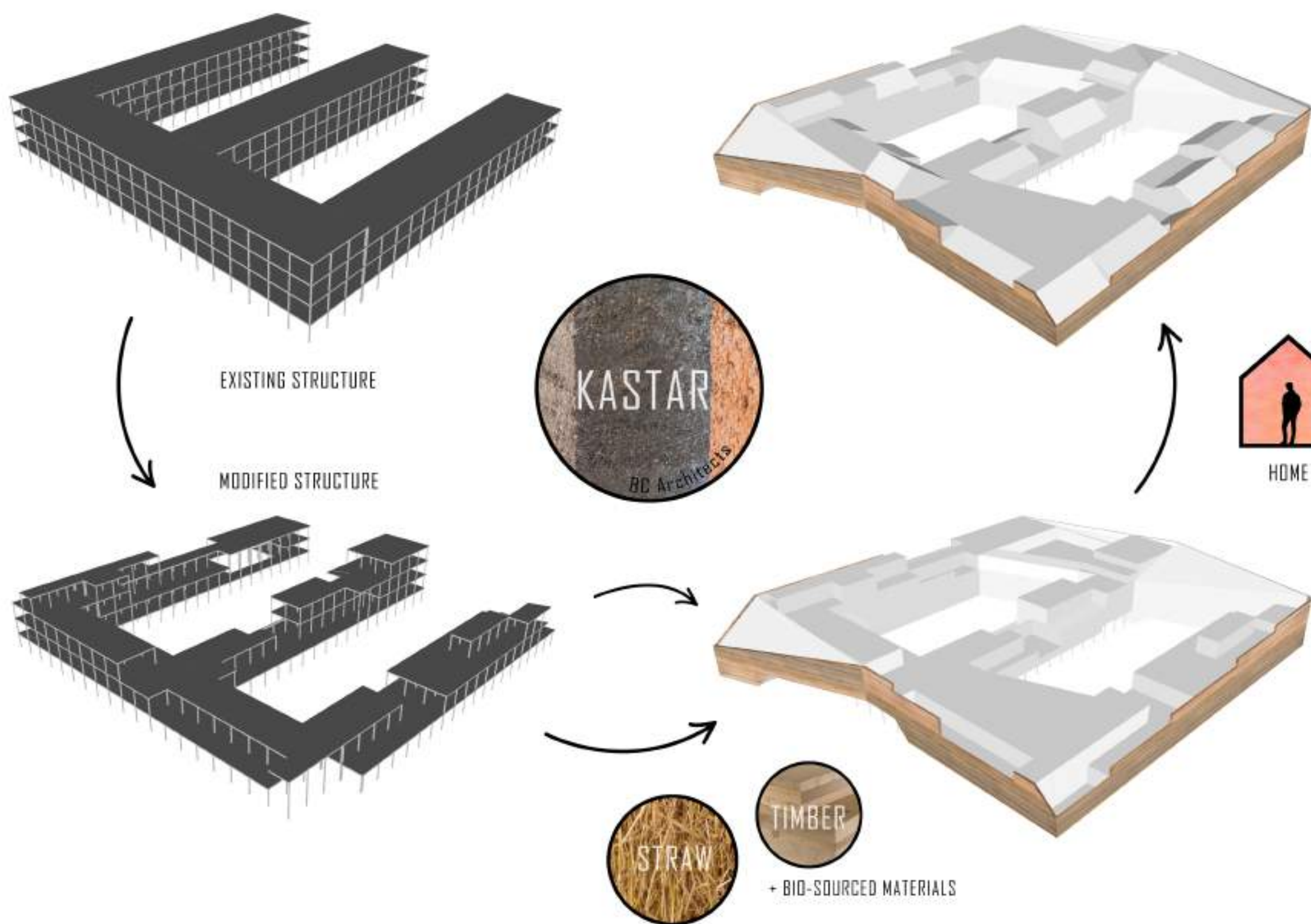


SUSTAINABLE SCHOOL DESIGN



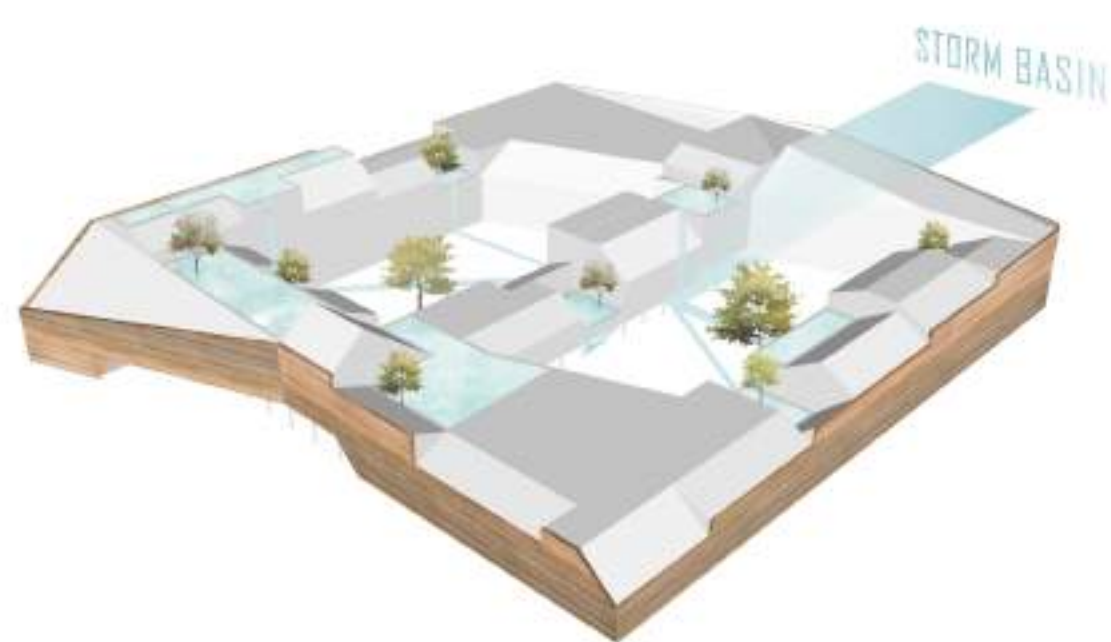
ECO-CONSTRUCTION



When mentioning sustainable architecture, one generally thinks of designing a building that respects the environment with low energy consumption and minimum embedded carbon. A building that lasts in time and which is healthy and comfortable for the users. Today, these goals are generally achieved. The next step is to consider a building that can even have a longer life-span within these criterium: this can be achieved by reusing an existing structure to give it a second life.

The project consists of transforming an office building into a primary and secondary school. This new program suits well the building according to the classic concrete frame (3.6m x 3.6m) which is interesting to convert into an educative space. Moreover, a school is a key element in the development of a new sustainable neighbourhood: creating interaction between people and teaching them how to live in a sustainable way. By modifying the existing structure and reimplementing the removed materials combined with some other local bio-sourced materials (straw and timber), an energy-effective, healthy and comfortable design can be reached while decreasing the embedded carbon of the building. According to some ideas of active pedagogy, tree main elements were used to design the new building: connection with nature, a various program and social mixity. Social interaction in the building is promoted by including a public library in the school and by mixing the multiple functions. The spaces are designed to encourage the sharing experiences in a comfortable atmosphere.

WATER & NATURE



SUNLIGHT



MIXITY





SURROUNDINGS 1:750 ↑

EDUCATION IDEAS



MONTESORI

RICH ENVIRONMENT
NATURE
LIGHT
ADAPTED SPACES



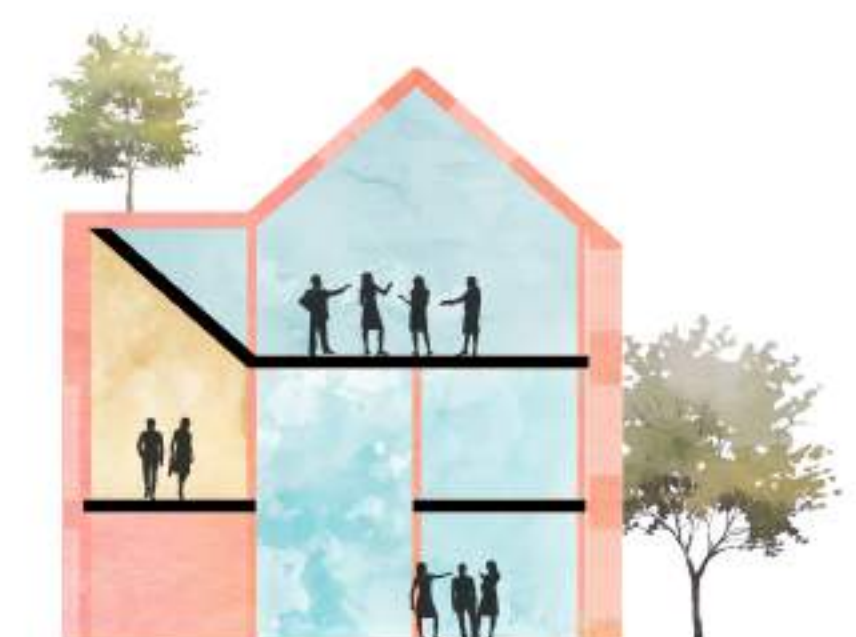
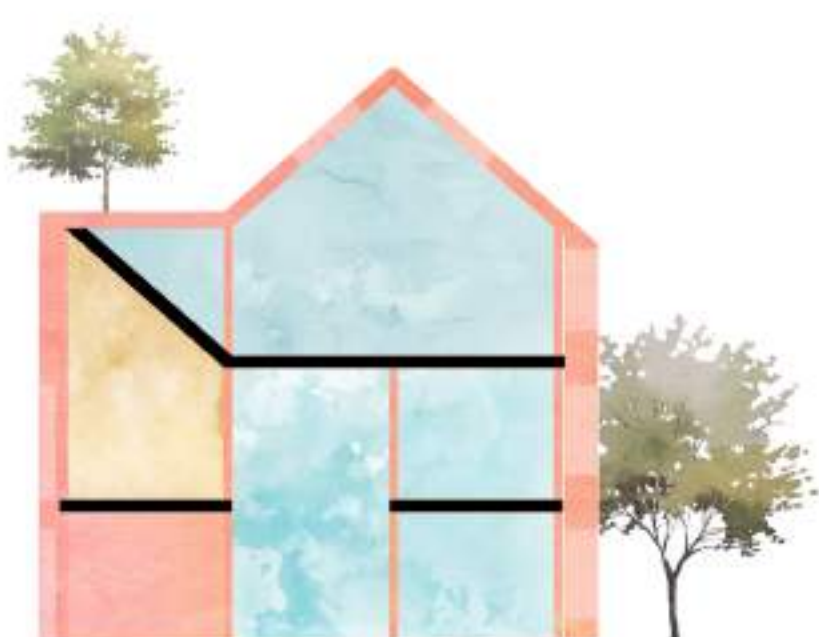
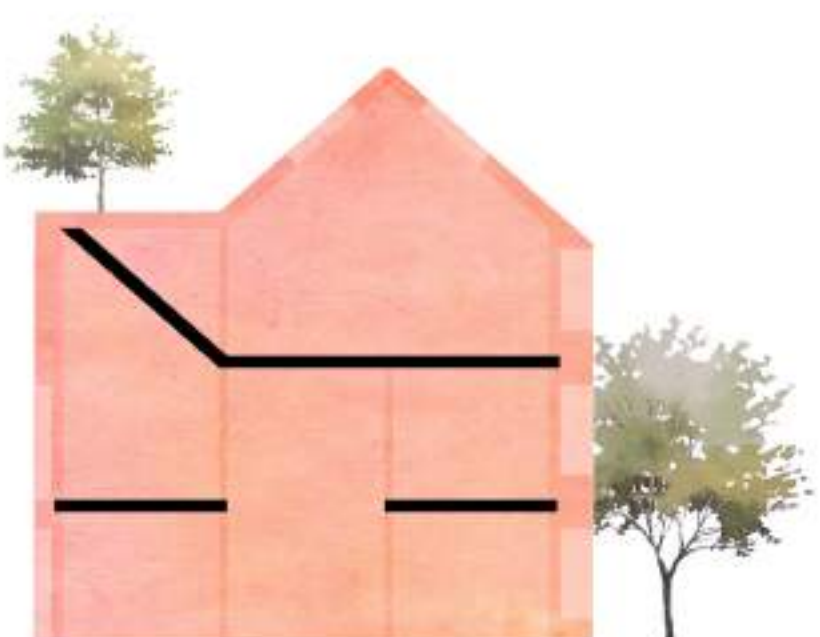
STEINER

CURIOUS CHILDREN
VARIOUS EXPERIENCES
RICH PROGRAM

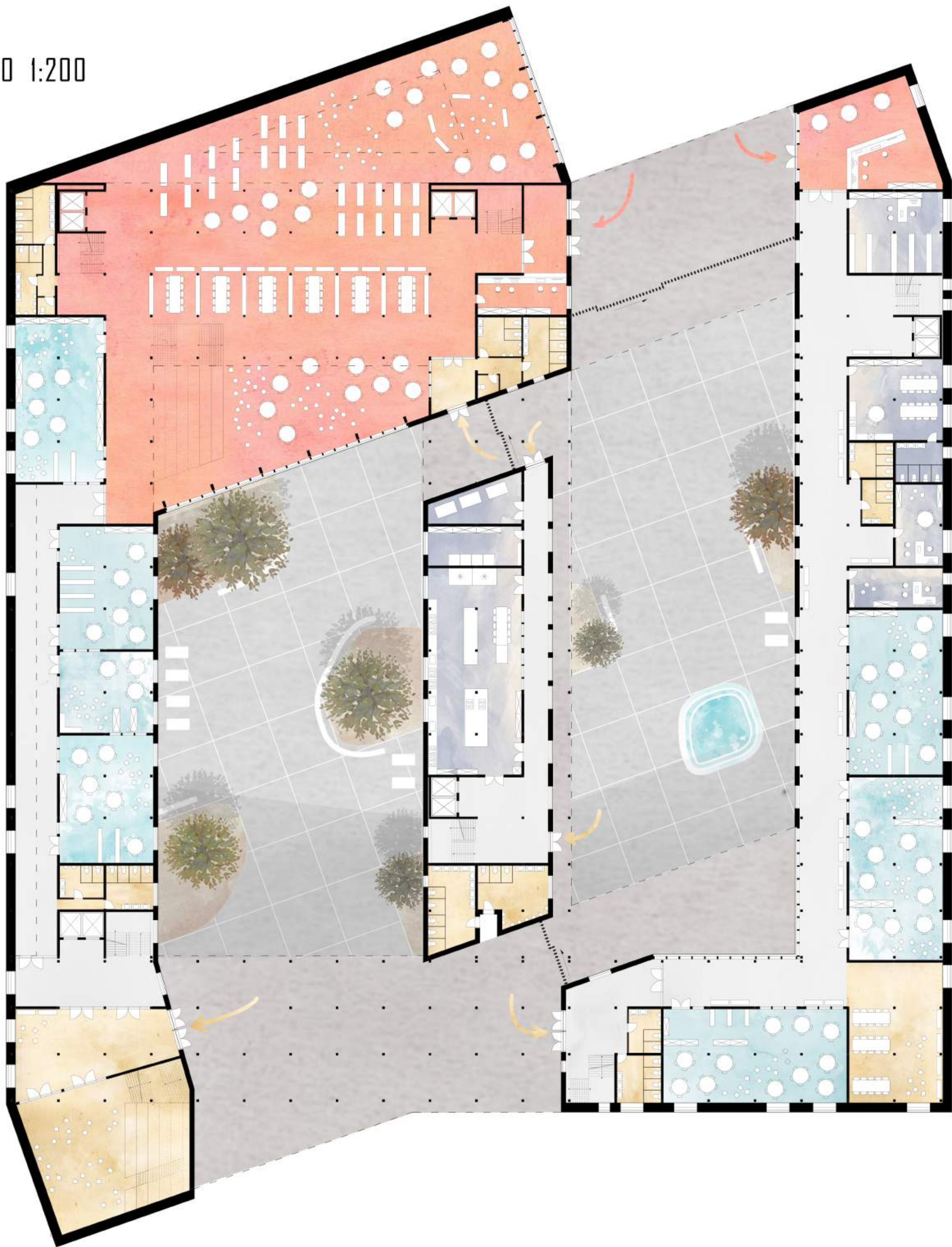


FREINET

CHILDREN INTERACTION
DISCUSSIONS
SHARING EXPERIENCES

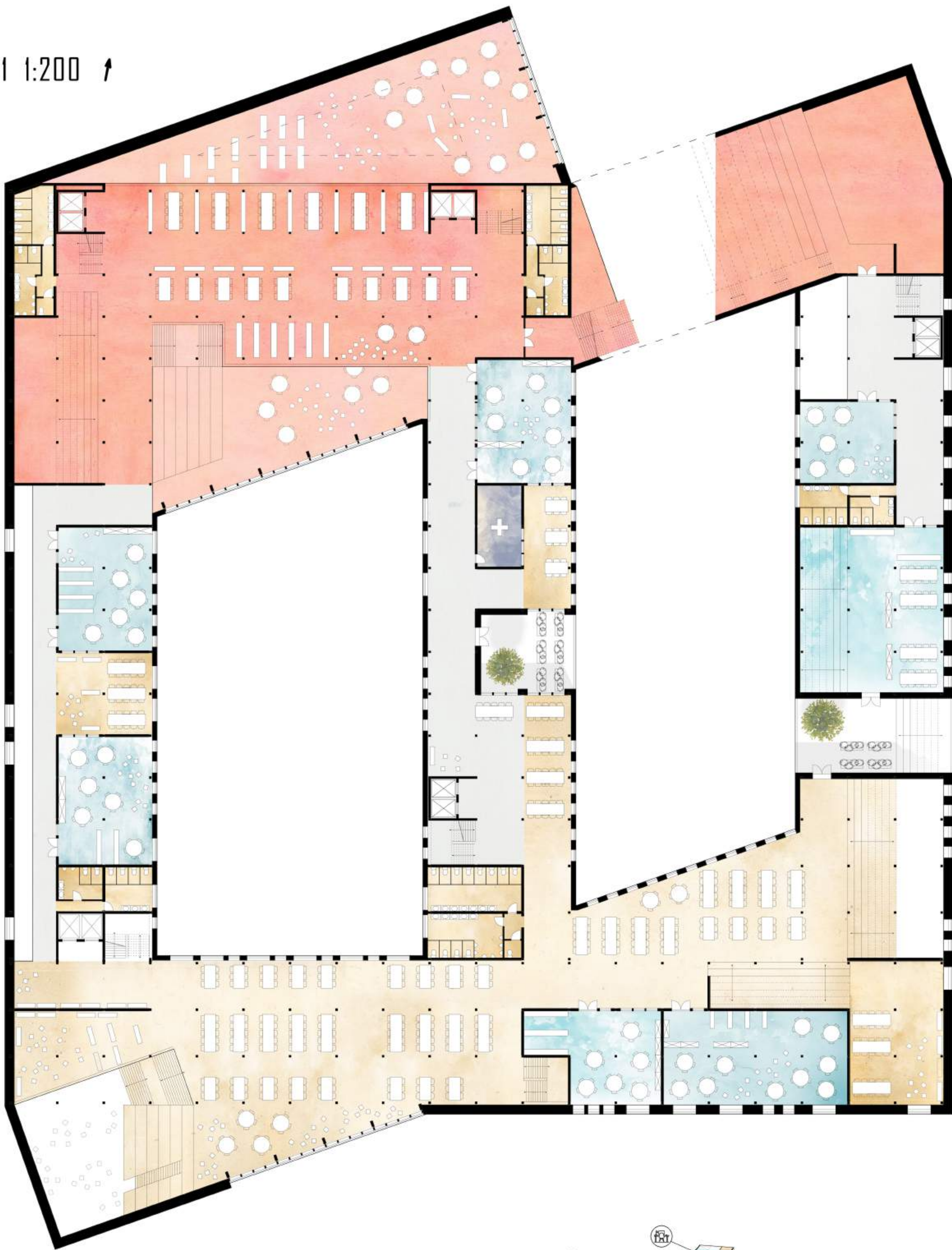


PLAN +0 1:200



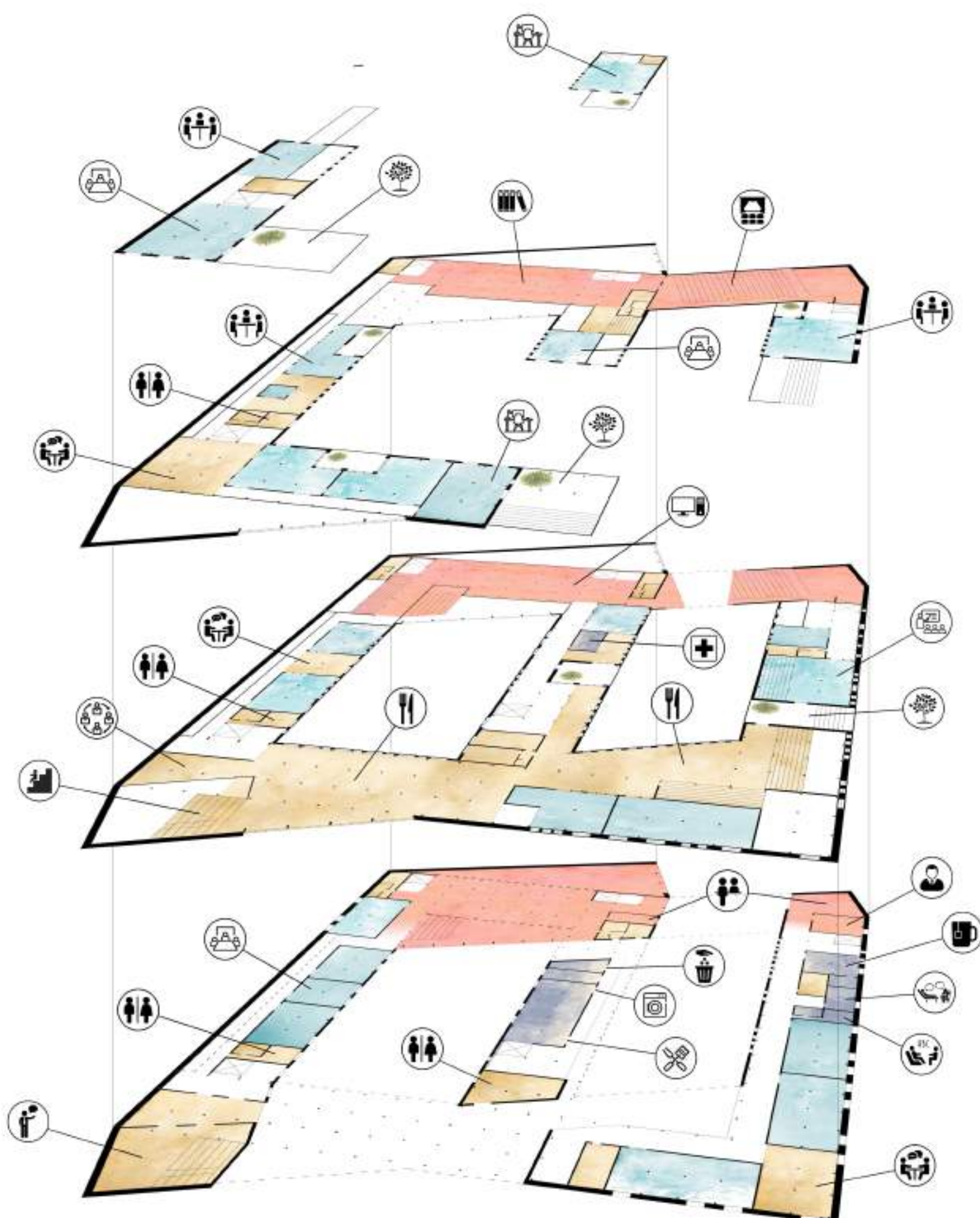
3D VIEW PUBLIC LIBRARY



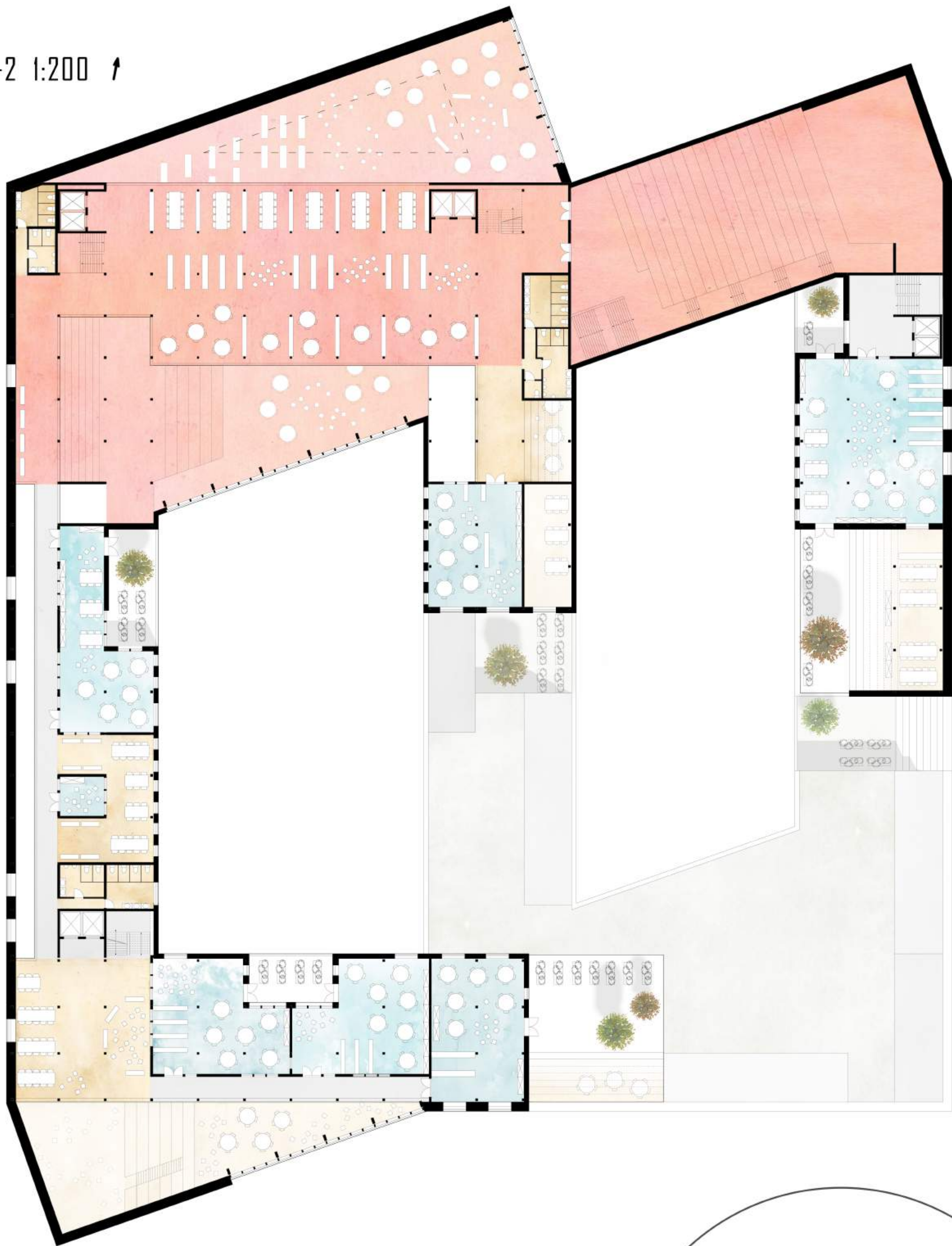


PROGRAM

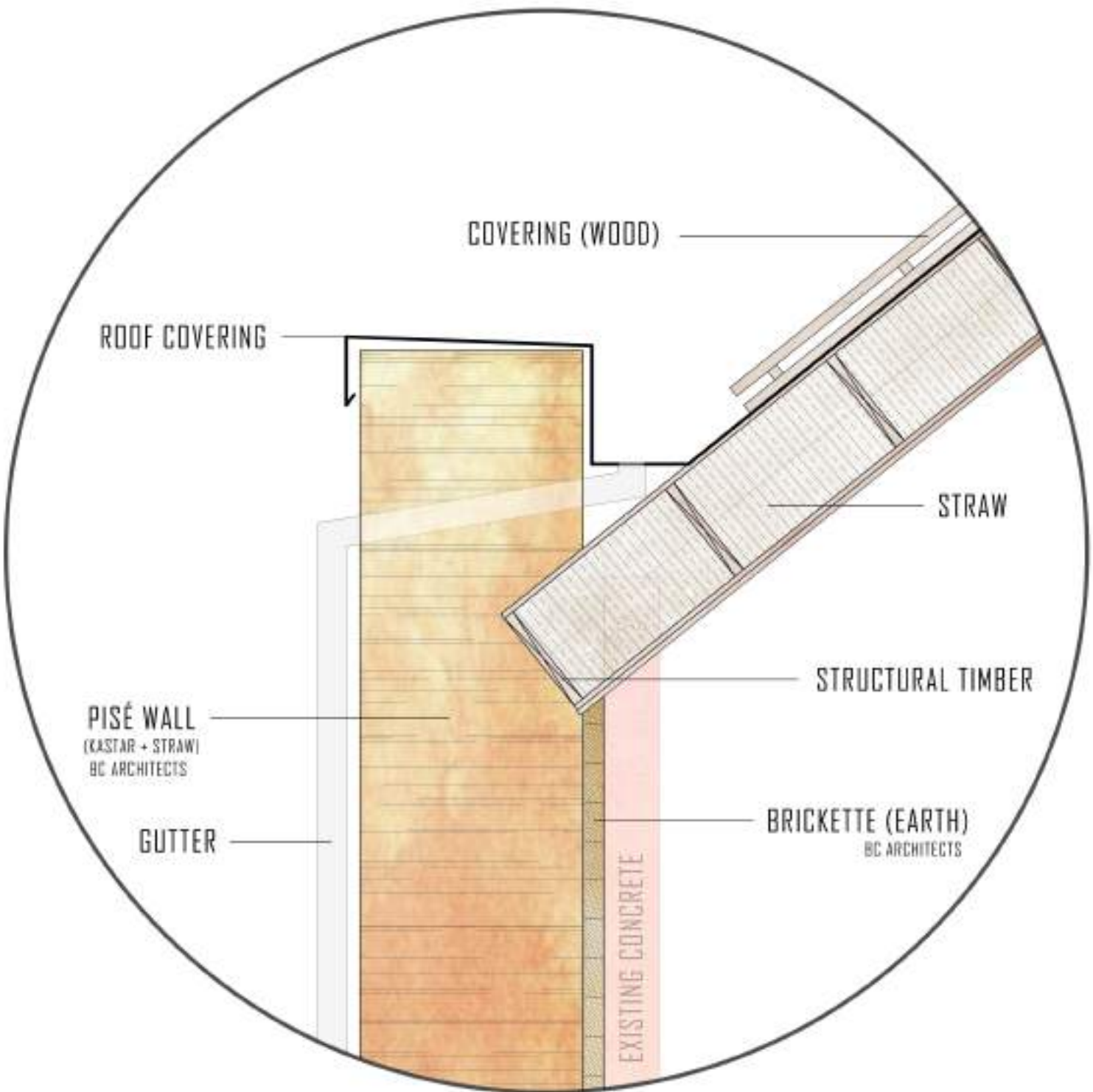
- PRIVATE ROOM (340m²)
- CLASSROOM (1890m²)
- SHARED SPACE (2000m²)
- PUBLIC SPACE (2280m²)



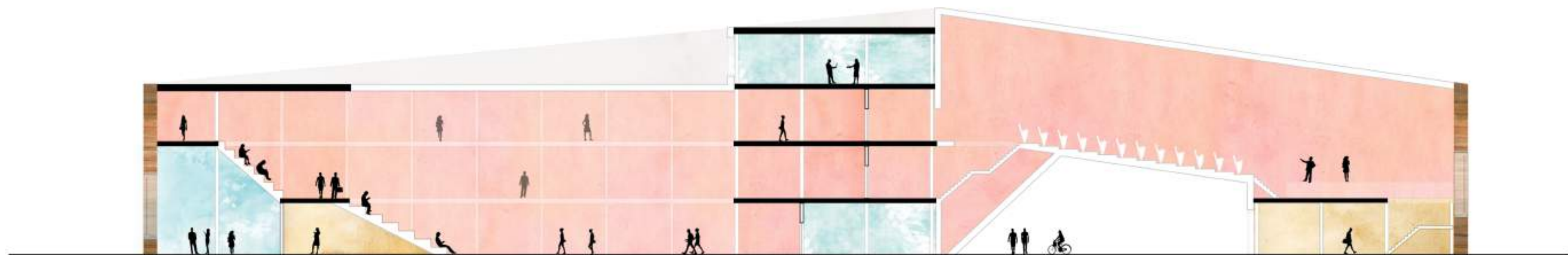
PLAN +2 1:200 ↗



DETAIL ROOF 1:20



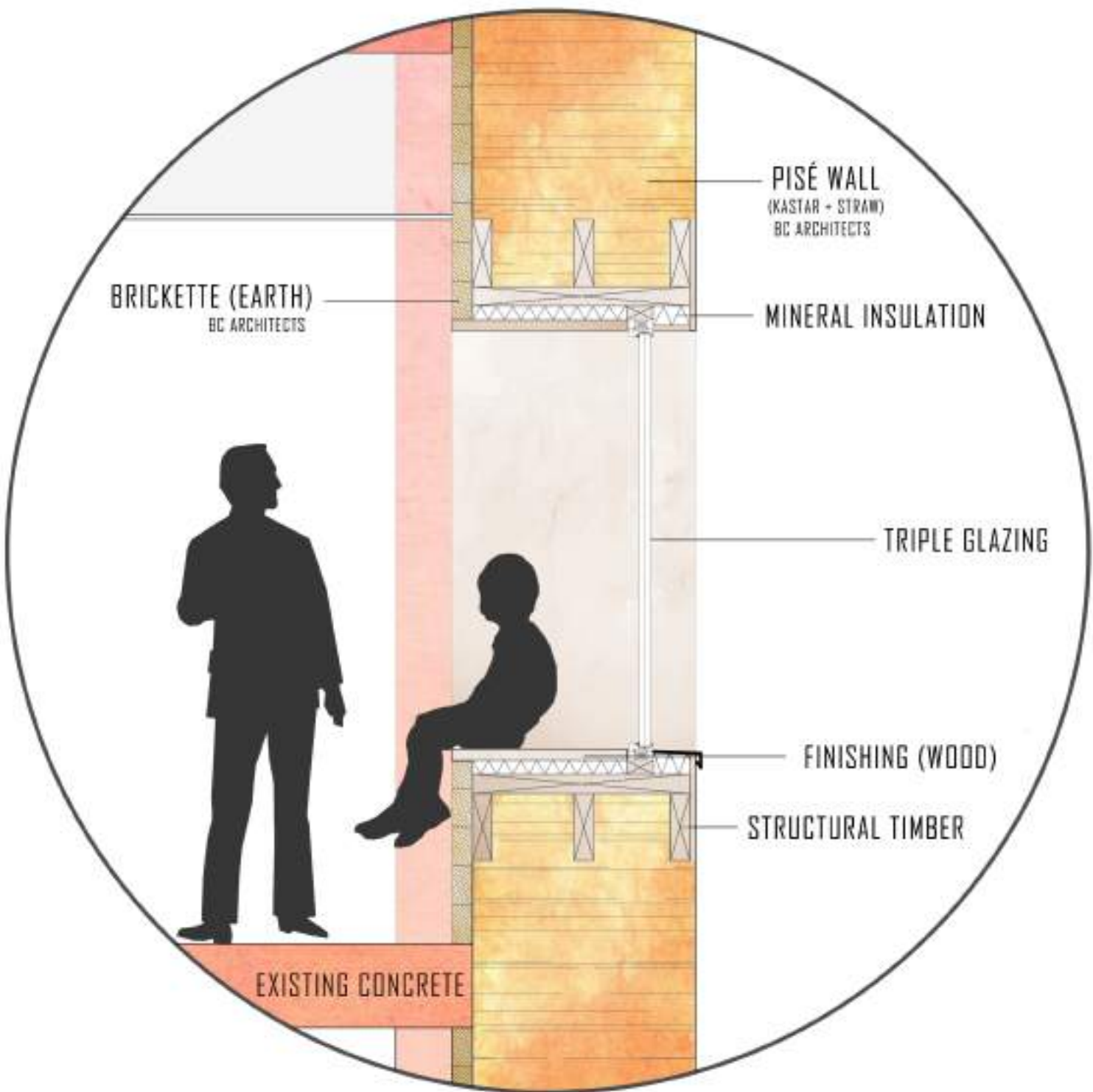
SECTION PUBLIC LIBRARY 1:200



PLAN +3 1:200 ↗



DETAIL WINDOW 1:20



SECTION CLASSROOMS 1:200

