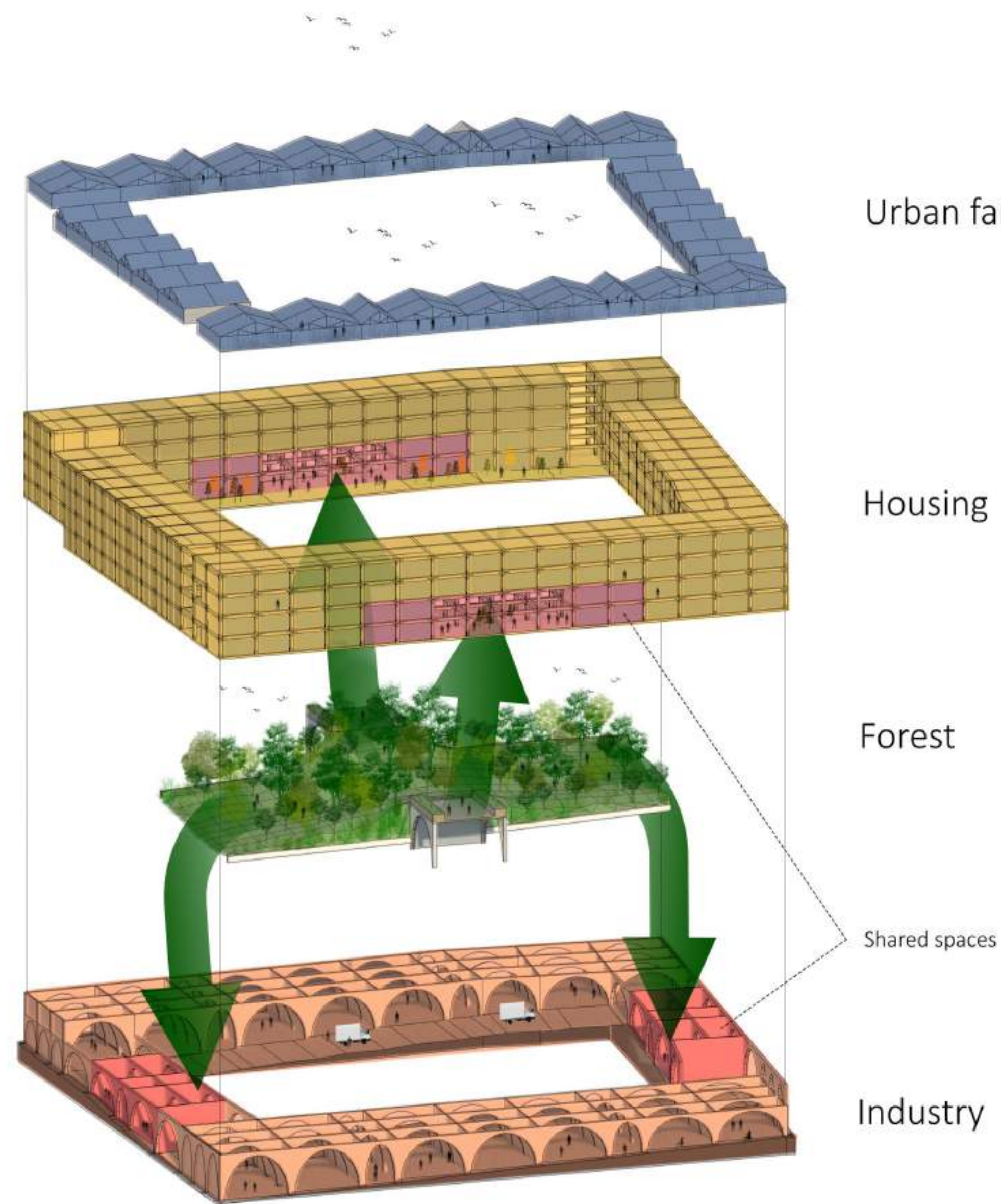


# MIX-CITY

For a sustainable **Industry & Housing** architecture



Master plan : Green Generation



Urban farming

Housing

Forest

Shared spaces

Industry

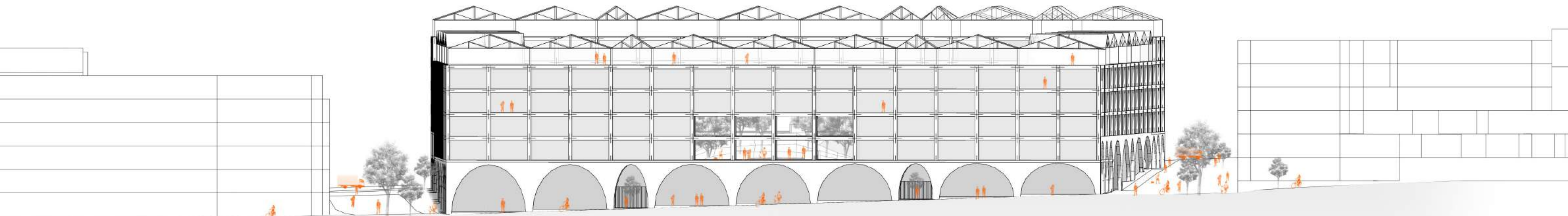
## Vision



- Local :**
- Ateliers
  - Farming
  - Bricks, Wood



- Community :**
- Co-working
  - Shared spaces
  - Central forest



South elevation

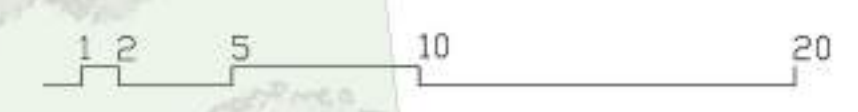
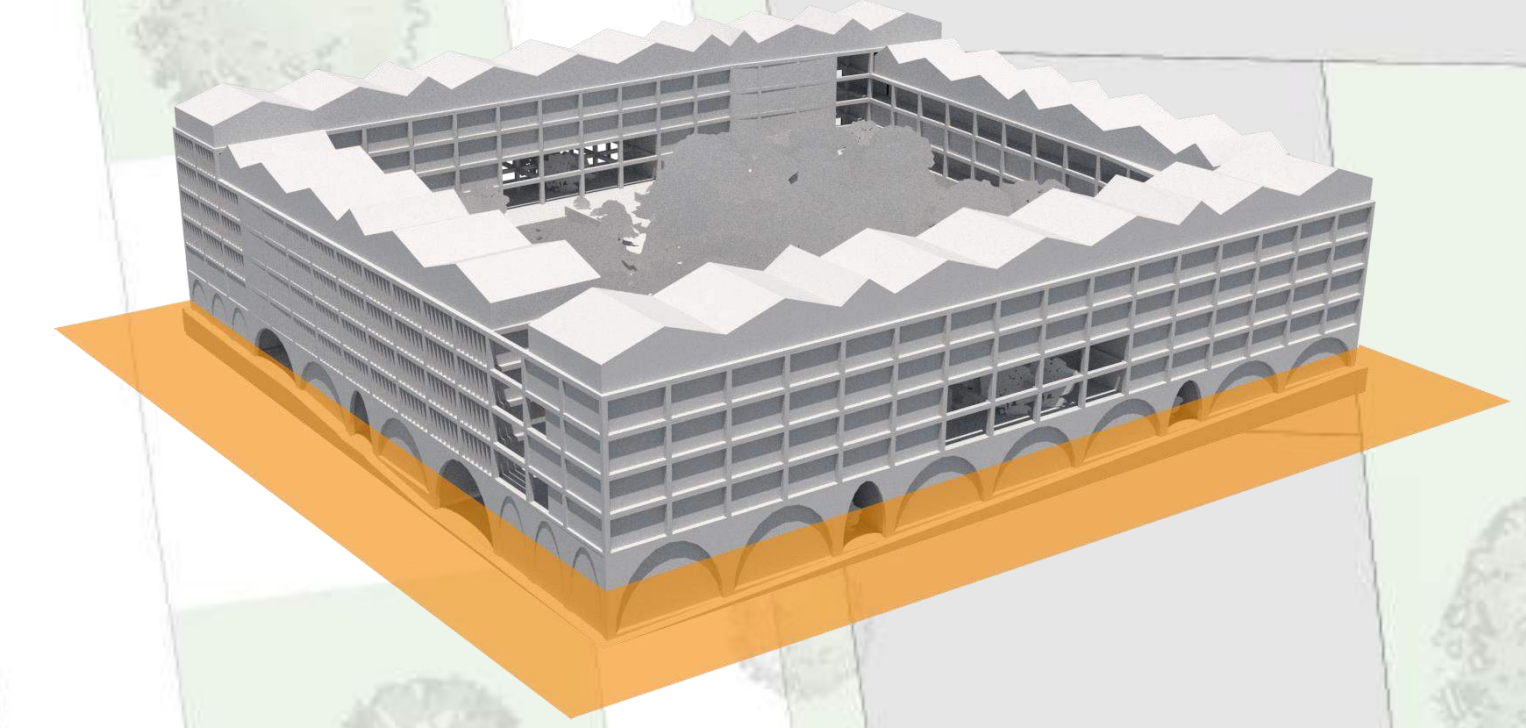


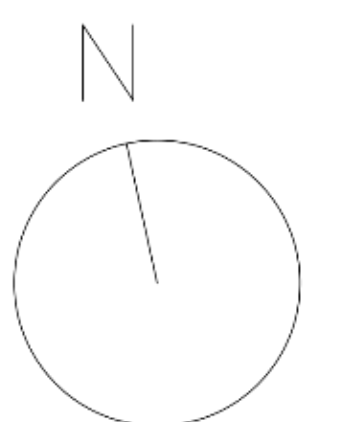
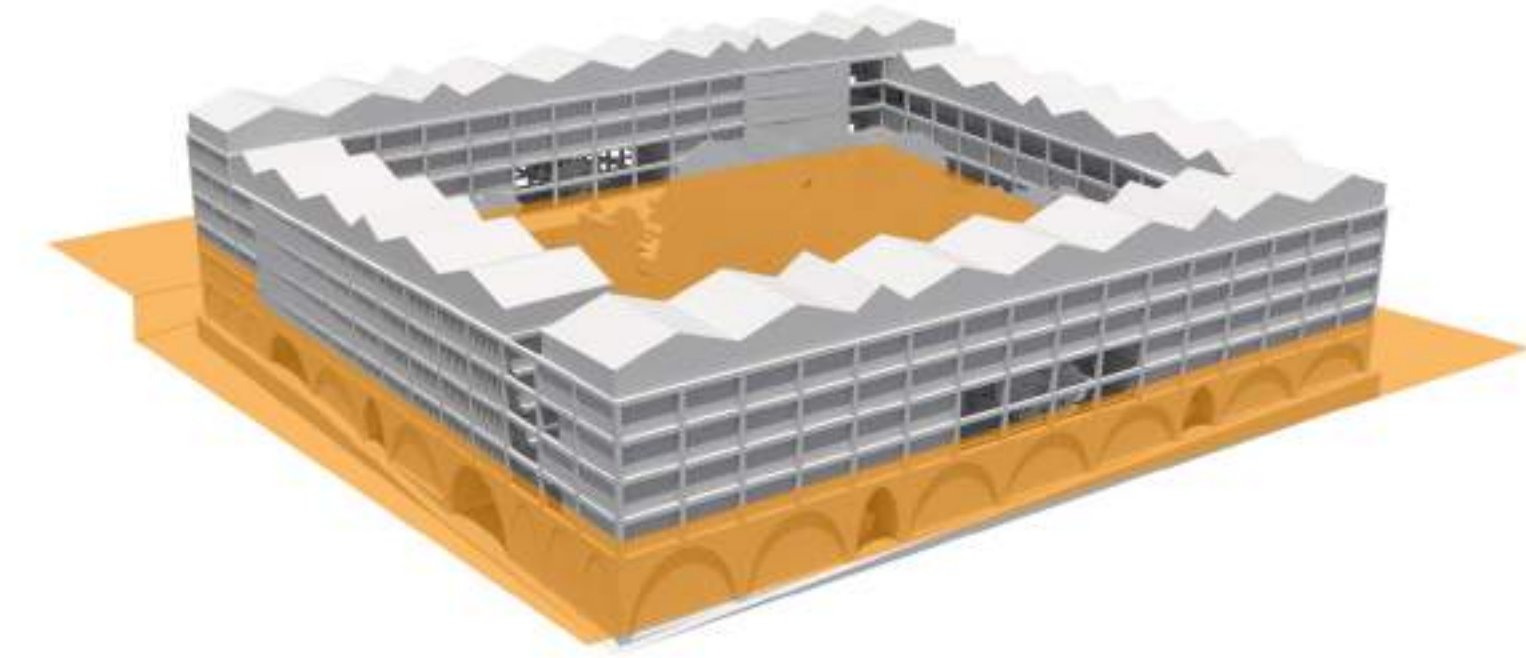
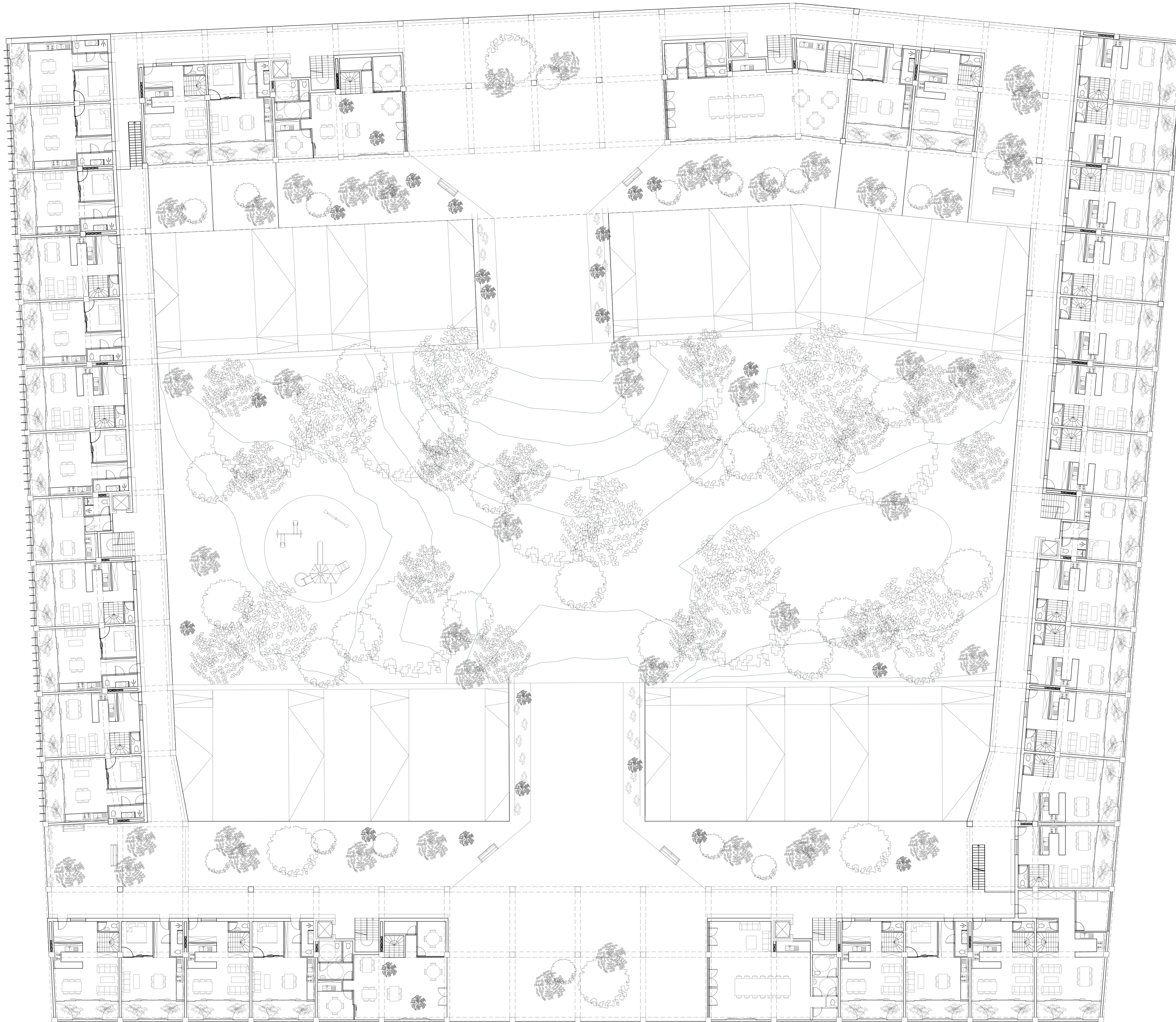


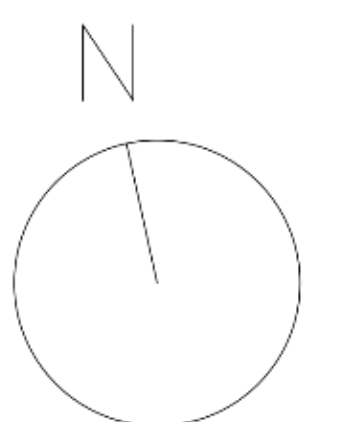
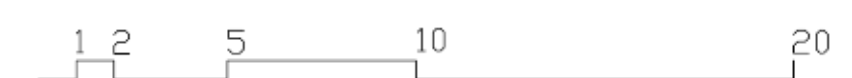
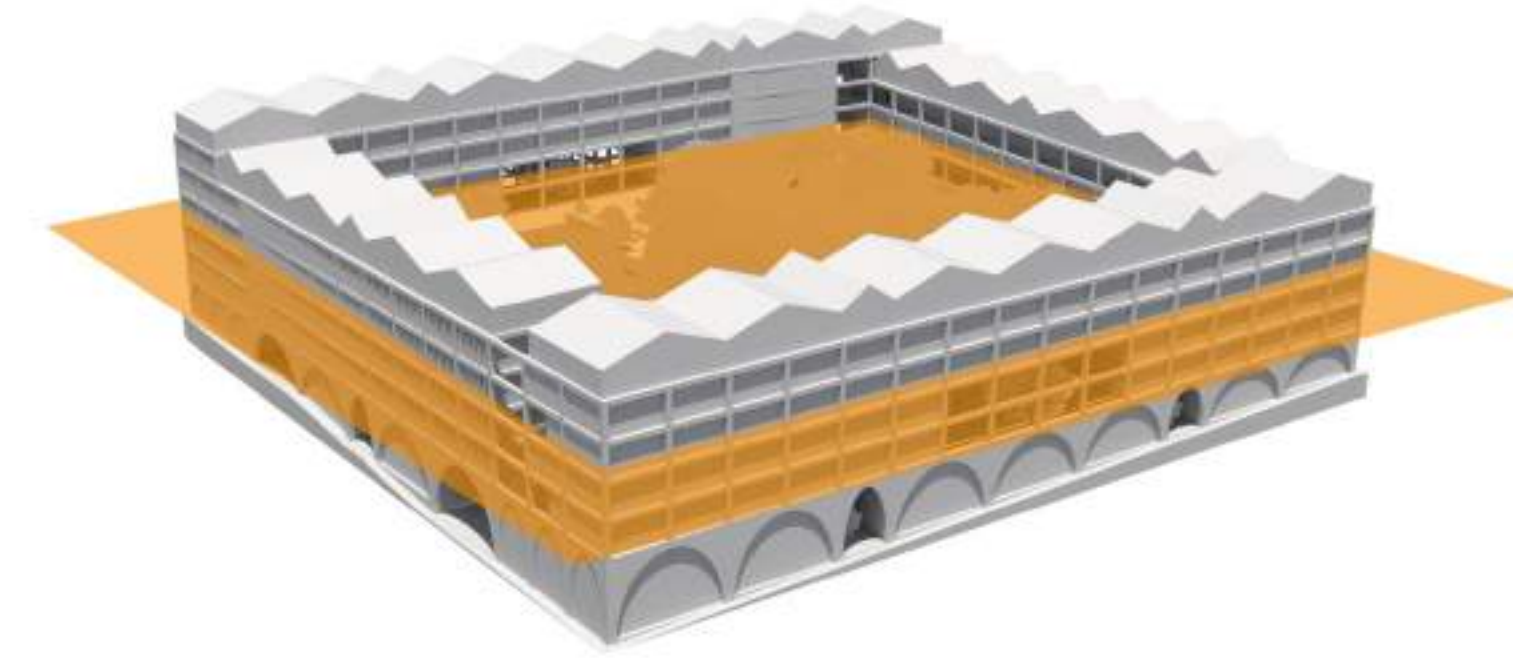
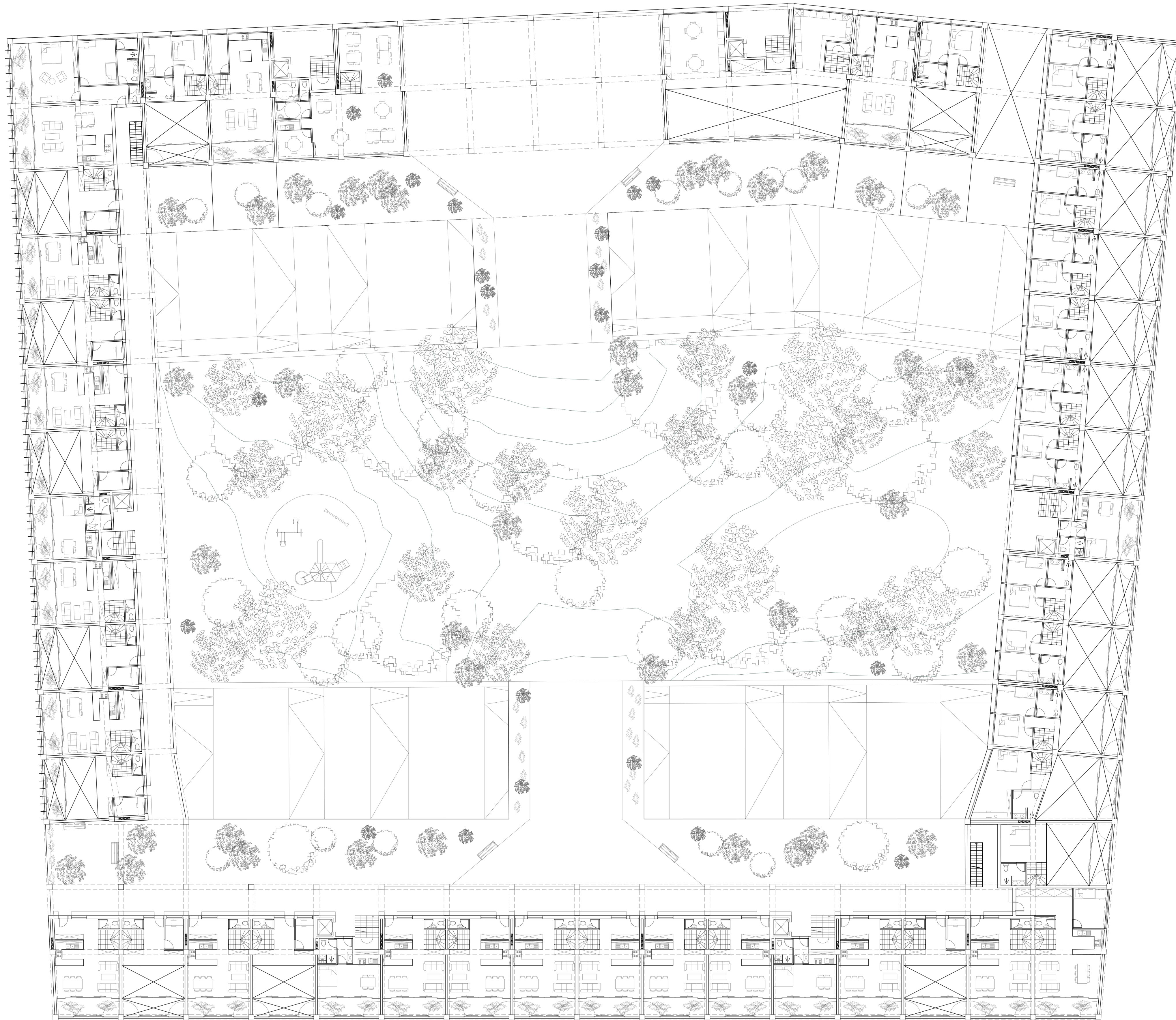
# Design : Ground Floor

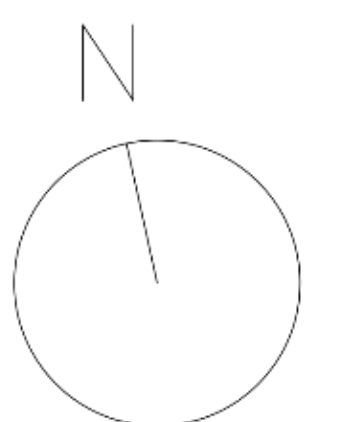
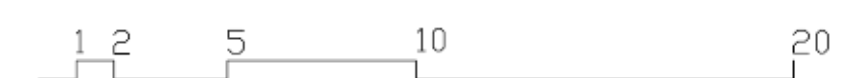
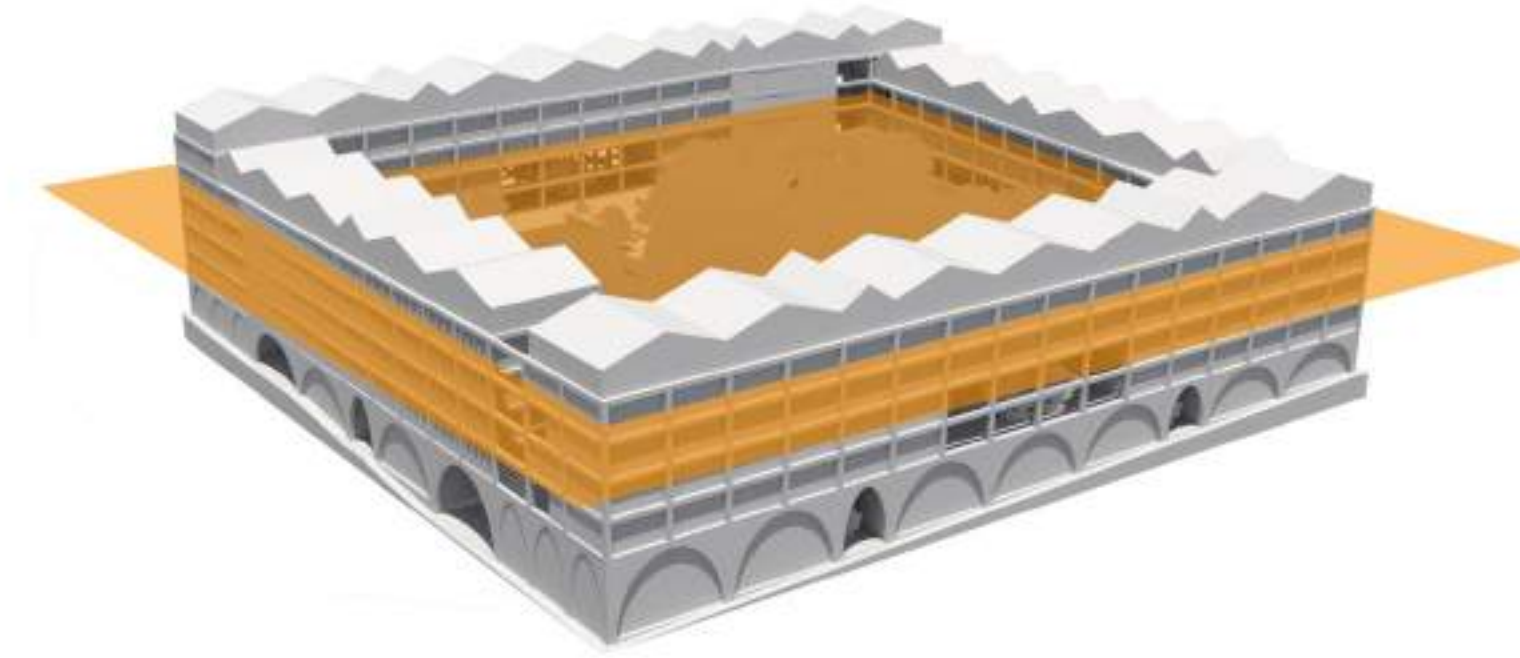
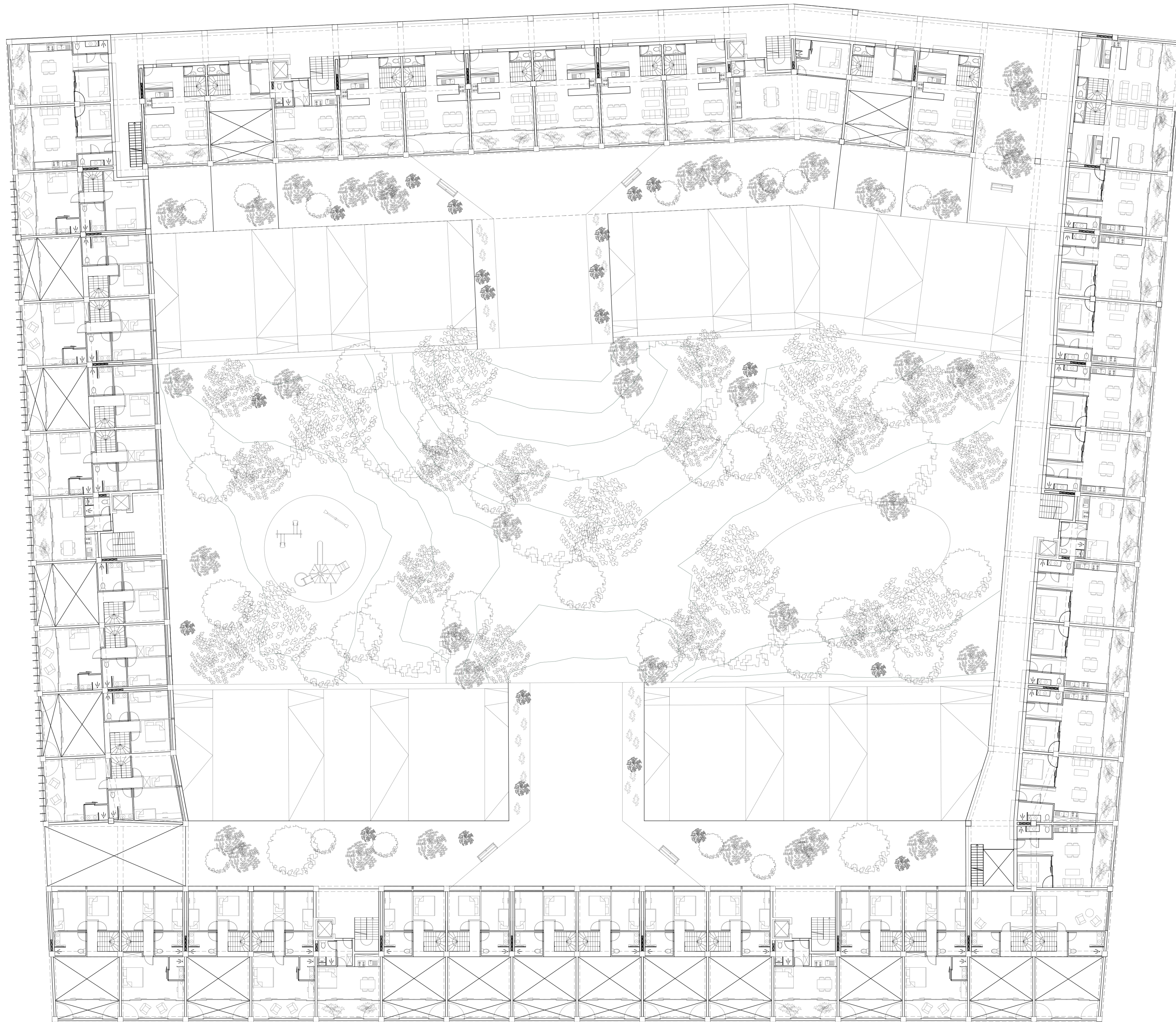
1:200

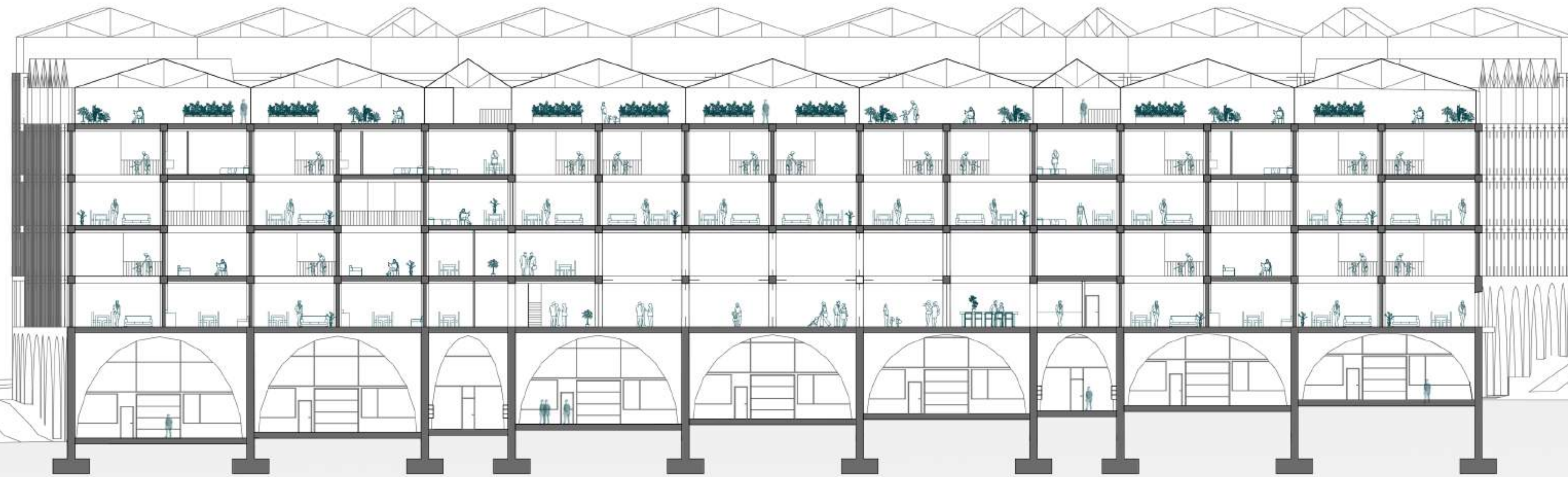
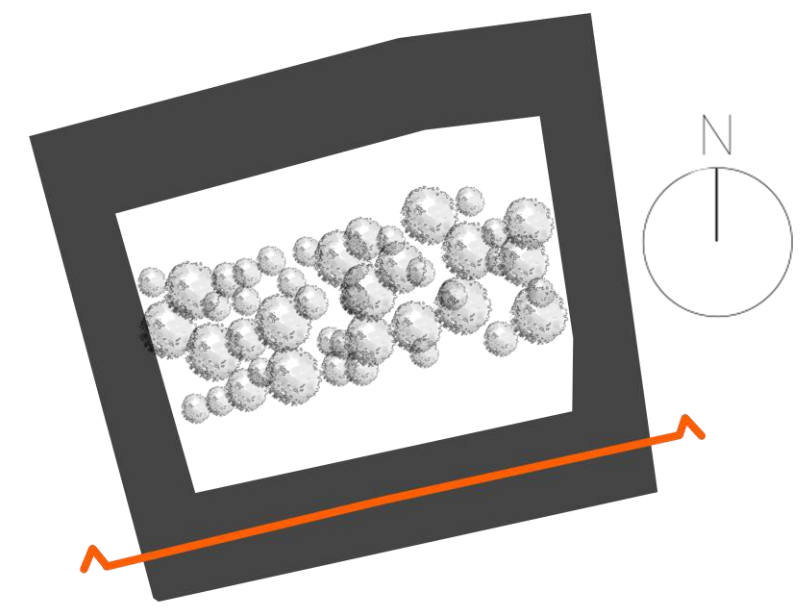
3



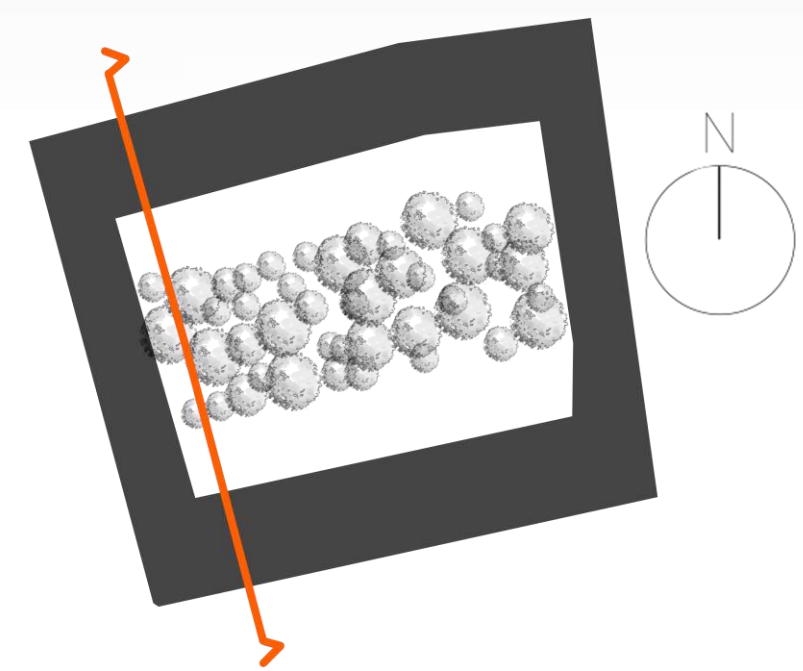






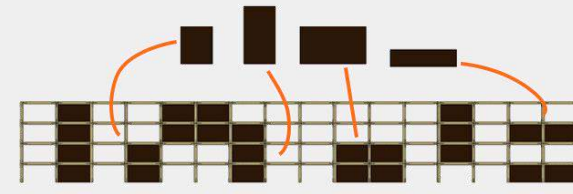


1 2 5 10 20

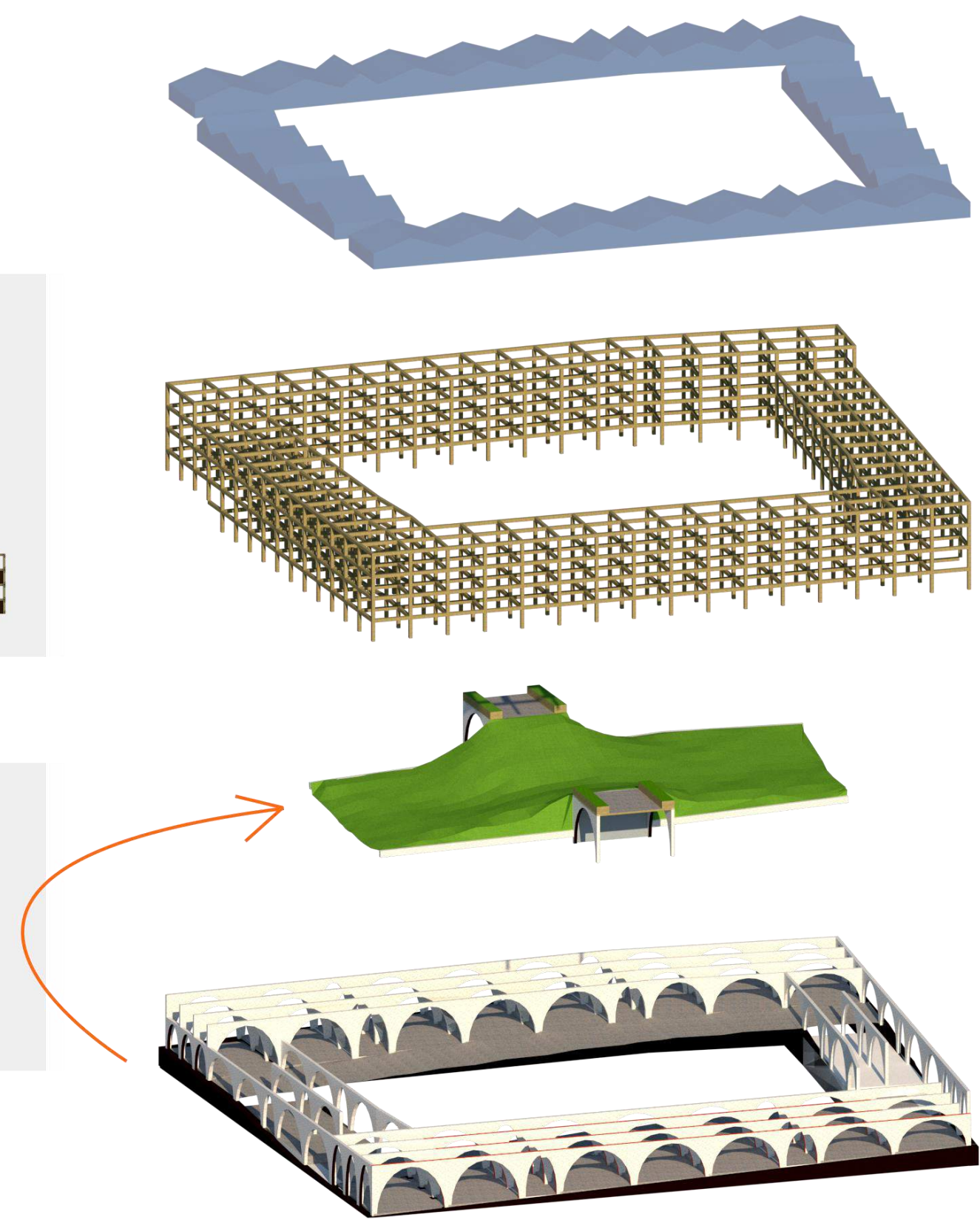


1 2 5 10 20

**Modularity**  
Can adapt change  
of new functions



Landscape earth  
from onsite  
excavations from  
the foundations  
= **Less wastes**



**Bolted steel & Glass**

**Wooden grid**  
(beams & columns)

**Brick arches**  
12m span for the ateliers



✔ Non-Composite materials  
= **Reusable** at end of life

