

Eleonora Rubinacci

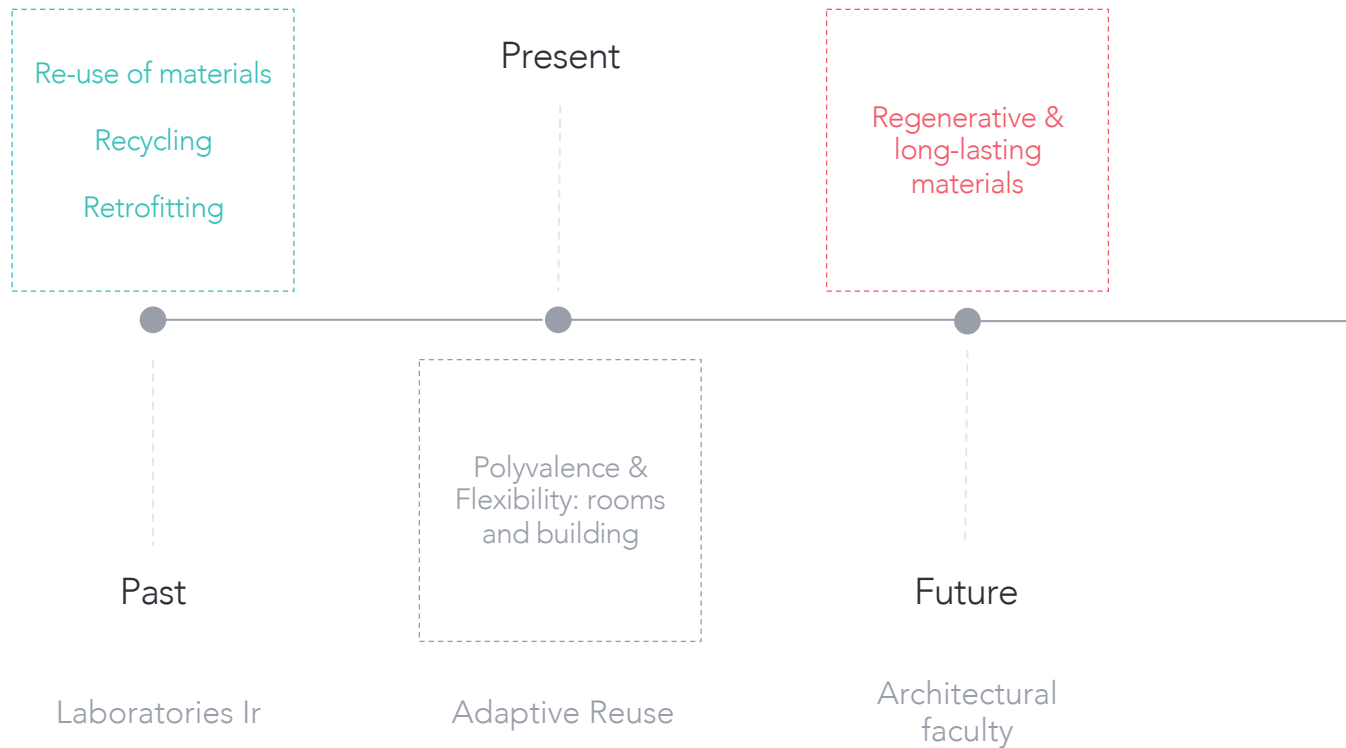
L building Final Jury

May 18<sup>th</sup>, 2021

Architectural Engineering Master 1  
Sustainable Architectural Design Studio

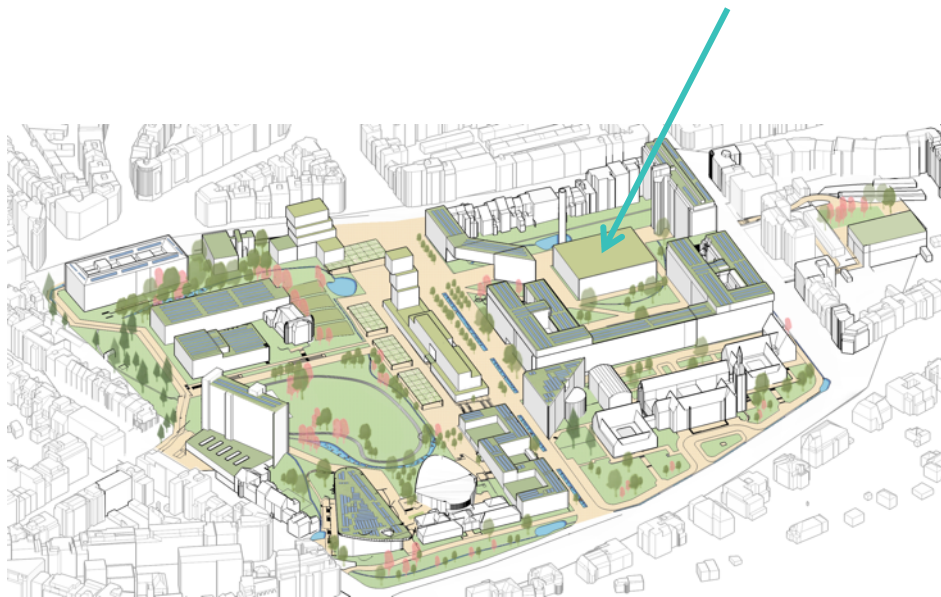


## Concept - Longevity



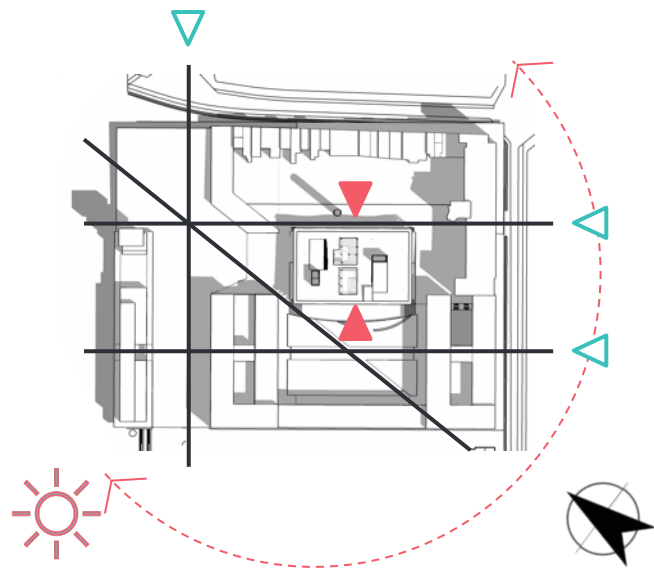


## Localisation



**Rebirth**

University as a regenerative organism



Campus entry



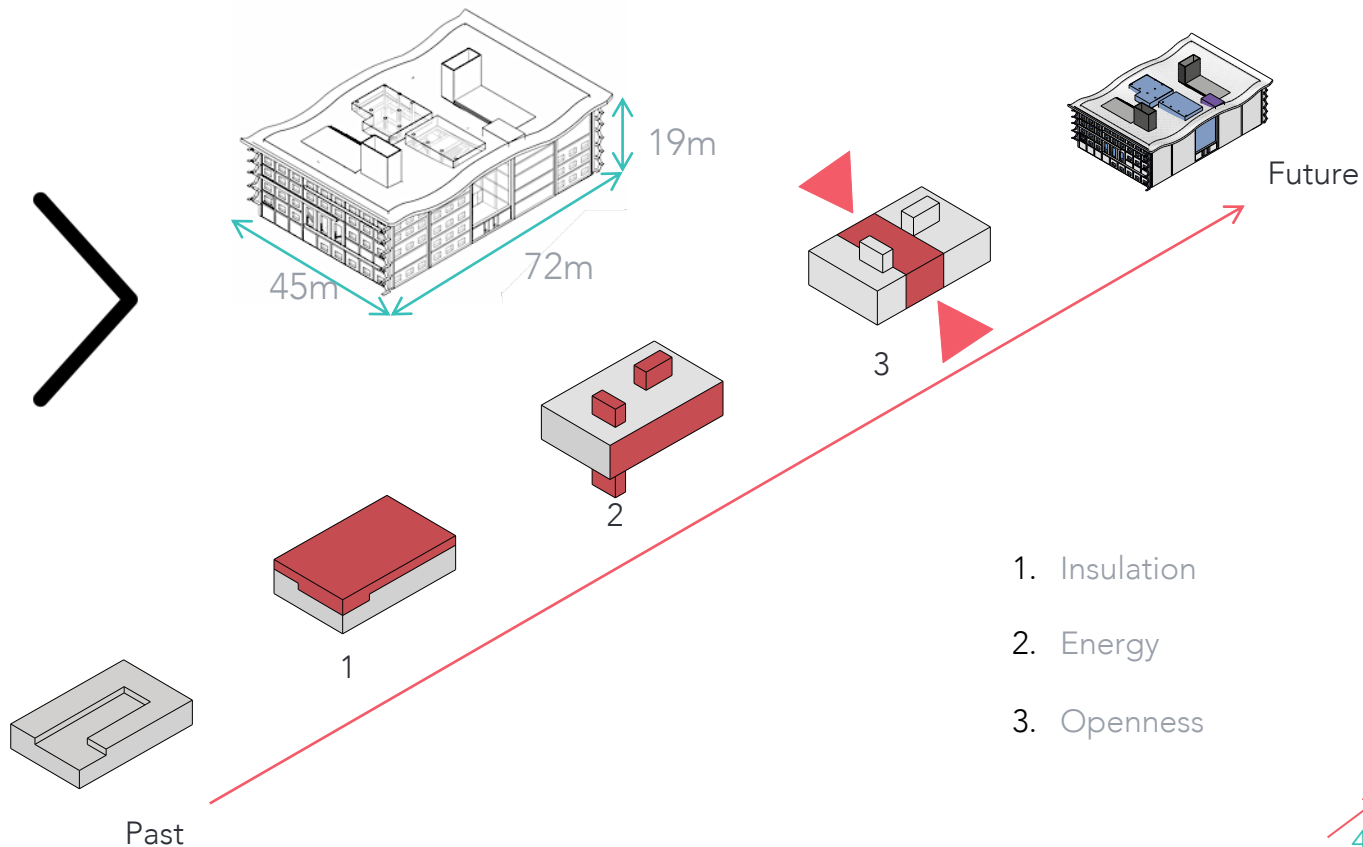
Building entry



Circulation axis

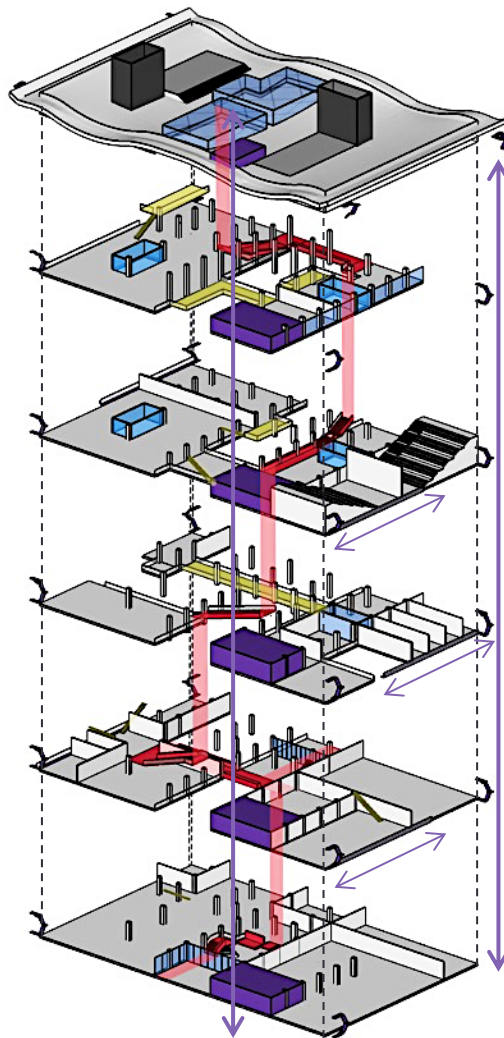
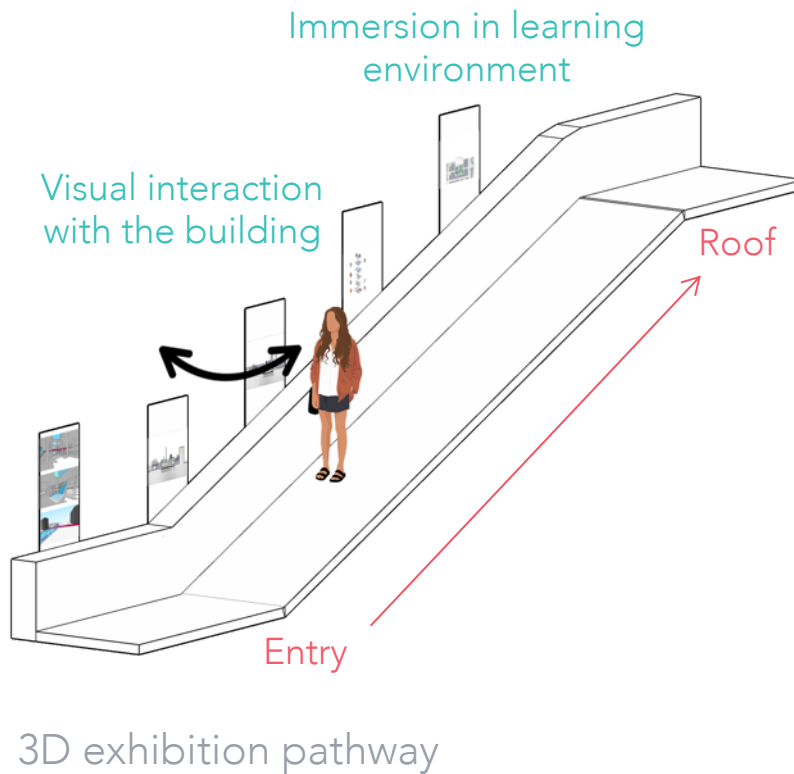


## Dimensions and volumetry





## Concept - Circulation



Principal circulation



Promenade architecturale

Secondary circulation



Tertiary circulation





## Concept - Reuse of the L building

	L0	L+1	L+2	L+3	Total	Amount of saved material
Floor's Volume [m <sup>3</sup> ]		650	220	390	1250	200 000 tiles
Wall's volume [m <sup>3</sup> ]	240	130	130	140	640	51 000 bricks



Kept floor



Kept opening



New floor

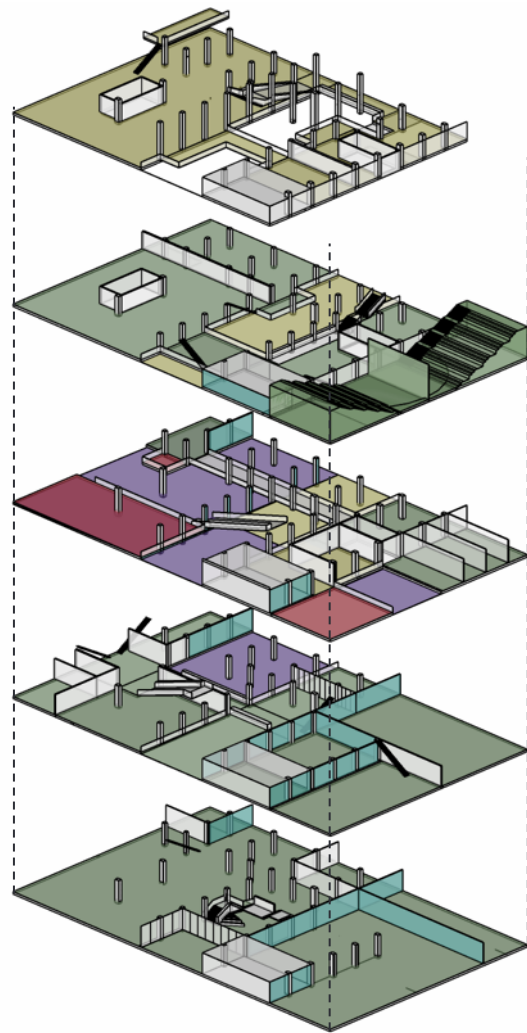


New opening



Kept wall

archiLink takes advantage of the L building to its maximum with limited modification of the interior walls and floors



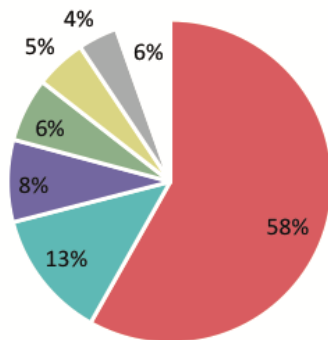


## Program

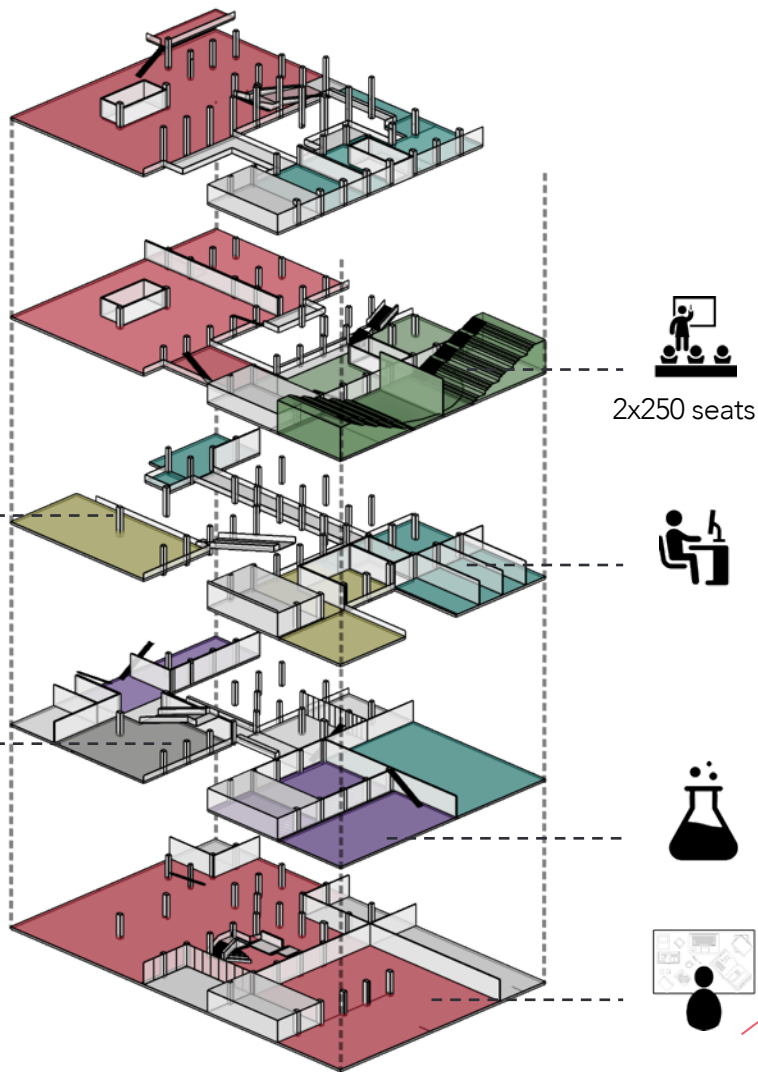
Faculty: 1365 people; 100 researchers

Localisation: Buildings U, L + 7 research units out of Campus

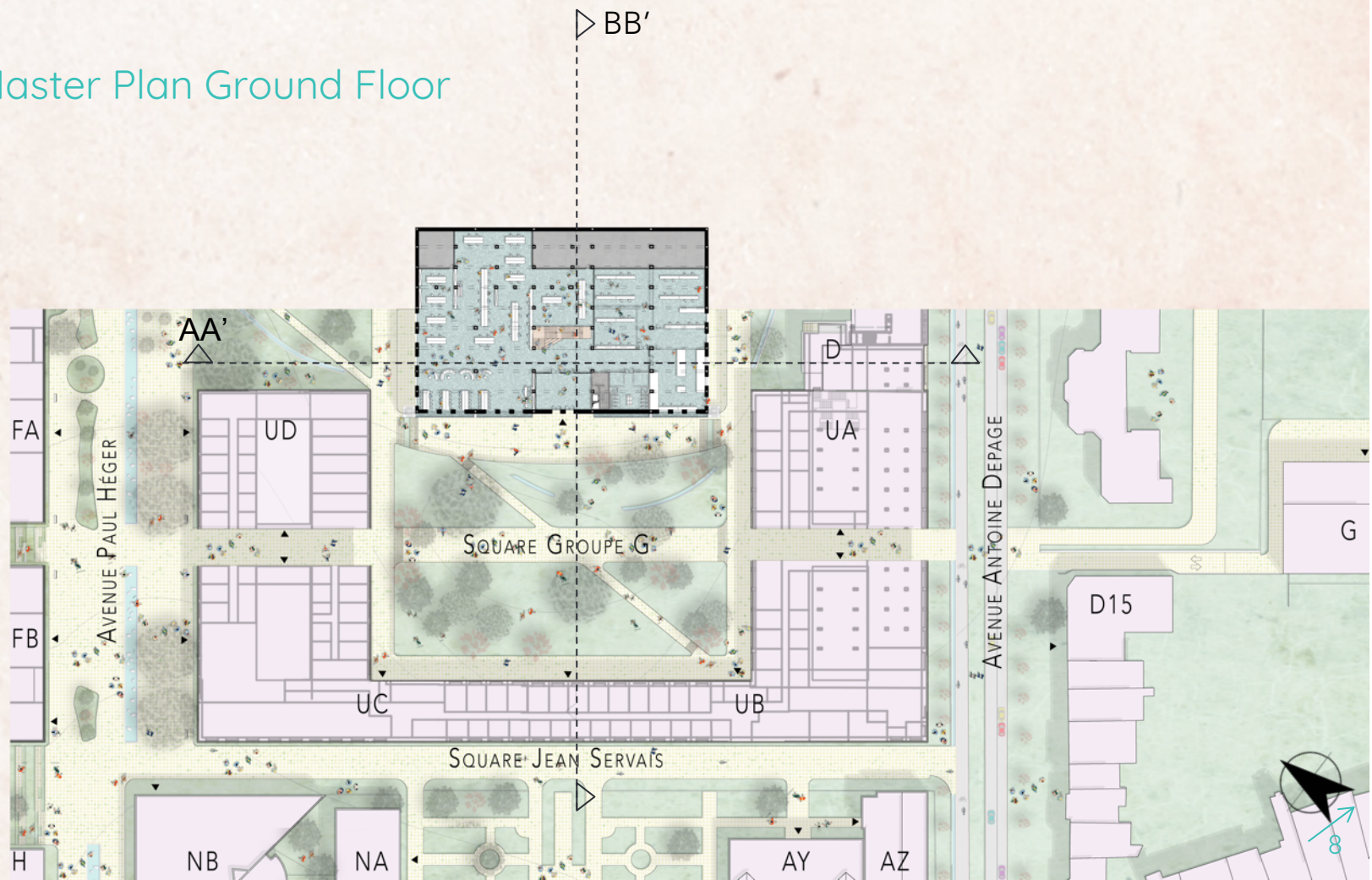
→ archiLink: 8<sup>th</sup> research unit



Program	% of building	Area [m²]
Studios	58%	5721
Profs. offices	13%	1261
Labs	8%	808
Auditoria	6%	627
PhD offices	5%	500
Copy shop	4%	388
Bioclimatic spaces	5%	532

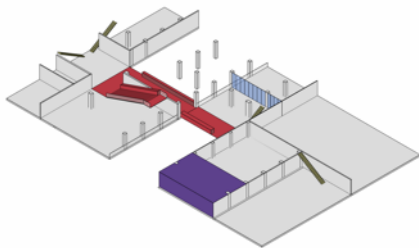
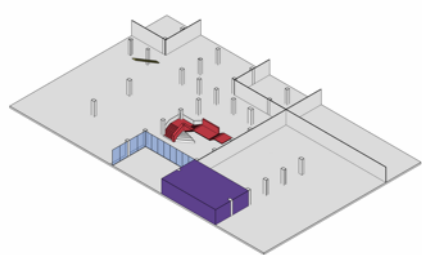
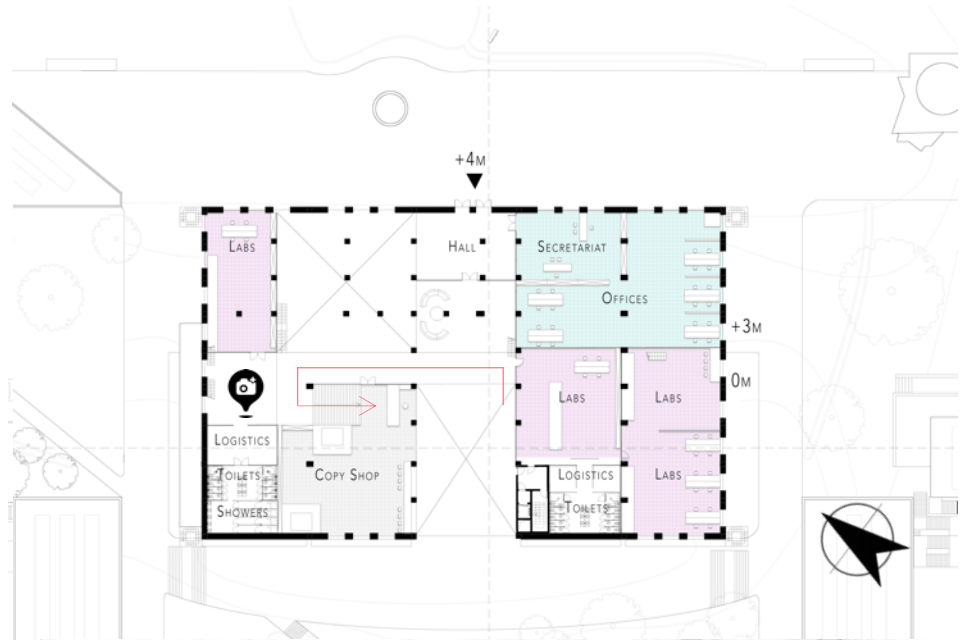
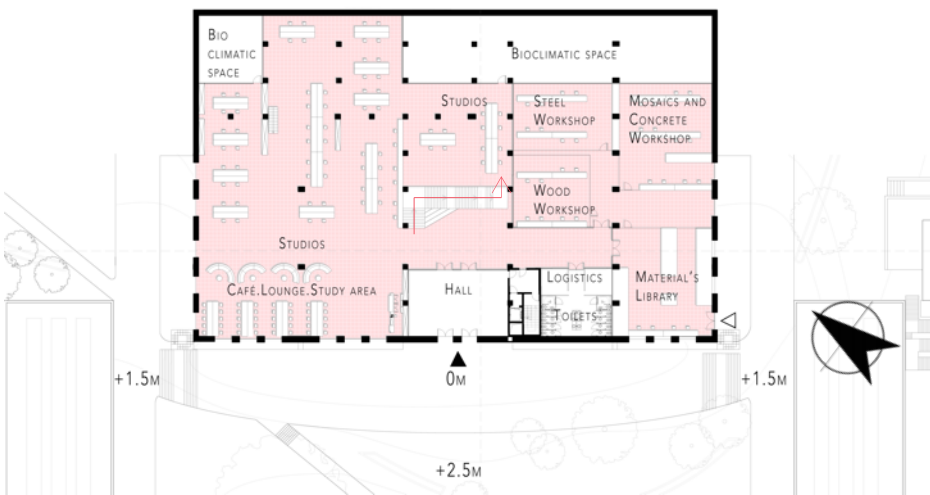


## Master Plan Ground Floor



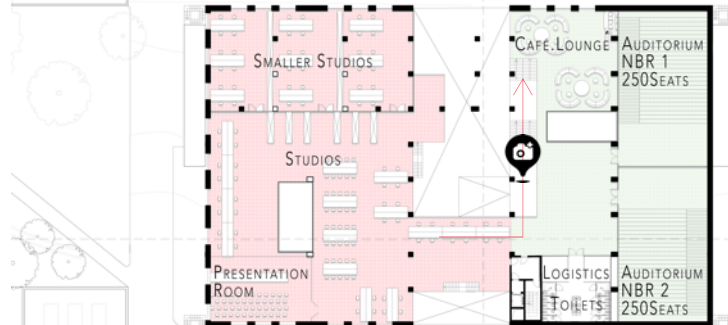
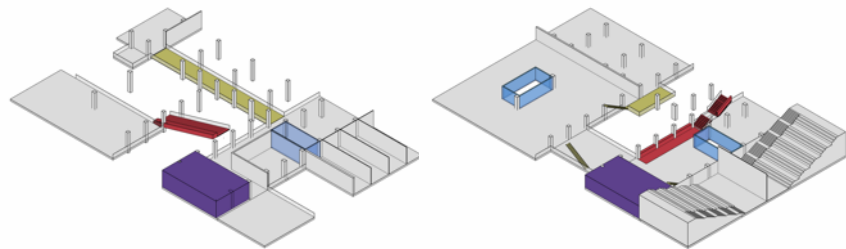
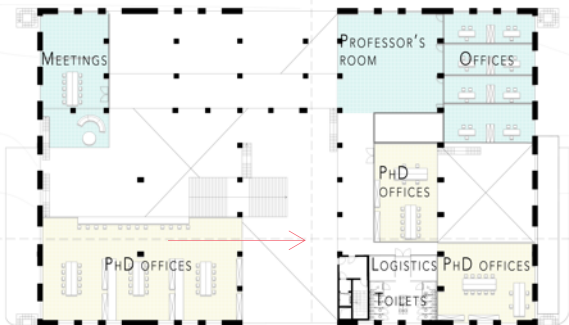


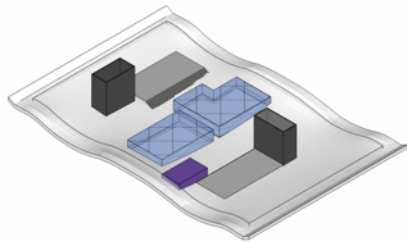
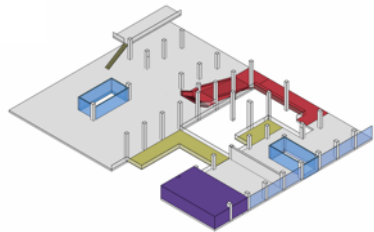
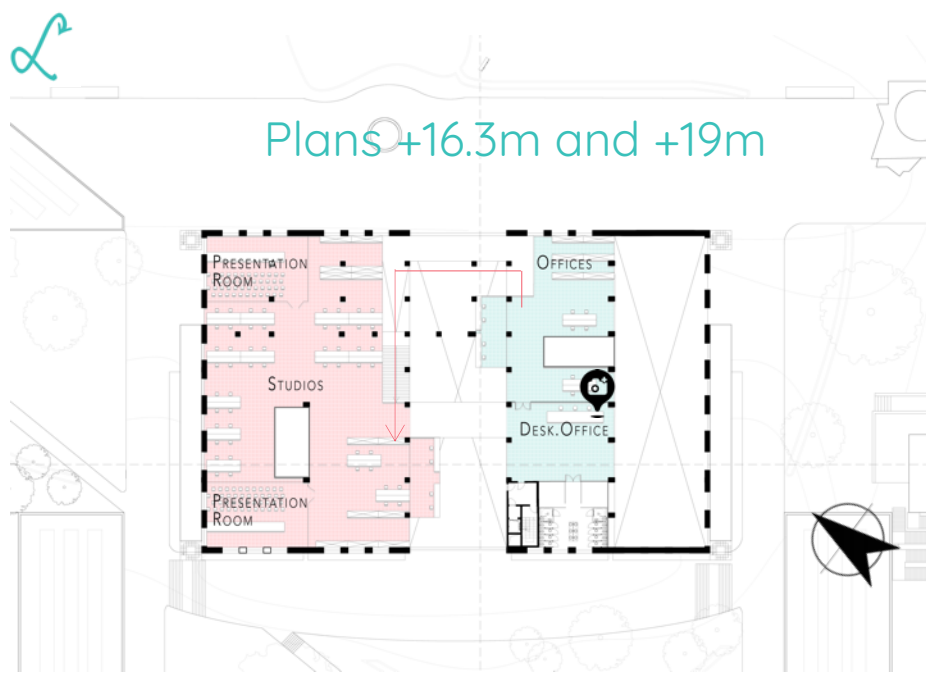
## Plans +0m and +4m





## Plans +8.4m and +12.9m





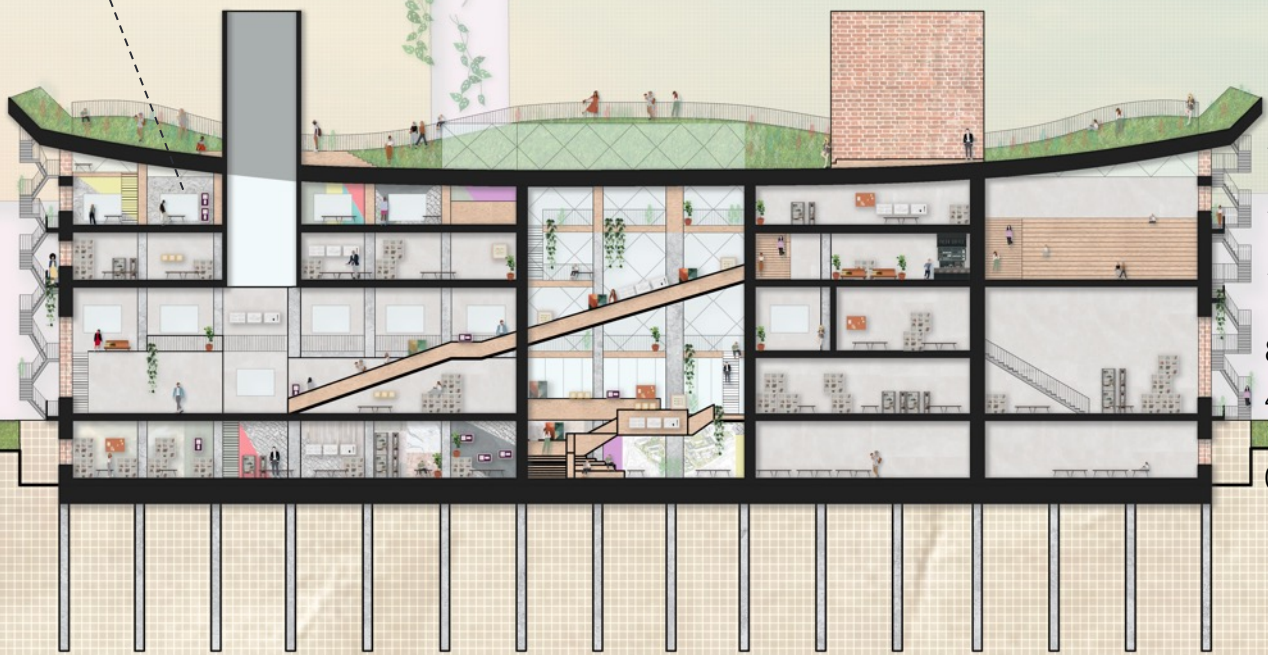
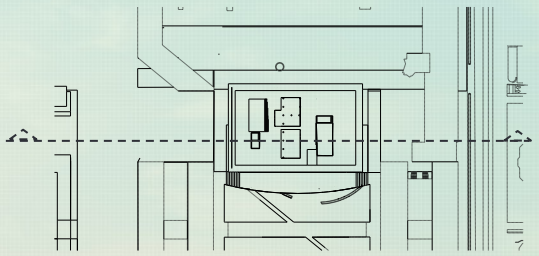
## Section AA'



Flexibility: walls as blank canvasses for students

Original  
New

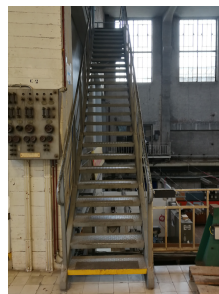
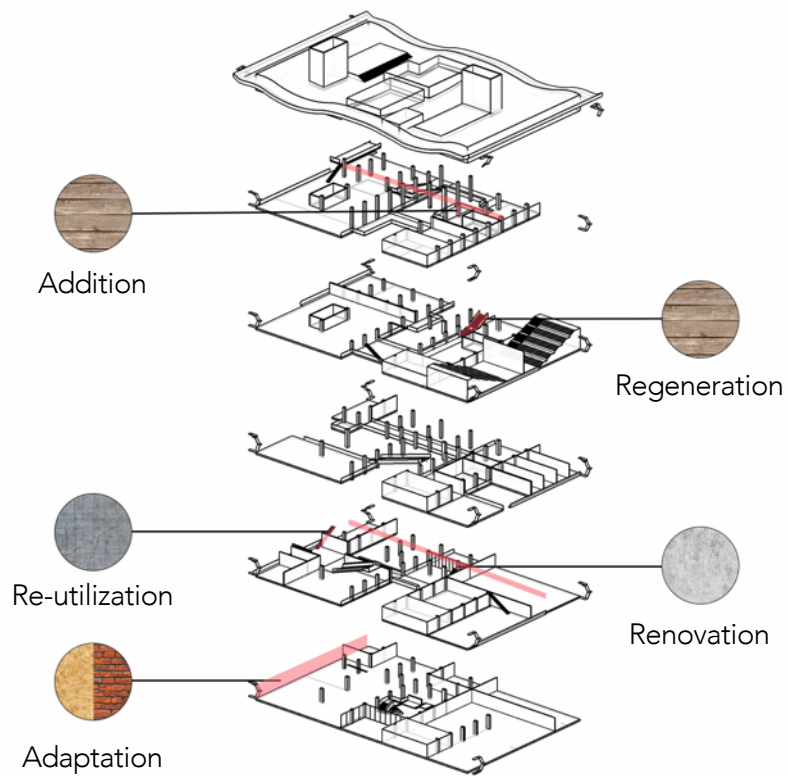
0.75m



19m  
16.3m  
12.9m  
8.4m  
4m  
1.5m  
0m



## Strategies - Materials



Steel staircases as so



Furniture as so



Doors are tables or countertops



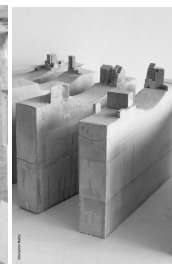
Brick walls as such



Stone and tiles for granita



Steel guardrails as so



Workshops:

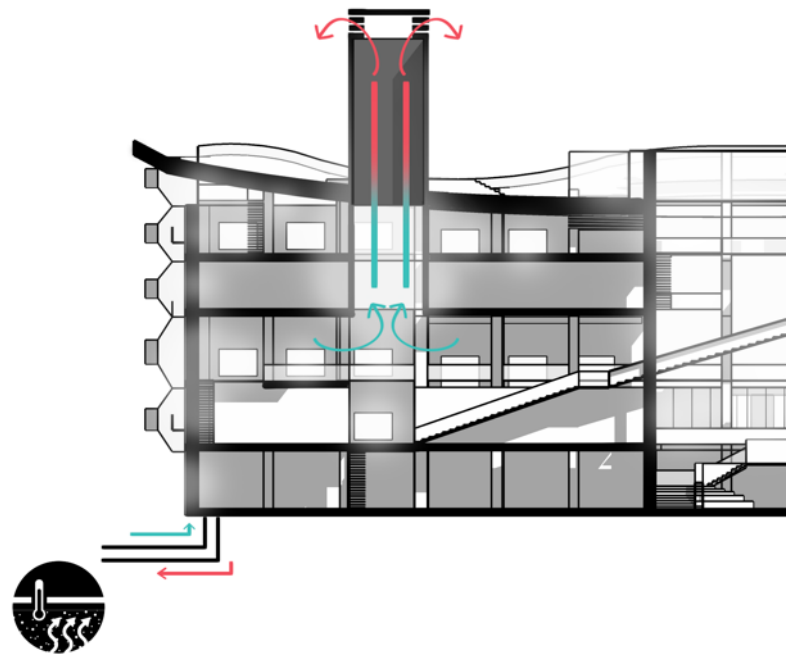
Steel  
Concrete  
Wood  
Granita/Mosaic

Goals: learn, experiment,  
understand, re-use

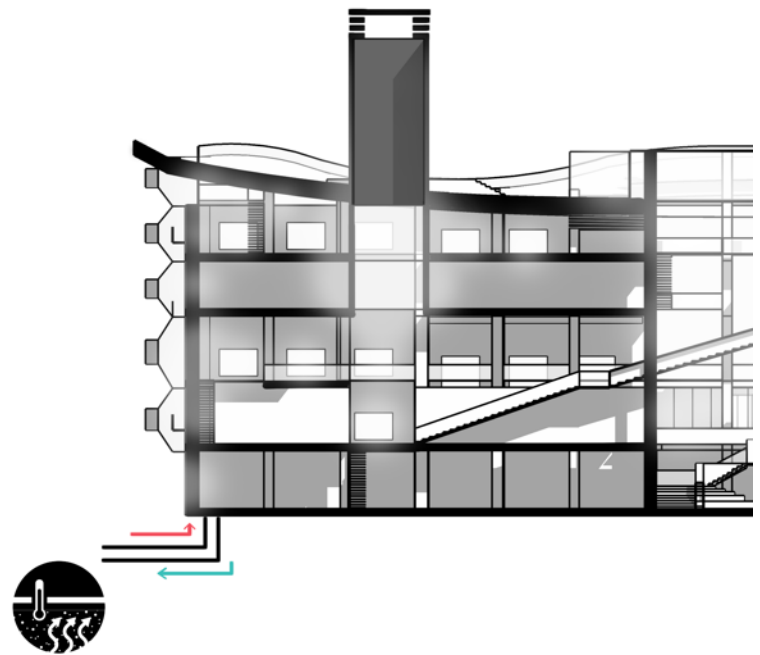


● Strategies – Solar chimneys and Geothermal energy

Hot air  
Cold air



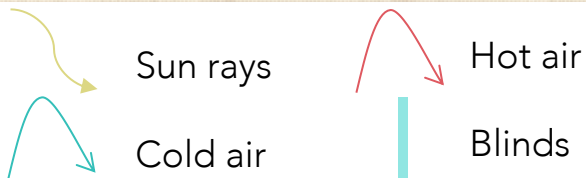
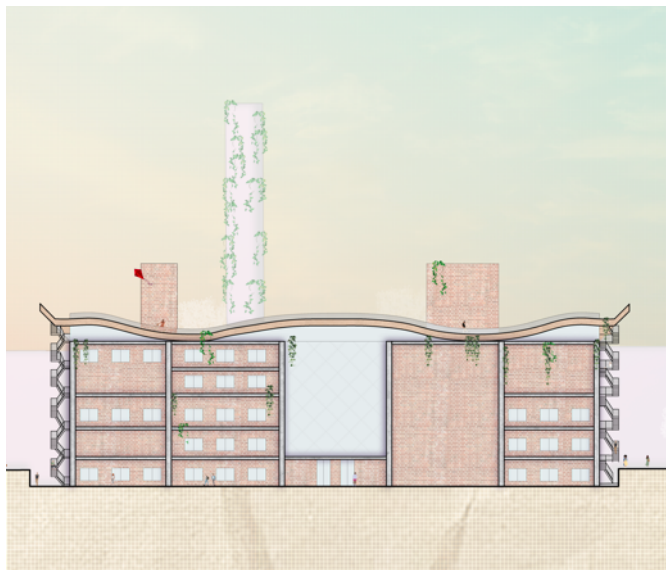
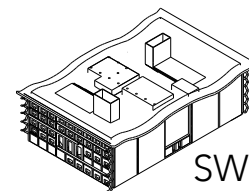
Summer and mid-season



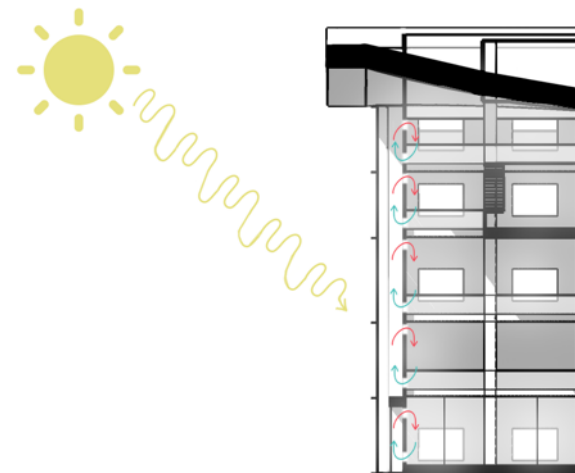
Winter



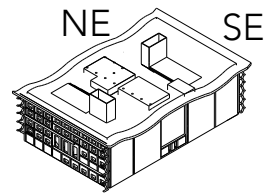
## Strategies – Trombe wall on the South-West façade



Summer





Winter and mid-season



## ● Strategies – Historical façades – SE and NE elevations



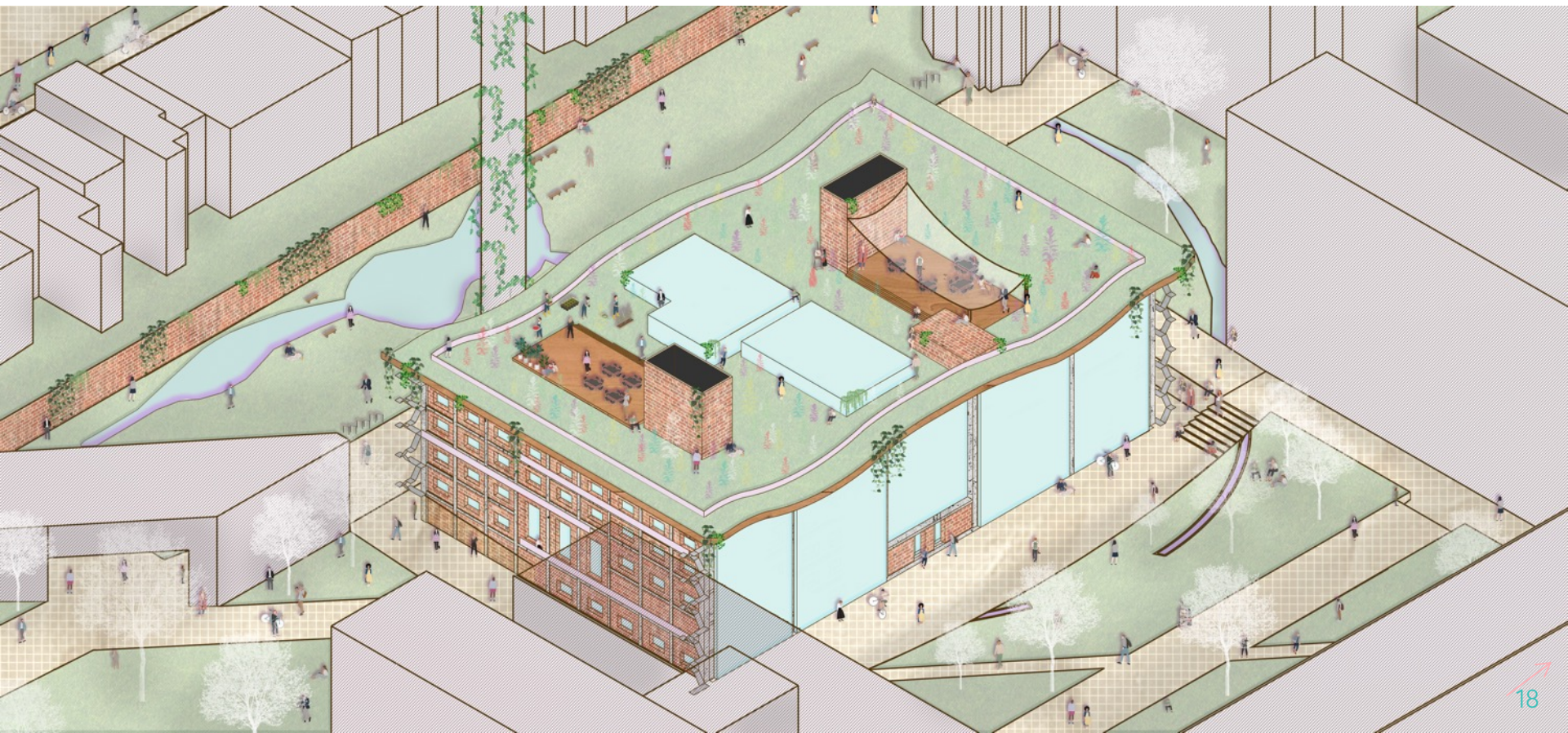
 2.4 x 1.7m; original size

 2.4 x 5.22m; original size

2 window modules



## Project overview



Thank you for  
your attention!

